

# C-Bus<sup>®</sup> Network Automation Controller

Commercial IP network controller for building automation in small, medium, and large buildings

[clipsal.com/C-BusTrade](https://clipsal.com/C-BusTrade)



Life Is On

**CLIPSAL**<sup>™</sup>  
by Schneider Electric



# Grow your business in building automation energy and maintenance management

Lighting and HVAC can account for over 70% of a building's energy consumption. Optimise this major energy draw by installing a powerful, integrated solution on open, scalable devices and applications: the C-Bus Network Automation Controller (5500NAC).

## +70%

of a building's energy is used for lighting and HVAC

The C-Bus Network Automation Controller is an advanced logic controller from Clipsal by Schneider Electric. It allows multiple standards and protocols for building automation and energy metering to be seamlessly and efficiently integrated.

Even more, it provides an outstanding, customisable user interface and a comprehensively distinguished solution that provides real differentiation and added value to you and to your customers.

### Flexible

Interoperable, connecting different building automation systems

### Customisable

User interface can be designed to customers' individual needs

### Efficient

Easy to install and repetitive configuration



Life Is On

**CLIPSAL**  
by Schneider Electric

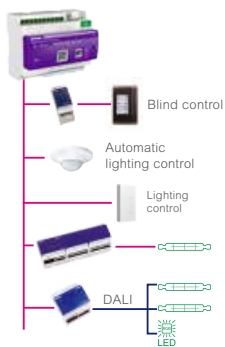


Life Is On

**CLIPSAL**  
by Schneider Electric

# One device, numerous options

The C-Bus Network Automation Controller provides the complete solution: unlimited flexibility, simplicity, and efficiency for you and your customers. It delivers in many ways.



## Gateway

As a gateway, it integrates easily with the central BMS, as well as multiple building control and management systems like lighting, blinds, heating and cooling.



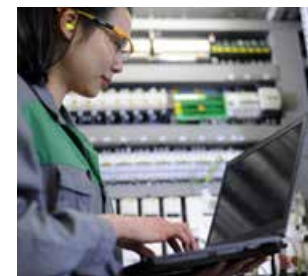
## User interface

As a user interface — based on a web server application — all functions can be controlled and be displayed on local and mobile devices such as tablets or smartphones.



## Memory functions

The automation controller displays gas, water and electricity measurements, and monitors consumption on daily, monthly, or yearly basis. It stores and analyses data, identifies potential energy-saving, increasing your building's energy efficiency.



## Logic controller

Advanced logic functions are possible in order to optimise energy efficiency and comfort.



## Event controller

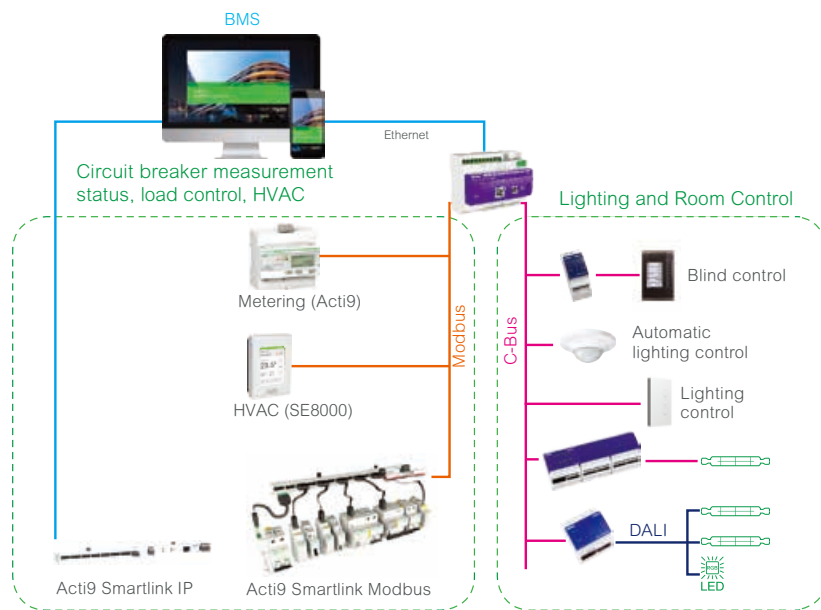
As an event controller, it enhances communications by sending notifications/messages in case of any system failure or issue.



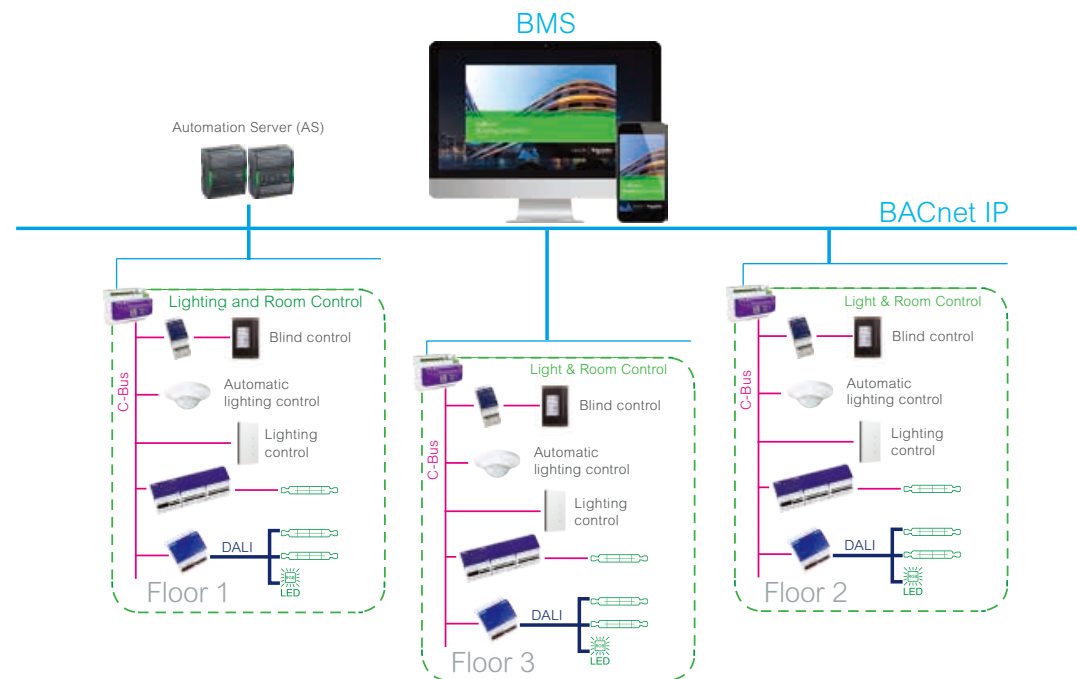
# Facilitate building solutions

Connect the C-Bus Network Automation Controller to your building control functions for a sophisticated small, medium, or large building management solution. Interoperable with different systems, our automation controller links lighting, shutter, and heating control systems to central BMS systems, such as EcoStruxure™ Building Management.

## Small and medium building systems



## Large building systems

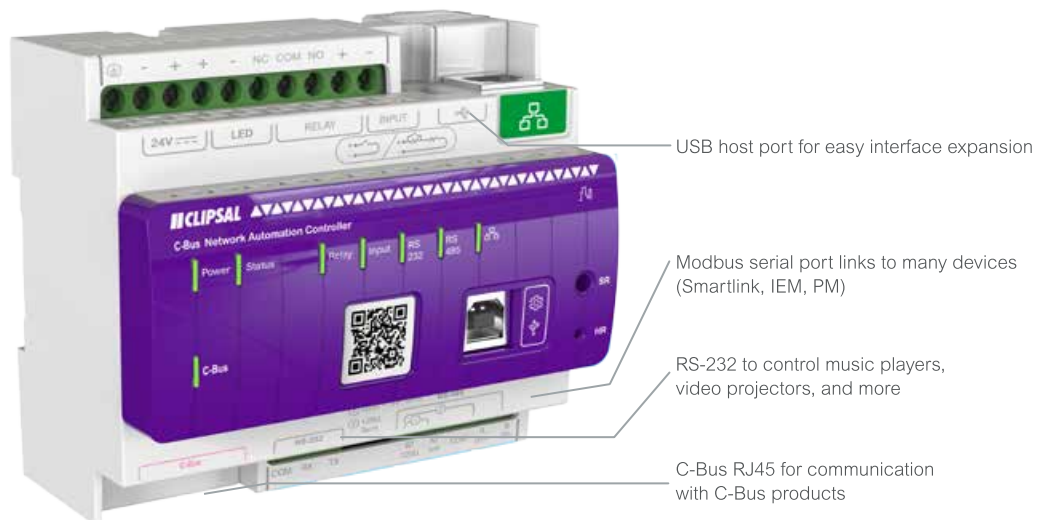


# Easy and efficient to install...

The C-Bus Network Automation Controller has a compact, ergonomic design and mounts easily within a C-Bus enclosure via standard DIN rail mountings. With simple connectivity to C-Bus via standard RJ45 sockets, and pre-programming possible while still in the box via the front facing USB connection, the automation controller delivers, saving time and money.

## Ready to communicate with multiple protocols

Ethernet connection for communication with BACnet IP server, Modbus, C-Bus and web services. It also grants access via the web server to configure and display the graphical user interface.







## ... and easy to adapt and configure

Depending on your needs and required functions, configuration is fast and simple. These configurations are easily scaled and used across similar projects.

### Basic mode: easy configuration

**Create and process multi-level visualisations** in a few quick steps by simply uploading a background image file and adding objects.

**Choose from a selection of icons and templates** for all control devices — or easily create your own library with one-click import.

**Create schedules simply**, integrated in a page or displayed in the schedule view. Provides easy use and modification by users.

**Create scenes easily** for all controlled objects, providing simple control over hundreds of devices in a single action or event.

**Create trend logs easily**, either integrated in a page or directly displayed in the trends view.

**Integrate a BACnet point** in a few clicks.

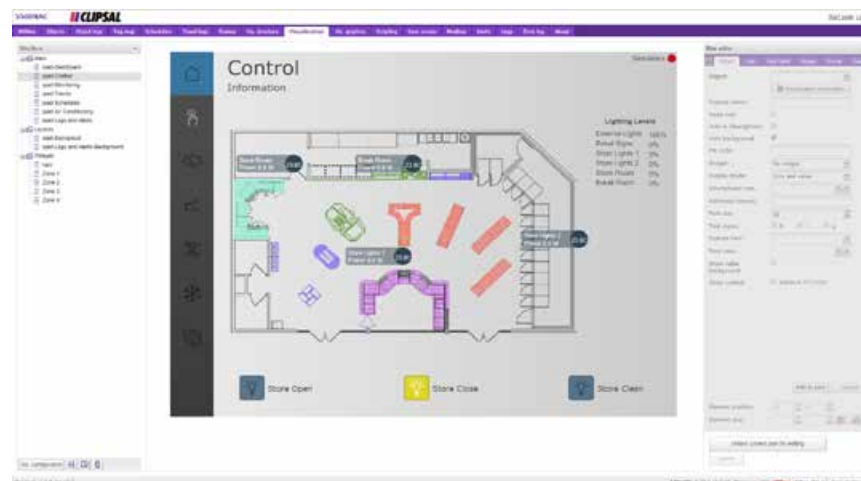
### Complete functions in advanced mode

**Execute event-based scripts** when a group event occurs on the Bus, common when near real-time response is required.

**Run scheduled scripts** at the required time and day, often used for various BMS functions and multi-system control.

**Use resident function scripts** to poll and check for object state changes, usually used for heating and ventilation when data is gathered from more than one group address.

**Scripting repository and built-in helpers** feature built-in code snippets, making script creation significantly easier. All customers gain access to the scripting repository with examples and tutorials for all common scenarios.



Life Is On

**CLIPSAL**  
by Schneider Electric

# One interface — all functions

Clear, structured views of all functions, scenes, settings, and values—in a single interface, with interactive floor plans for intuitive orientation and convenient operation.

## Convenient local or mobile control

The automation controller interface can be displayed on all devices, local or mobile. Optimised for each device, the interface design ensures quick handling – easier than ever.



## 100% interface customisation

The automation controller interface can be fully customised, enabling end-users to create their own designs or company branding.



End users and maintenance managers need an easy and quick solution to manage and maintain buildings. The automation controller offers not only an up-to-date system, but also a tailor-made interface. Plus, in advanced configuration mode you can create the customised interface design. Easily change the entire layout, or replace single elements like the logo or an icon.

# Maintenance and management at your fingertips

The C-Bus Network Automation Controller gives you the keys to maintain and control all building functions, from anywhere, via a single interface.

The web-based interface allows building functions to be monitored and controlled via laptop, tablet, or smartphone. All functions can be tracked from everywhere, whether the maintenance manager is onsite or not.

All settings, whether on floors or in single rooms, can be intuitively controlled and adapted thanks to plain icons.

## Metering at a glance

Current water, gas and electricity consumption can be checked and date-recorded on daily, monthly or yearly schedules. Historical comparison charts help identify saving potential as well as highlight abnormal consumption patterns.



## Maintenance information

Display all maintenance information (e.g. status or lifetime of lamps). Alarms highlight malfunctions, like broken lamps, for the maintenance manager's attention. It makes it easy and time-saving to plan as well as to schedule maintenance work when and where necessary.

## Schedules

Schedules for every building function can be set thanks to the integrated time scheduler/calendar function.

Life Is On



Schneider Electric (Australia) Pty. Ltd.

33-37 Port Wakefield Road, Gepps Cross, South Australia, 5094  
PO Box 132, Enfield Plaza, South Australia, 5085

[clipsal.com](http://clipsal.com)

Consumer Support Enquiries

Phone: 1300 669 925

Website: [clipsal.com/contactus](http://clipsal.com/contactus)

National Customer Care (trade only)

Phone: 1300 369 233

Email: [plugin@clipsal.com.au](mailto:plugin@clipsal.com.au)

August 2017

©2017 Schneider Electric. All Rights Reserved.

Schneider Electric | Life Is On is a trademark and the property of Schneider Electric SE, its subsidiaries, and affiliated companies.

This document has been printed on recycled paper.

998-20069370\_AU-GB