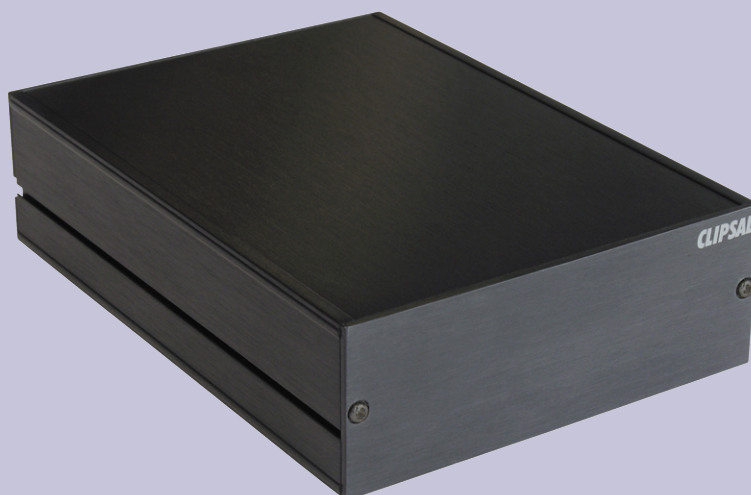


## C-Bus Multi Room Audio 10-Watt Remote Amplifier



### 10-Watt Remote Amplifier 560110R

The C-Bus Multi-Room Audio (MRA) system 10-Watt Remote Amplifier can be used in a stand-alone single zone installation or as part of a complete audio distribution system. Regardless of the installation type, the amplifier provides a robust unit capable of operating at temperatures as high as 70° C (158° F).

When the amplifier is used in a stand-alone configuration and installed in ceiling spaces close to speaker locations, high temperature power supply (Cat. # 5600P24H375A) should be used. Under normal operating temperature conditions, the standard power supply (Cat. # 5600P24/1250) can be used. The optional in-ceiling mounting bracket, (Cat. # 560110MB) can be used to fix the amplifier to a beam to maximise airflow around the unit.

When used in a single-zone configuration, the amplifier offers a C-Bus installation the ability to have a single zone of music if a complete multi-zone system is not required. The unit is powered from 24 V d.c. and has a line-level input that can be connected permanently to an audio visual device such as a personal MP3 player. Control is typically through a C-Bus wall switch, DLT switch or touchscreen or by Wiser Home Control where the amplifier's volume, base and treble can be adjusted. The C-Bus connection to the amplifier is through a removable screwed connector located on the rear of the unit.

The stand-alone amplifier configuration can be expanded to have two input sources by using the Audio Distribution Unit (Cat. # 560011) to take a second line-level connection.

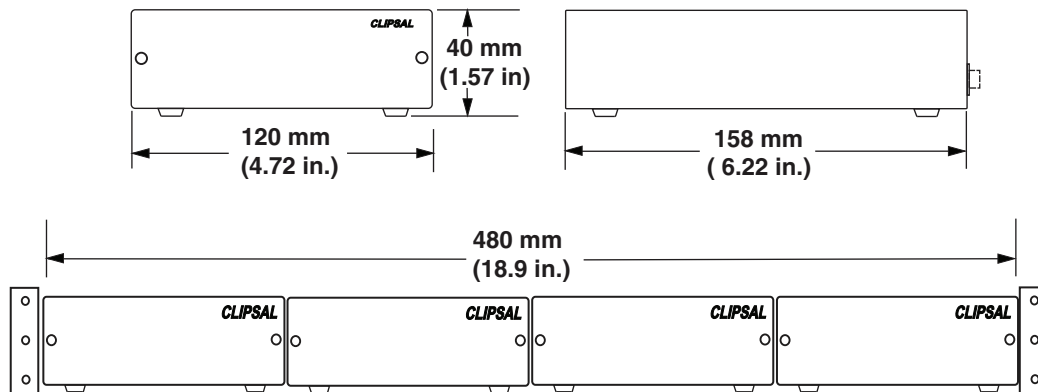
When used with a matrix switcher as part of a whole home system, the amplifier can be installed along with the home entertainment equipment or remotely in the field. Power for the amplifier can be supplied from the matrix switcher along with digital signals on a Cat.5e cable. This cable can be run up to 45 metres.

If multiple 10-Watt remote amplifiers are to be installed together in an equipment rack, up to four amplifiers can be joined together to fit perfectly in a standard 19-inch rack width. If fewer than four amplifiers are to be installed in the rack, blank enclosure boxes (Cat. # 560100E) are available to fill the 19-inch rack width. The black anodised aluminium finish matches perfectly with the matrix switcher and typical A/V equipment. All connection terminals are removable and are unique to the unit to prevent misconnection.

Multiple amplifiers can also be connected together on the same zone using the bypass tee (Cat. # 5600TEE) so that individual volume control over several sets of speakers can be achieved. This typical setup may be used in a bedroom/ensuite environment where the program to be listened to is the same, but separate volume control is desired.

The 10-Watt remote amplifier supports MRA reticulation of infrared signals. By connecting one of the available infrared targets to the amplifier, remote control signals can be directed from the zone back to control the A/V equipment through the matrix switcher or Audio Distribution Unit.

# C-Bus® Multi Room Audio 10-Watt Remote Amplifier 560110R



A combination of 560110R amplifiers and 560100E enclosure only units can be joined together for installation in a standard 19-inch equipment rack tray.

## Electrical Specifications

Parameter	Description	Parameter	Description
Description	10-Watt remote amplifier	Analogue input signal level (local input)	2.8 V p-p maximum (47 k ohms)
Catalogue number	560110R	D/A conversion	16-bit PCM
Supply voltage	24 V d.c. @ 1.25 A when using external power supply 27 V d.c. when powered by the Matrix Switcher via the digital audio connection	Network clock and burden	software selectable
Power consumption	30 W maximum	C-Bus supply voltage	15 to 36 V d.c.
Maximum power output	10 W RMS per channel into 6 ohms (0.514% THD)	C-Bus sink current	22 mA
Impedance	6-8 ohms	Connections	Speakers: screw terminal block C-Bus: screw terminal block Analogue audio input: 3.5 mm stereo socket Digital audio input: RJ-45 socket IR target: screw terminal block Power: 5.5 mm barrel connector socket
Frequency response	40 Hz to 20 kHz (+/- 1 dB)	Includes	Amplifier ganging plate for joining multiple amplifiers Installation Instructions
Total harmonic distortion	0.36% (using analogue input) 1 kHz, 20 W RMS into 4 ohms	Operating temperature	0 to 70° C (32 to 158° F)
Signal to noise ratio	>67 dB (peak, unrated)	Operating Humidity	10 to 90% RH, non-condensing

### Clipsal Australia Pty. Ltd.

a member of Schneider Electric

Head Office  
33-37 Port Wakefield Road,  
Gepps Cross, South Australia 5094  
Internet: <http://clipsal.com/cis/>  
E-mail: [cis.support@clipsal.com.au](mailto:cis.support@clipsal.com.au)

CIS Technical Support Hotline:  
Australia 1 300 722 247  
New Zealand 0 800 888 219

National Customer Care Enquiries:  
1 300 202 525 facsimile: 1 300 202 556

International Sales and Marketing  
E-mail: [export@clipsal.com.au](mailto:export@clipsal.com.au)

### New Zealand

Schneider Electric (NZ) Ltd  
Telephone +64 9 576 3403

### Malaysia

Clipsal Integrated Systems (M) Sdn Bhd  
Telephone +60 3 7665 3555

### Singapore

Clipsal Singapore Pte Ltd  
Telephone +65 6415 3211  
Telephone +65 6415 3232

### China

Clipsal China Limited  
Telephone +86 755 8237 5959

### Greece

Schneider Electric AE  
Telephone +30 69 4646 3200

### Hong Kong

Clipsal Integrated Systems (HK) Limited  
Telephone +852 2487 0261

### India

Schneider Electric India Pvt Ltd  
Telephone +91 11 5159 0000

### Indonesia

PT Clipsal Graha Nusa  
Telephone +62 21 630 6430

### Korea

Clipsal Korea Co. Ltd  
Telephone +822 549 5550

### Pakistan

Clipsal Pakistan (Pvt) Ltd  
Telephone +92 21 506 7278

### Philippines

Clipsal Philippines Inc.  
Telephone +632 683 0275-78

### South Africa

Clipsal South Africa (Pty) Ltd  
Telephone +27 11 314 5200

### Taiwan

Schneider Electric Taiwan  
Telephone +886 2 8751 6388

### Thailand

Clipsal Thailand Ltd  
Telephone +66 2 952 5338  
Telephone +66 2 952 5342

### United Arab Emirates

Clipsal Middle East  
Telephone +971 6 5570 777

### United Kingdom

Clipsal Integrated Systems  
c/o Schneider Electric  
Telephone +44 870 608 8 608

### Vietnam

Clipsal - VTEC  
Telephone +848 856 3002

[clipsal.com/cis](http://clipsal.com/cis)

The information in this data sheet is provided in good faith. Schneider Electric has endeavoured to ensure the relevance and accuracy of the information. It assumes no responsibility for any loss incurred as a result of its use.

Specifications are subject to change without notice.

Clipsal and C-Bus are trademarks of Schneider Electric.