



RCM™ CURTAIN TRACK

→ INTRODUCTION

› To answer the growing demand for an affordable motorised tracking system for commercial and residential curtains, **REFLEX™ SHADING SYSTEMS** has developed the **RCM™ 35** and **RCM™ 50** 240 volt motors and track components to offer the very best solution to this demand.

The versatility of this system is almost limitless in applications from small residential lightweight sheer curtains to home theatre and stage curtain systems.

The track can be formed to tight radii bends and is curvable to suit almost any configuration. For very large applications dual motors can be utilised giving up to 100 watts of pulling power to open and close the largest of curtains. The system incorporates the simplest of installation techniques and the motors are extremely reliable. The travel of curtains along the track is limited by a pair of micro switches within the **REFLEX™** motors, with infinite adjustability with the simplest of equipment. The **REFLEX™ RCM™ CURTAIN TRACK SYSTEM** is the simplest and most affordable tracking system available.

Combined with the vast range of **REFLEX™** control systems from simple wall switches to remote controls, bus line systems and computer interfacing, The **REFLEX™ RCM™ SYSTEM** is the answer to your curtain automation demands.

APPLICATION

› The application will determine the configuration of the motor(s) and direction of draw of the curtain. The draw configuration can be from right to left, left to right, draw to the centre or from the centre to the ends. Drawing of more than one curtain in the same direction on the same track can be achieved as well. For heavy applications such as long drop curtains with curved tracks, the addition of a second or slave motor will double the power to give smooth trouble free motion.

The arrangement of carriers and lead plate cater for most types of curtain tapes and headings and due to the very narrow profile of the track the curtain can be fitted below or in front of the track (below is recommended). Attach points are supplied for the fixed ends of the curtain where necessary.

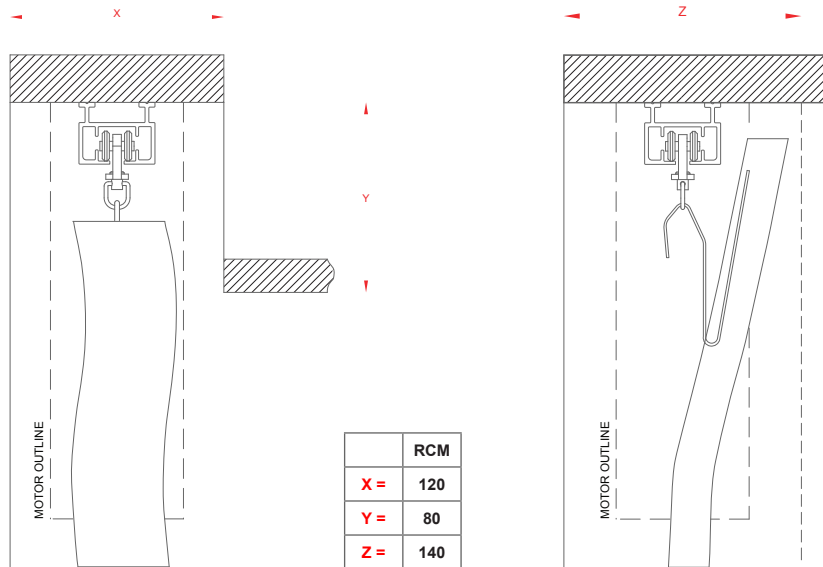
SPECIFICATIONS

› The track system is comprised of extruded aluminium alloy track 32 mm wide and 26 mm high. The fixing “cam clamps” are designed to twist and lock into a groove in the top face of the track and can be positioned anywhere along the length. These cam clamps are fixed to the substrate in the desired position with screws. Within the track, the nylon roller carriers are captured in grooves for positive alignment whilst travelling. The lead or driven carrier plate is fixed to the internal nylon drive belt and is positively positioned due to the holes formed to engage the drive sprocket. The curtain shall be suspended on the roller carriers spaced at approximately 80 mm when fully drawn with the first two curtain hooks fixed on the lead carrier plate for positive positioning.

The motor is a vertical axis, AC, asynchronous, squirrel cage, 240 volt motor producing either 35 (**RCM™ 35**) or 50 (**RCM™ 50**) watts respectively. Incorporated in the motor is a heavy duty, final drive, planetary reduction gearbox. Easy “bayonet” motor fitting allows removal of the motor for servicing. The curtain travel is limited in both directions by the adjustable limit switches positioned under the cover at the lower end of the motor. The motors are supplied with a 2 metre, four core lead with quickly detachable connector in the motor for ease of service.

Minimum Width	=	500 mm
Maximum Width	=	12,000 mm

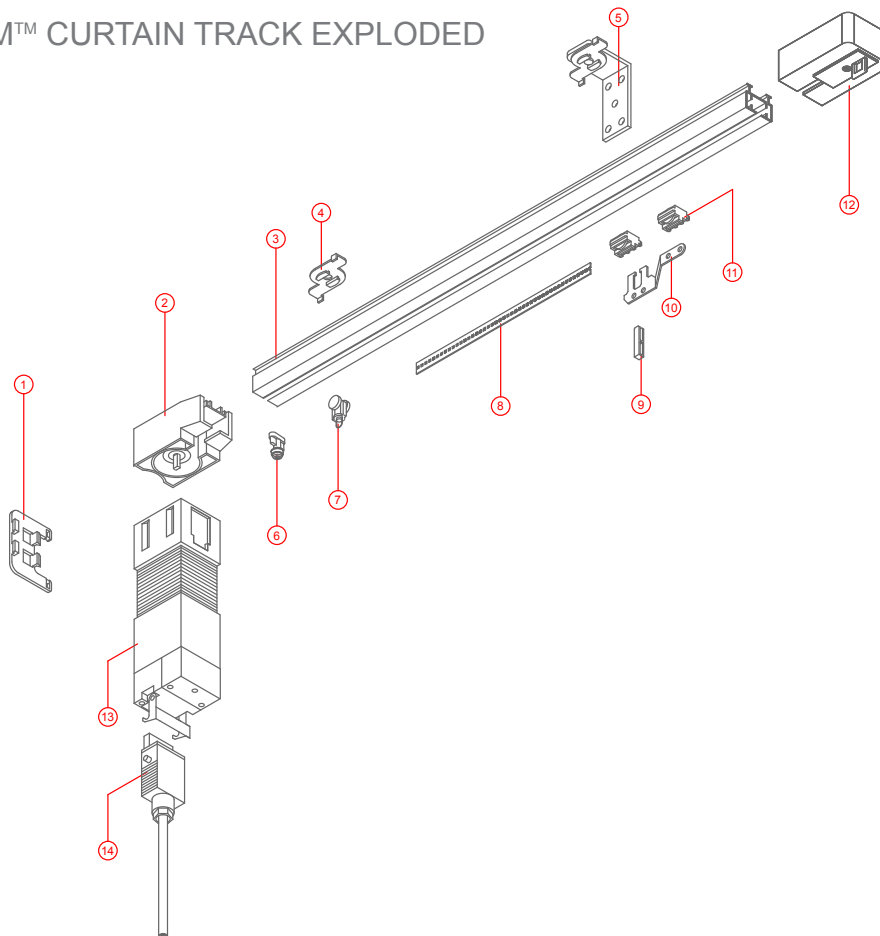
RCM™ CURTAIN TRACK



TOP FIX ARRANGEMENT
(CURTAIN BELOW TRACK)

TOP FIX ARRANGEMENT
(CURTAIN IN FRONT OF TRACK)

RCM™ CURTAIN TRACK EXPLODED



ITEM	DESCRIPTION
1.	RETURN MOTOR CLIP
2.	TRACK HEAD
3.	CURTAIN TRACK
4.	TOP FIX SWIVEL BRACKET
5.	FACE FIX BRACKET
6.	FIXED CARRIER
7.	ROLLING CARRIER
8.	DRIVE BELT
9.	LEAD CARRIER CLIP
10.	LEAD CARRIER
11.	BELT END CARRIAGE
12.	TRACK TAIL
13.	MOTOR
14.	MOTOR PLUG