

12" Wireless Touch Interface



12" Wireless Touch Interface connects to the Embedded Server via a standard 802.11 b/g wireless network.

The wireless touch panel provides a fully featured bi-directional interface option.

Install as many wired or wireless touch panels on the network to deliver whole house control.

Mount on wall - hardwired for recharging and connection.

Product Highlights

- *Embedded Interface*
- *Wireless interface option - control the house from one location*
- *Super light - only 1.5kg*
- *Connects to Embedded Server via standard 802.11b/g wireless network*
- *Optional powered wall dock*
- *3.5 hour battery life*

Features and Benefits

Easy to hold - 1.5 kg weight including battery

Finger touch - no pen required

Excellent power management enables 3.5 hour battery life

12" diagonal touch-screen

Connects to Embedded Server via Ethernet or Wireless Lan 802.11b/g

Displays an independent view of the configured project

Optional display of video intercom or security cameras on the interface

Requires only 1x network cable wired back to a router/modem with connection to Embedded Server

19v DC input via external power supply

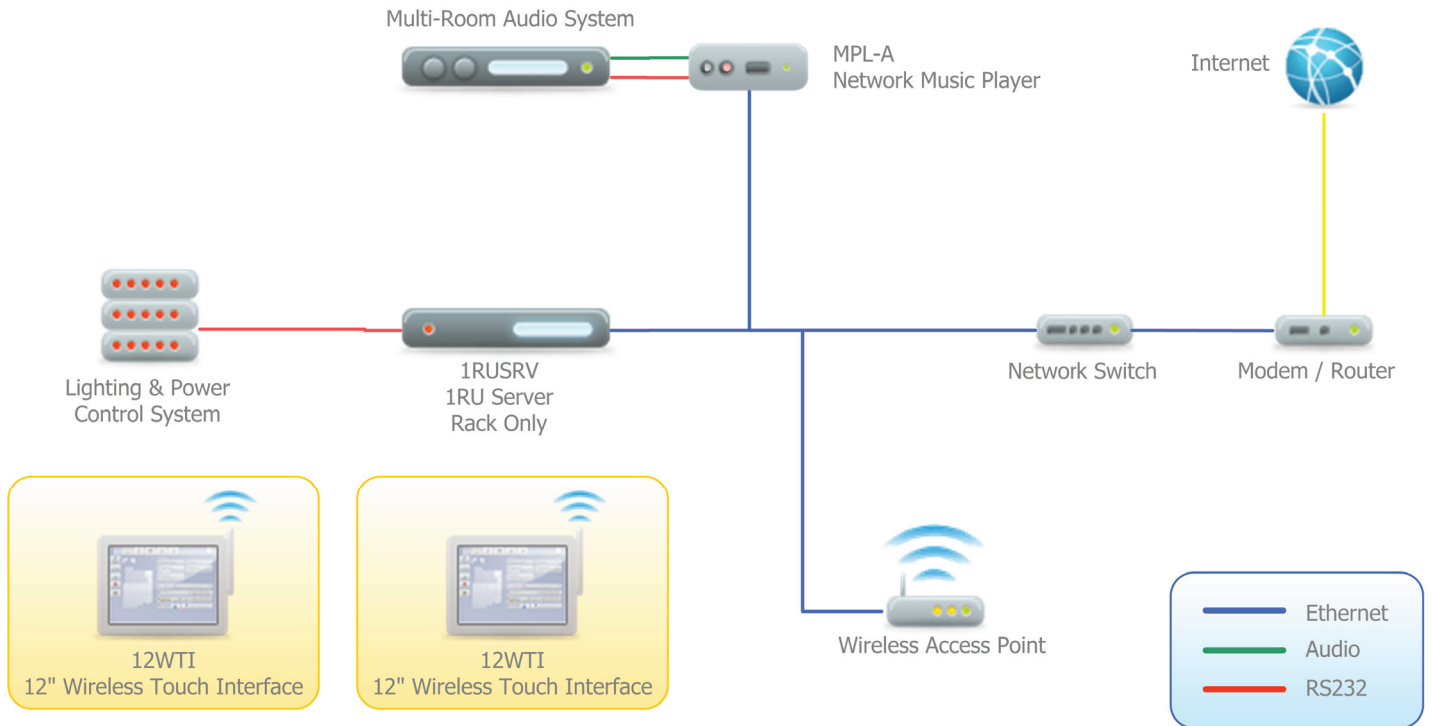
Modules and Drivers

Included:

1x Touch-screen Interface (MOD-ITF)

Schematic

12WTI



Specifications



- 1 = Jog Wheel, Press Enter
- 2 = DC Power Socket
- 3 = Fan (used only in peak times)
- 4 = Wireless Switch, Illuminated Blue = On
- 5 = Rotate, SOS, Menu Buttons
- 6 = Power Reset Switch (Normally On)
- 7 = Modem (not used)

- 8 = 10/100 Ethernet RJ45 Socket
- 9 = IEEE 1394 Firewire (not used)
- 10 = 2 x USB 2.0
- 11 = Speaker 3.5mm Socket, Microphone 3.5mm Socket (Speaker and Mic Built In)
- 12 = Stylus in spring loaded storage
- 13 = Finger / Stylus (resistive) Touch Screen
- (not visible) Dock socket on back, fixing locations

General:

Touch Tablet PC
 Intel Celeron M 1.0Ghz with Intel Speedstep
 Intel 855GM Video chipset with 64Mb shared memory
 512mb DDR RAM
 1GB Flash Memory
 Integrated Dual Speakers and Microphone
 XP Embedded Operating System

Display:

12.1" TFT Colour /24-bit dual-channel LVDS TFT LCD
 Resolution: 1024x768 (XGA)
 Touch-screen type: Resistive

Environmental and Mechanical:

Chassis Construction: Injection moulded polycarbonate
 Operating Temp: 0 - 40 degrees C
 Weight: 1.4 KG
 Dimensions (WxDxH): 292 x 218 x 23mm

Power Consumption:

DC19V via external PSU
 240V AC IEC power connector
 44w (Max) @ 240V AC

Optional Accessories:

12WD Vesa Mount Wall dock (Black only)

* Additional components required. Level of control depends on extent of network. All brand and/or product names are trademarks of their respective owners. Specifications are subject to change without prior notice. E&OE.

