

## Wired / Wireless IP Camera

**5200/IP633**

### Setup Sheet

The 5200/IP633 Wired/Wireless IP Camera provides a simple to use plug-and-view image source. It allows remote access from a Web browser for live image viewing. It supports the use of TCP/IP networking, UPnP, HTTP and other Internet protocols. Included is powerful application software for image capture and video recording. The camera has been configured for seamless use with the Wiser Home Control system.

The following items make up your 5200/IP633 system:

- CAS-633W IP Camera
- Quick Installation Guide
- Mounting bracket and mounting screws
- 5 V d.c. Power Pack with 4 interchangeable plugs for US, Europe, UK and Australia/New Zealand
- Software and documentation CD-ROM

### Welcome

The Setup Sheet provides basic information. For complete instructions, refer to the Quick Installation Manual provided with the camera unit.

If you have any questions or concerns, please contact your nearest Clipsal Integrated Systems (CIS) or Schneider Electric technical support or sales representative.



**Power Pack Ratings**

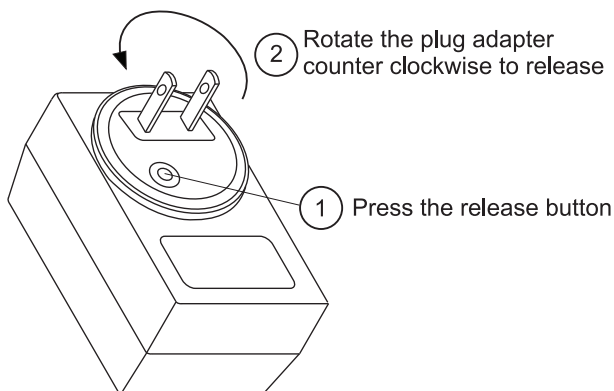
Voltage: 5 V d.c.  
Current: 2.6 A  
Power: 13 W maximum

**Changing the Power Pack Adapter**

The 5 V d.c. Power Pack comes with 4 different plug configurations. Choose the plug adapter that is appropriate for your country.

To remove a plug adapter from the Power Pack, press the adapter release button and rotate the plug adapter in a counter-clockwise direction. And then remove the adapter from the Power Pack.

To install a different plug adapter, insert the adapter into the slot and rotate it in a clockwise direction until the adapter clicks in place.



## Two-Year Warranty

The 5200/IP633 Wired/Wireless IP Camera carries a two-year warranty against manufacturing defects.

### Warranty Statement

The benefits conferred herein are in addition to, and in no way shall be deemed to derogate; either expressly or by implication, any or all other rights and remedies in respect to the Schneider Electric product which the consumer has in the location where the product is sold.

The warrantor is Schneider Electric with offices worldwide.

This Schneider Electric product is guaranteed against faulty workmanship and materials for a period of two (2) years from the date of installation.

Schneider Electric reserves the right, at its discretion, to either repair free of parts and labour charges, replace or offer refund in respect to any article found to be faulty due to materials, parts or workmanship.

This warranty is expressly subject to the Schneider Electric product being installed, wired, tested, operated and used in accordance with the manufacturer's instructions. Any alterations or modifications made to the product without permission of Schneider Electric could void the warranty.

Schneider Electric shall meet all costs of a claim. However, should the product that is the subject of the claim be found to be in good working order, all such costs shall be met by the claimant.

When making a claim, the consumer shall forward the Schneider Electric product to the nearest Schneider Electric office. Provide adequate particulars of the defect within 28 days of the fault occurring. The product should be returned securely packed, complete with details of the date and place of purchase, description of load, and circumstances of malfunction.

For all warranty enquiries, contact your local Clipsal sales representative. The address and contact number of your nearest sales office can be found at

<http://www.clipsal.com/locations>

or by telephoning Technical Support 1300 722 247 (CIS Technical Support Hotline).

---

## Clipsal Australia Pty Ltd

A member of Schneider Electric

**clipsal.com**

Technical Support email: [cis.support@clipsal.com.au](mailto:cis.support@clipsal.com.au)

Contact us: <http://www.clipsal.com/feedback>



Schneider Electric reserves the right to change specifications, modify designs and discontinue items without incurring obligation and whilst every effort is made to ensure that descriptions, specifications and other information in this instruction are correct, no warranty is given in respect thereof and the company shall not be liable for any error therein.

Copyright by Schneider Electric. All rights reserved.