



LINN DS PLAYERS

LINN

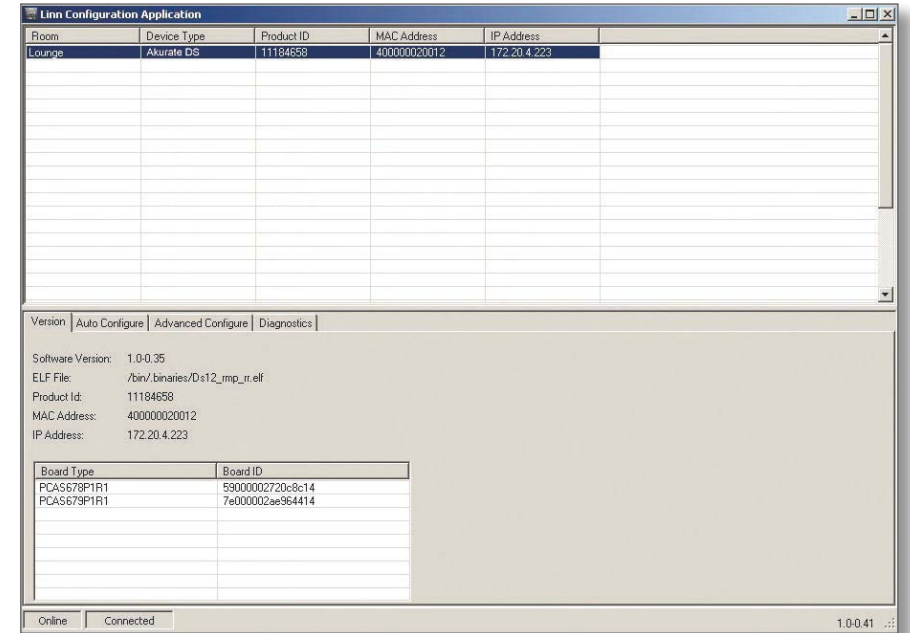
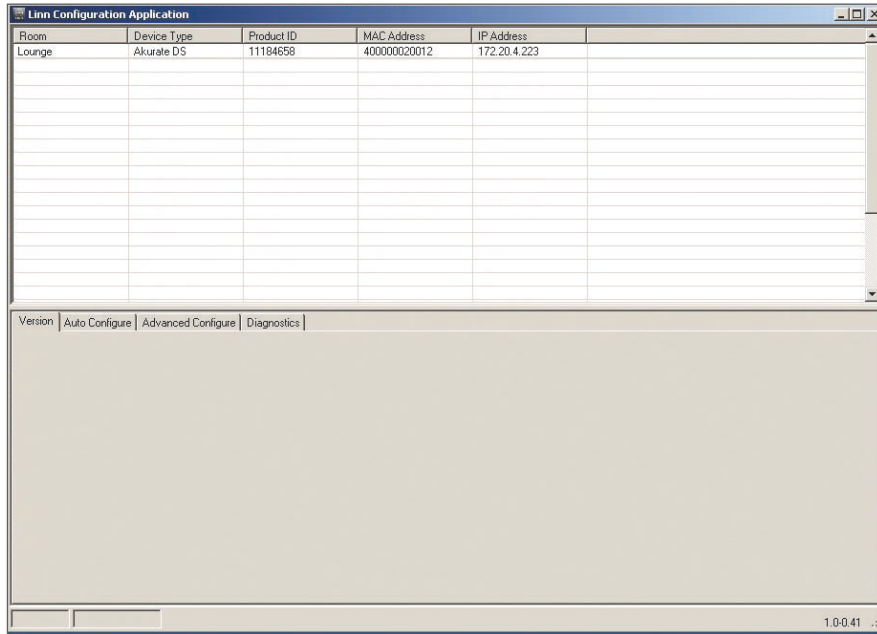
THE LINN CONFIG APPLICATION

The Linn Config application is used to configure the settings on your Linn DS player, and Klimax or Akurate pre-amplifier.

To use the Linn Config application:

1. Switch on your Klimax or Akurate pre-amplifier and wait until the standby symbol is shown on the display.
2. Switch on your Linn DS player and wait until the dot on the front panel stops flashing.
3. On your control device, launch the Linn Config if you have not already done so.

4. Highlight your DS player and wait until the Linn Config connects to the unit. The 'Version' tab contains information on your DS player for use by Linn Service personnel.



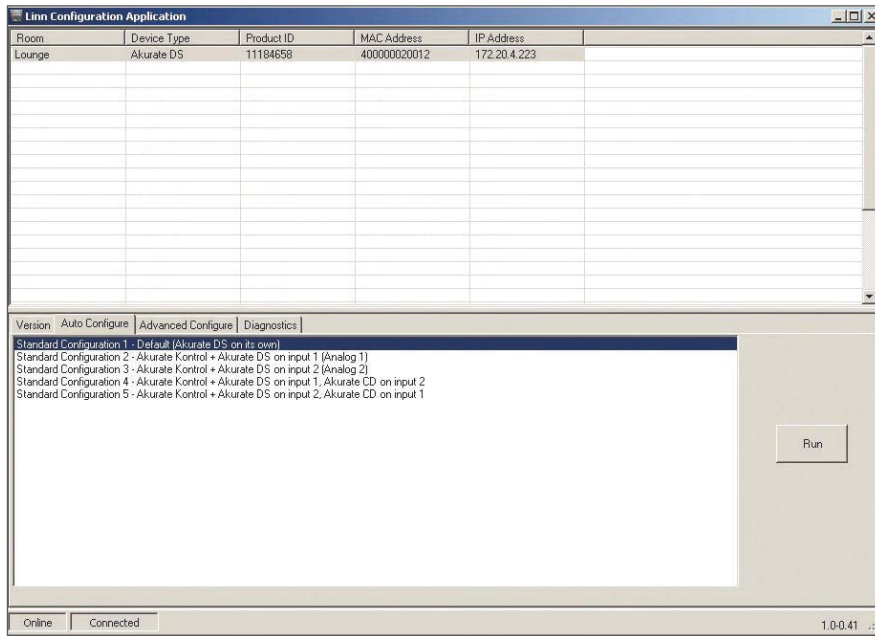


LINN DS PLAYERS

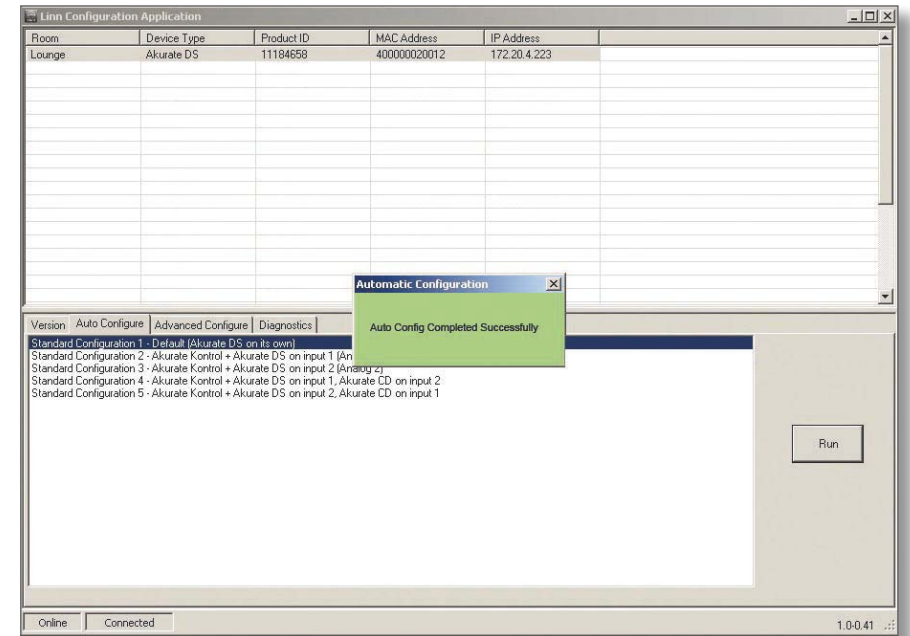
LINN

THE LINN CONFIG APPLICATION

5. Select the 'Auto Configure' tab. Select the configuration appropriate for your Linn DS system and press 'Run'.



6. Wait until the configuration has completed, then close the Automatic Configuration notice and select the 'Advanced Configure' tab.



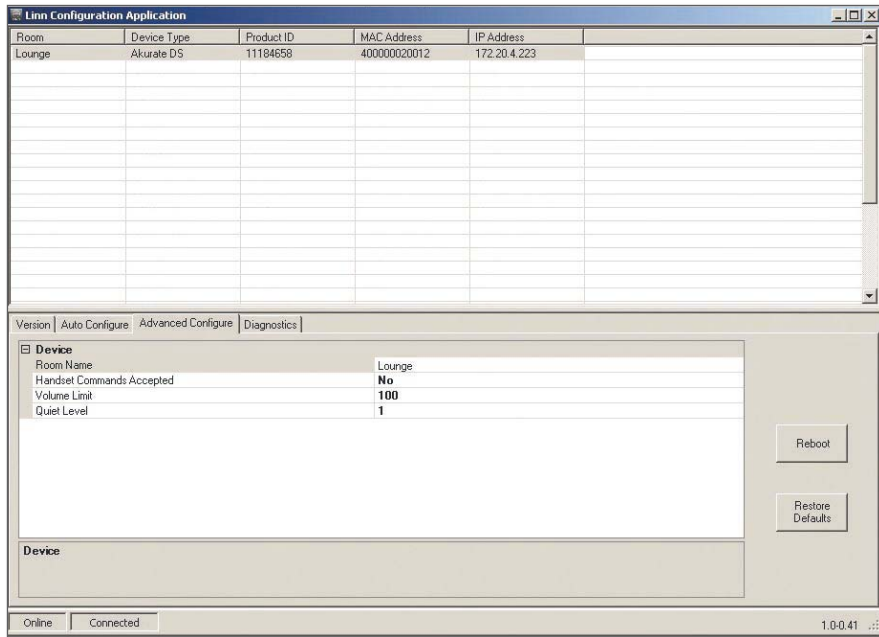


LINN DS PLAYERS

LINN

THE LINN CONFIG APPLICATION

- On this screen you are able to customise aspects of the configuration, for example you may want to change the Room Name, Device Name or Display Brightness. You are also able to add additional source products that you wish to select from the Linn GUI. If you change items in the 'Advanced Configuration' tab, press 'Reboot'.



- From the top window, select Klimax or Akurate Kontrol. On the 'Advanced Configuration' tab you will see the current configuration settings for the unit. You are able to change the settings, if required.

