

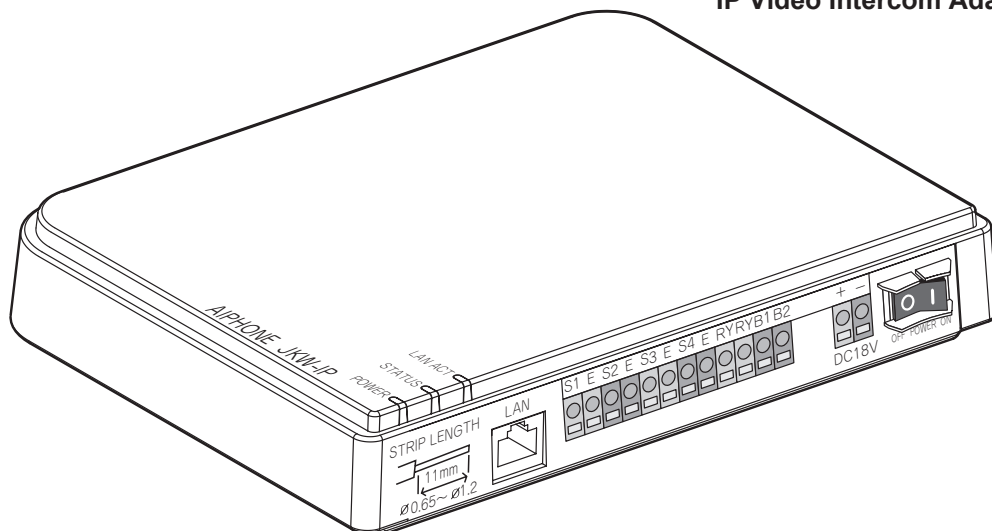


# JKW-IP

## IP Video Intercom Adaptor

### JKW-IP

#### IP Video Intercom Adaptor



### OPERATION MANUAL

# CONTENTS

<b>1 INTRODUCTION .....</b>	<b>6</b>	<b>4 PC Application Basic Operations..</b>	<b>41</b>
1-1 System Configuration Example .....	6	4-1 Video Intercom Functions .....	41
1-2 Names (IP Video Intercom Adaptor)..	7	4-1-1 Answering a call from the door station..	41
1-3 Setting Order.....	8	4-1-2 Door release .....	42
1-4 Starting up the IP Video Intercom Adaptor .....	9	4-1-3 Zoom/Wide, Pan & Tilt.....	43
1-5 Installing the PC Application .....	9	4-1-4 Adjust image .....	44
1-5-1 System Requirements.....	9	4-1-5 Room-to-room communication (Communication with a master monitor station) .....	44
1-5-2 Installing.....	10	4-1-6 Entrance monitoring.....	46
1-5-3 Uninstalling .....	12	4-1-7 Sensor Detection from Connected Equipment.....	47
1-5-4 Starting up the PC Application.....	12	4-1-8 Option Output from IP Video Intercom Adaptor .....	47
1-6 PC Application Window Names .....	13	4-1-9 Balloon Notification .....	47
Standard Window .....	13	4-2 Recording Function .....	48
Expanded Window.....	14	4-2-1 Auto Recording .....	48
<b>2 IP Video Intercom Adaptor Settings..</b>	<b>15</b>	4-2-2 Manual recording .....	49
2-1 Registering the IP Video Intercom Adaptor .....	15	4-3 Playback Function.....	50
2-2 Logging in .....	17	4-3-1 Play recorded image.....	50
2-3 Administrator Settings .....	18	4-3-2 Deleting a Recorded File .....	51
2-3-1 Administrator Registration.....	18	4-4 Sending Email.....	51
2-3-2 User Registration .....	19	<b>5 Others.....</b>	<b>52</b>
2-3-3 Email Setting (Adaptor).....	20	<b>Technical Precautions .....</b>	<b>54</b>
2-3-4 Sensor input / Option output Settings..	21	<b>Specifications.....</b>	<b>55</b>
2-3-5 Network Settings.....	23	<b>Warranty.....</b>	<b>56</b>
2-3-6 Log Downloading/Firmware Update..	27		
2-4 Registering IP Video Intercom Adaptor Users .....	30		
2-5 User Settings .....	32		
2-5-1 Downloading Encryption Key.....	32		
2-5-2 Email Setting.....	33		
<b>3 PC Application Settings .....</b>	<b>35</b>		
3-1 Setting the PC Application .....	35		
3-1-1 Volume Settings.....	35		
3-1-2 Preference Settings .....	37		

# PRECAUTIONS



Warning and Caution



General Prohibitions



Prohibition to Dismantle the Unit



Prohibition on Subjecting the Unit to Water



General Precautions

## WARNING

**Negligence could result in death or serious injury.**

- ⊘ 1. Do not dismantle or alter the unit. Fire or electric shock could result.
- ⊘ 2. High voltage is present internally. Do not open the case. Electric shock could result.
- ⊘ 3. Do not connect any non-specified power source to the +, - terminals. Also, do not install two power supplies in parallel to a single input. Fire or damage to the unit could result.
- ⊘ 4. Do not connect any terminal on the unit to an AC power line. Fire or electric shock could result.
- ⊘ 5. Do not use power supply with a voltage other than specified. Fire or electric shock could result.
- ⊘ 6. Keep the unit away from water or any other liquid. Fire or electric shock could result.
- ⊘ 7. Do not put any metal or flammable material into the unit through the openings. Fire, electric shock, or unit trouble could result.

## CAUTION

**Negligence could result in injury to people or damage to property.**

- ⊘ 1. Do not install or make any wire terminations while power supply is plugged in. It can cause electrical shock or damage to the unit.
- ⓘ 2. When mounting the unit on a wall, install the unit in a convenient location, but not where it could be jarred or bumped. Injury could result.
- ⓘ 3. Before turning on power, make sure wires are not crossed or shorted. If not, fire or electric shock could result.
- ⊘ 4. Do not install the unit in locations subject to frequent vibration or impact. It may fall or tip over and possibly damage the unit.
- ⓘ 5. For power supply, use Aiphone power supply model or model specified for use with system. If non-specified product is used, fire or malfunction could result.
- ⊘ 6. Do not put anything on the unit or cover the unit with cloth, etc. Fire or unit trouble could result.
- ⊘ 7. Do not install the unit in any of the following locations. Fire, electric shock, or unit trouble could result.
  - \* Places under direct sunlight or places near heating equipment that varies in temperature.
  - \* Places subject to dust, oil, chemicals, etc.
  - \* Places subject to moisture and humidity extremes, such as bathrooms, cellars, greenhouses, etc.
  - \* Places where the temperature is quite low, such as inside a refrigerated area or in front of an air conditioner.
  - \* Places subject to steam or smoke (near heating or cooking surfaces).
  - \* Where noise generating devices such as dimmer switches or inverter electrical appliances are close by.

## General Precautions

1. Keep the unit more than 1 m away from radio or TV set.
2. Keep the intercom wires at least 30 cm (12") away from AC 100-240 V lines. Noise and malfunction could result.
3. Install the unit in an area that will be accessible for future inspections, repairs, and maintenance.
4. As to other manufacturer's devices (such as sensor, detectors, door releases) used with this system, comply with the Specifications and Warranty conditions that the manufacturers or vendors present.
5. This unit is for indoor use only. Do not use outdoors.
6. If the unit is down or does not operate properly, unplug the power supply or turn off the POWER switches.
7. When wall-mounted, the top of the unit may darken. This does not indicate a malfunction.
8. The unit case may become warm with use, but this is not a unit malfunction.
9. If a cellular phone is used close by, the unit may malfunction.
10. The unit can be damaged if dropped. Handle with care.
11. The unit turns inoperative during power failure.
12. In areas where broadcasting station antennas are close by, the intercom system may be affected by radio frequency interference.

## Notes on Usage

- The times for the master monitor station and the PC Application are not synchronized.
- Lip-sync is not performed for audio and video in the PC Application.
- Depending on the network environment and computer, it may not be useable.
- There are times when audio and video may be delayed in the PC Application due to encoding, decoding, or the network.
- Start the IP Video Intercom Adaptor (turn on the power) only after you have connected all cables, such as wires or LAN cables, to the master monitor station correctly. In particular, when the power for the master monitor station is turned on after the IP Video Intercom Adaptor has started, an error sound may be generated on the computer if the PC Application cannot connect to the master monitor station. Also, turn off the power for the IP Video Intercom Adaptor before disconnecting any cables from the Adaptor.
- The User ID/Password to access the IP Video Intercom Adaptor is the customer's responsibility. Make sure you set a password that cannot be easily guessed by a third party. We recommend that you change the User ID/Password on a regular basis.
- Depending on the router, it may not operate. Check our website (<http://www.aiphone.net/>) for a list of supported routers.
- If you cannot access the IP Video Intercom Adaptor, or if a problem occurs such as Email not being received correctly, turn the power to the IP Video Intercom Adaptor off and then on again, and restart the main unit. If this does not fix the problem, restart the modem or router, and then restart the IP Video Intercom Adaptor.
- See the Installation & Operation Manuals provided with the Video Intercom for connection and operation procedures.
- Depending on the network environment or the computer's performance, operations may not be carried out normally, such as interrupted audio or video, and delayed frame rate decrease.
- You need a broadband connection to use this product over the Internet. Also, the router needs a Static Global IP Address.
- We recommend a 100BASE-TX wired LAN network.
- We do not recommend using a wireless LAN as it may not operate correctly due to security issues or communication speed delays.
- When operating PC Application in succession, the operation may become invalid.

## Notes on Usage (Communication)

- When communicating via the PC Application, use a headset to prevent feedback. When using the headset, the call tone does not sound from the computer's speaker. Confirm the call by the headset or the screen display.
- If there are loud noises (such as children crying, music playing, or strong winds) around the computer or the door station, the sound may break up and be difficult to hear.
- During communication with the door station, if you speak before the other person has finished talking, your voice may not come through clearly. Communication will proceed smoothly if you wait until the other person has finished before speaking.
- A hands-free (VOX) system has been implemented for communication. Even if you use a headset with the PC Application, you cannot carry out simultaneous conversations. (Communication is not full duplex.)
- The talk and call tone volumes vary depending on the PC Application settings, computer settings, and headset volume. Pay careful attention to the volume when monitoring or talking.

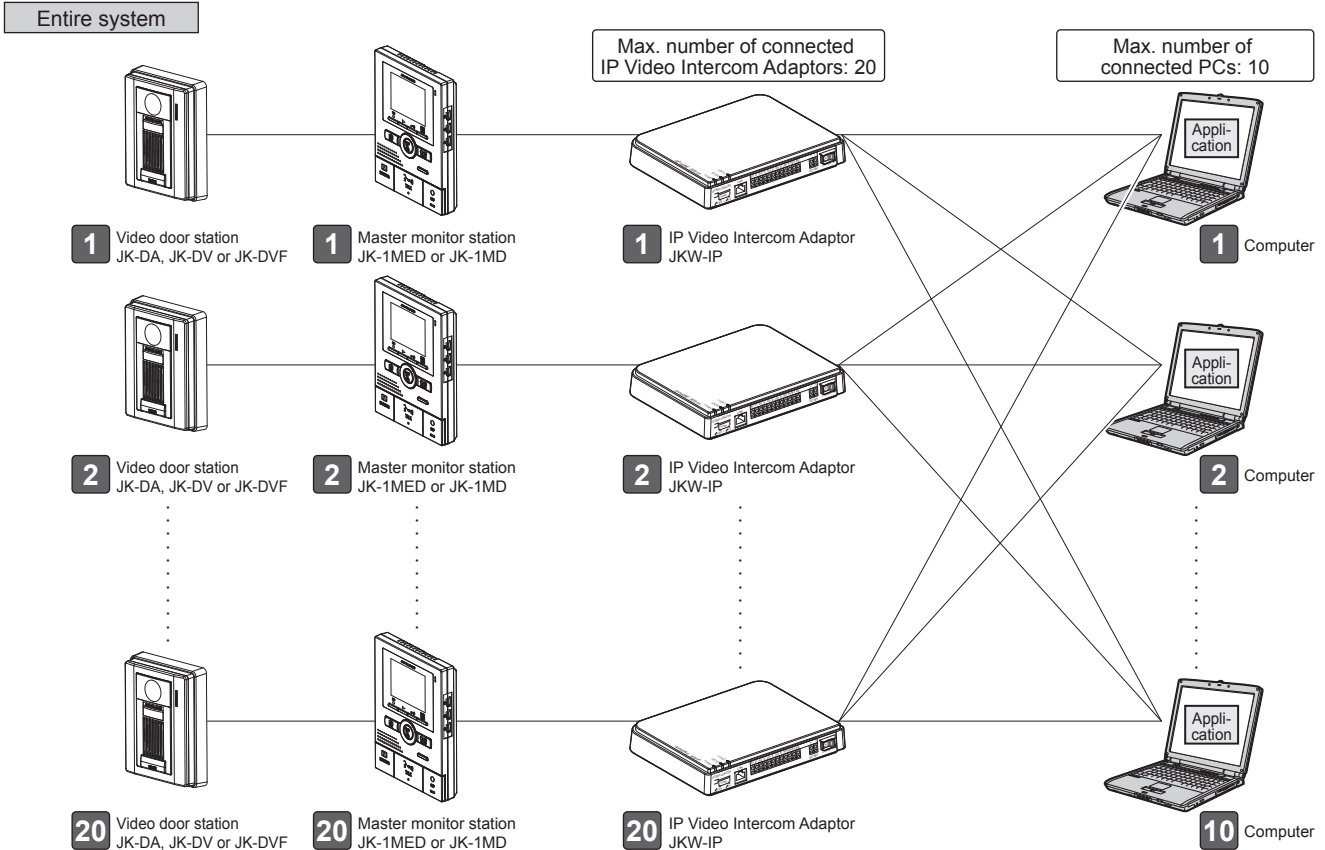
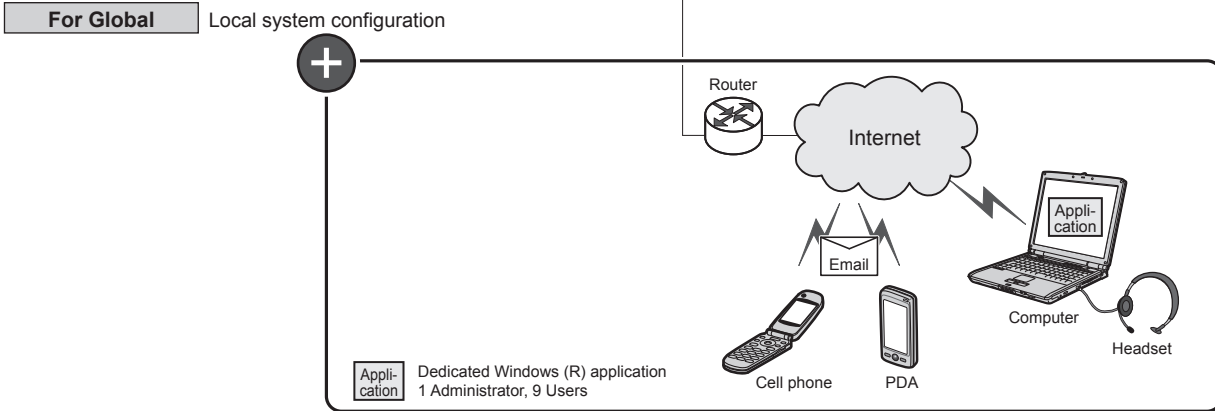
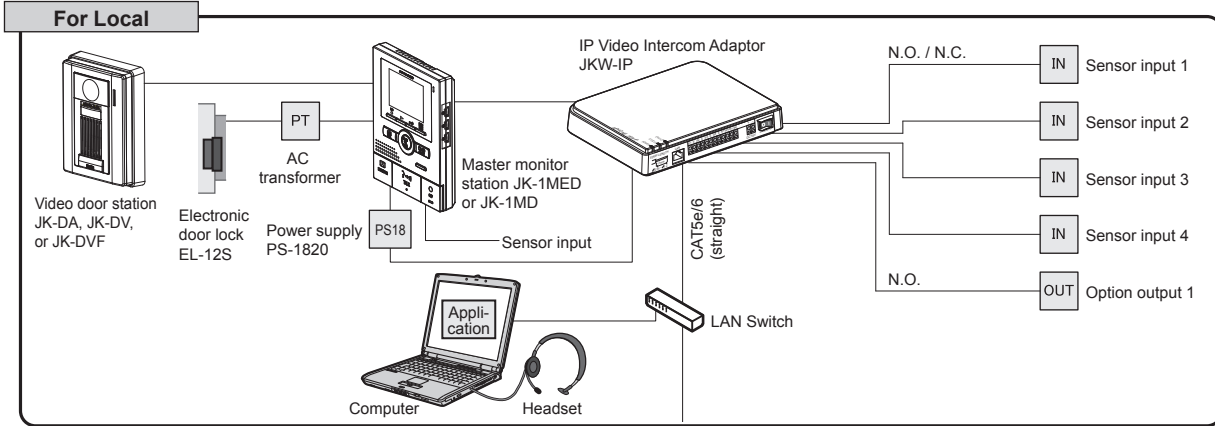


## Notices

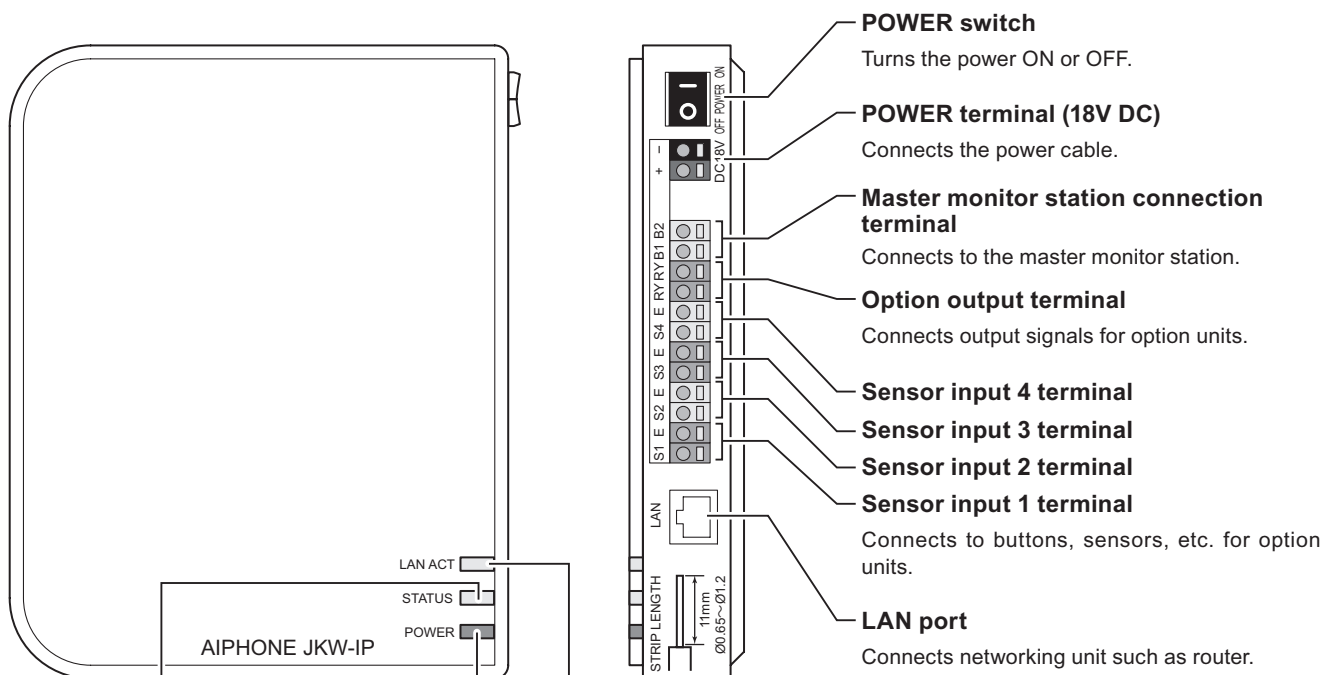
- We will under no conditions be liable for damage that occurs due to failures in network equipment; failures due to internet providers and cell phone companies; failures such as disconnected lines and other losses in communication, which render it impossible to provide this service or in any way delay this service due to causes outside of our responsibility; or if an error or missing data occurs during transmission.
- We will under no conditions be liable for damage that occurs due to the inability to communicate due to malfunctions, problems, or operational errors in this product.
- We will under no conditions be liable for damage caused if a customer's password or transmitted information are leaked through bugging or unlawful computer access over Internet communication.
- We will under no conditions be liable for any damages or losses resulting from this product's contents or specifications.
- This manual was created by Aiphone Co., Ltd., all rights reserved. Copying a part of or this entire manual without prior permission from Aiphone Co., Ltd. is strictly forbidden.
- Please note that images depicted in this manual may differ from the actual images.
- Please note that this manual may be revised or changed without prior notice.
- Please note that product specifications may be changed for the sake of improvement without prior notice.
- Please be aware that it is the customer's responsibility to ensure that their computer is secure. We will under no conditions be liable for security failures.
- This system is not intended for life support or crime prevention. It is just a supplementary means of conveying information. Aiphone will under no conditions be liable for loss of life or property which occurs while the system is being operated.
- When the IP Video Intercom Adaptor is initialized, all the registrations are returned to factory default settings. Follow the setup procedure for the IP Video Intercom and the PC Application again.

# 1 INTRODUCTION

## 1-1 System Configuration Example



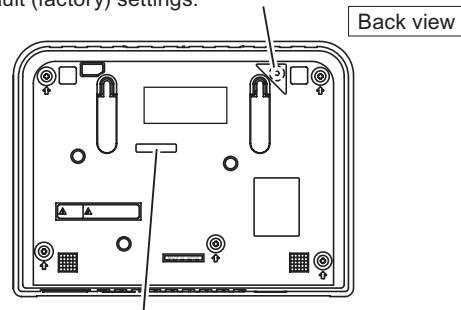
# 1-2 Names (IP Video Intercom Adaptor)



**Default setting switch (within the sticker area)**  
When pressed for 5 seconds or more, IP Video Intercom Adaptor settings are returned to their default (factory) settings.

**Indicator operation summary**

Indicator	Description
<b>LAN ACT indicator (Orange)</b> 	Lit • Normal operation (When connected to network)
	Blinking • Exchanging information with LAN port
	Off • Network connection abnormality
<b>STATUS indicator (Orange)</b> 	Lit • Normal operation
	Blinking • Starting up • When the default setting switch is pressed and held for 5 seconds or more
<b>POWER indicator (Green)</b> 	Lit • Power is on
	Blinking • Abnormality in communication with master monitor station
	Off • Power is off



**MAC Address (Do not remove.)**

Never press the default setting switch unless it is necessary. The registered settings will return to the default (factory) settings.

# 1-3 Setting Order

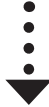
MEMO

- Be sure to check the system configuration before making settings, and then connect the units correctly.
- You need to contact your provider (ISP) to connect to the Internet.
- Before making settings, be sure to obtain necessary information such as the Static IP Address, Email Addresses, and any other necessary information.
- \* The IP address of this device is fixed at 192.168.0.30 (default setting). If the same address is already being used for another device, please change the IP address for the other device.

 Use the following steps to set up this product. If you do not, this product cannot be used.

**Step 1** Starting up the IP Video Intercom Adaptor **P.9**

Setting Authority	
Administrator	User
<input type="radio"/>	—



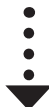
**Step 2** Installing the PC Application **P.9**

Setting Authority	
Administrator	User
<input type="radio"/>	<input type="radio"/>



**Step 3** Registering the IP Video Intercom Adaptor **P.15**

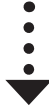
Setting Authority	
Administrator	User
<input type="radio"/>	—



**Step 4** Administrator Settings **P.18**

- Administrator Registration
- User Registration
- Email Setting (Adaptor)
- Sensor input / Option output Settings
- Network Settings
- Log Downloading/Firmware Update

Setting Authority	
Administrator	User
<input type="radio"/>	—



**Step 5** Registering IP Video Intercom Adaptor Users **P.30**

Setting Authority	
Administrator	User
—	<input type="radio"/>



**Step 6** User Settings **P.32**

- Downloading Encryption Key
- Email Setting

Setting Authority	
Administrator	User
<input type="radio"/>	<input type="radio"/>



**Step 7** Setting the PC Application **P.35**

- Volume Settings
- Preference Settings

Setting Authority	
Administrator	User
<input type="radio"/>	<input type="radio"/>

## 1-4 Starting up the IP Video Intercom Adaptor

Use the following steps to start up the IP Video Intercom Adaptor.

1. Check that the wires are connected correctly.
2. Turn on all connected equipment except for the IP Video Intercom Adaptor.
3. Turn on the POWER switch for the IP Video Intercom Adaptor.
  - The POWER indicator (Green) and the LAN ACT indicator (Orange) light, and the STATUS indicator (Orange) blinks.



STATUS indicator  
(Orange) blinking

**MEMO** For more information on the indicators, see "Indicator operation summary" in "Names (IP Video Intercom Adaptor)". **P.7**

4. The STATUS indicator (Orange) changes to lit.
  - The IP Video Intercom Adaptor is now ready for use.



STATUS indicator  
(Orange) lit

## 1-5 Installing the PC Application

Install the PC Application on your computer from the CD supplied with this product.

You may need to be logged on to your computer as the Administrator to install the PC Application.

### 1-5-1 System Requirements

Your computer must meet the following system requirements to use the PC Application.  
Check the Operation Manual supplied with your computer.

OS	Windows XP Home/Professional(SP3), Windows Vista Ultimate/Home/Business/Enterprise(SP1)
PC system requirements	Processor: 2 GHz or faster System memory (RAM): 1 GB RAM or more Hard disk: 10 MB or more (additional space is needed for recording) Sound card: 8 bit full duplex, Direct Sound compatible Display: 1024 x 768 or greater Run-time: Microsoft(R).NET Framework 2.0 or later Network: 10BASE-T/100BASE-TX Ethernet
Protocol	TCP/IPv4, UDP/IPv4, SIP, Others
Network bandwidth	320 k to 8 Mbps (per IP Video Intercom Adaptor)
Language	English, French, Spanish, German, Dutch, Italian, Japanese
Internet Explorer	Internet Explorer 6.0 or later (with Internet Options SSL 3.0 enabled)

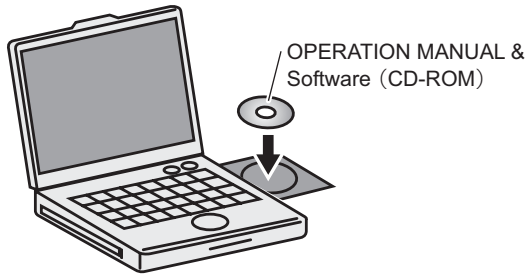
**!** The PC Application may not run, or may not operate correctly (such as freezes occurring) on a computer with specifications below the necessary requirements.

Serious damage could be caused if an error occurs during door release.

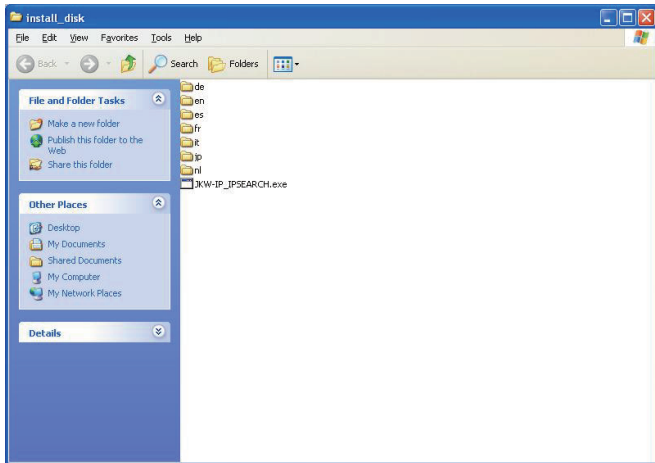
We recommend using a computer that exceeds the basic system requirements.

**1-5-2 Installing**

1. Insert the CD-ROM into your computer.



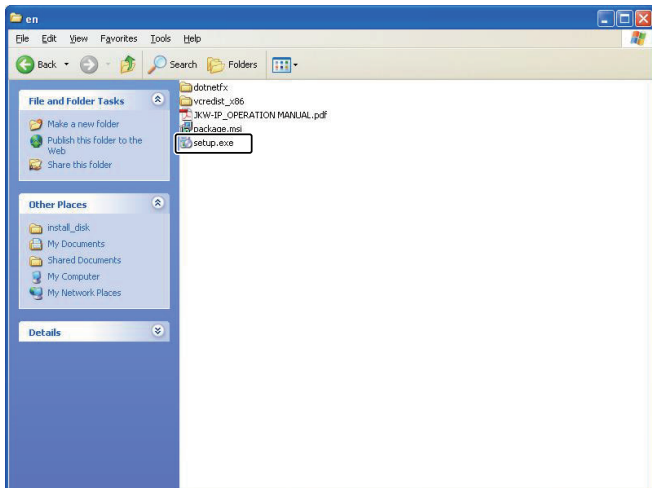
2. Double-click the relevant language folder on the CD-ROM.



- de: German
- en: English
- es: Spanish
- fr: French
- it: Italian
- jp: Japanese
- nl: Dutch

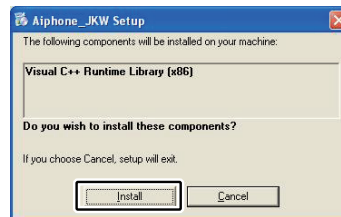
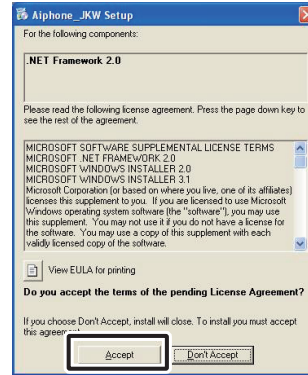
3. Double-click [setup.exe], and then follow the on-screen instructions to install.

• The Aiphone\_JKW Setup Wizard window is displayed.



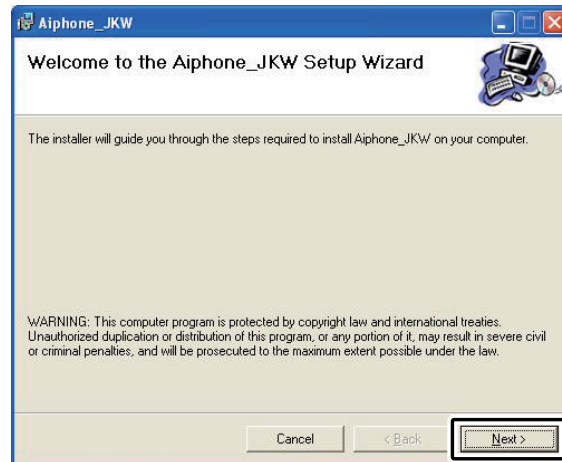
• If ".NET Framework" is not already installed, the .NET Framework installation window is displayed. Follow the on-screen instructions to install.

**MEMO** • When starting up the application, if a security or virus check warning is displayed, please allow the application to continue.



4. Click [Next].

• The Select Options window is displayed.

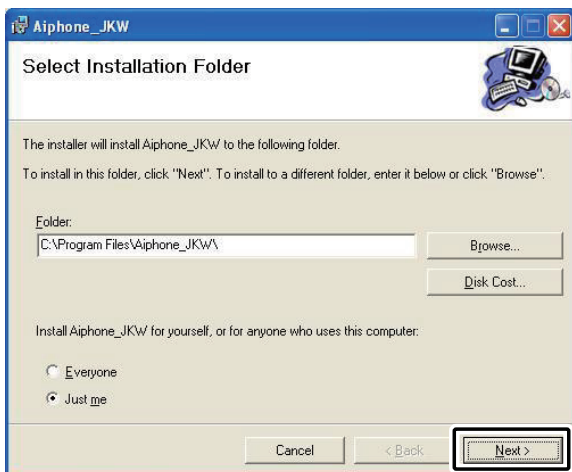


**5.** Click [Next].

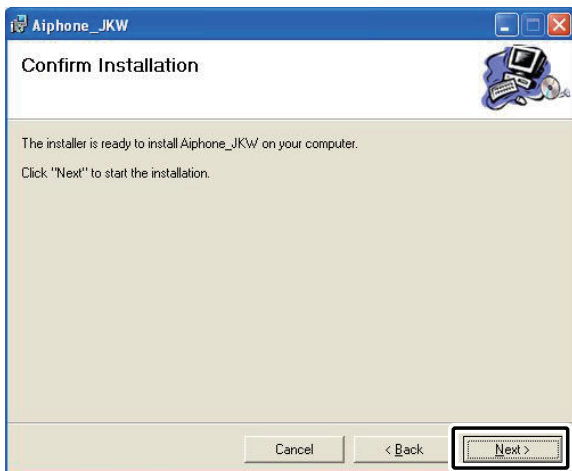
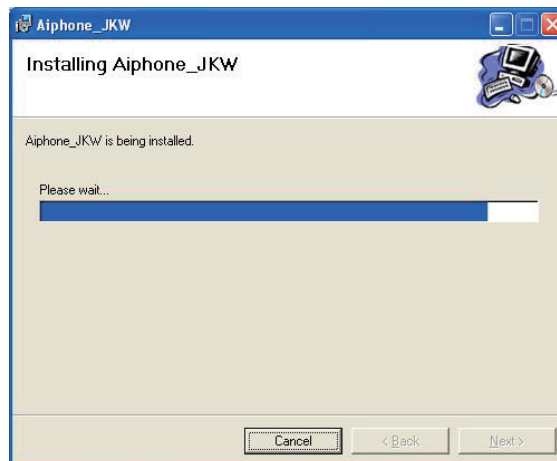
- The Select Installation Folder window is displayed.

**6.** Click [Next].

- The folder in which the application is to be installed is created.

**7.** Click [Next].

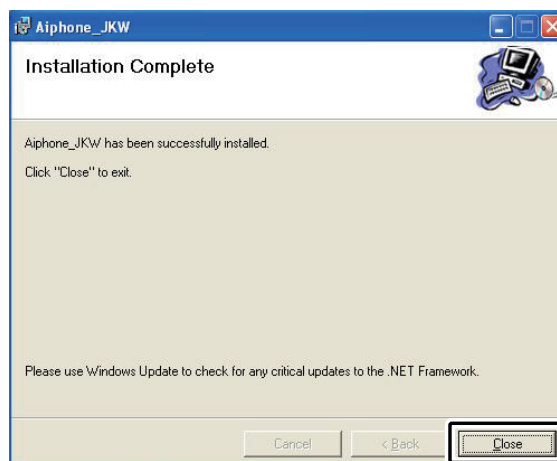
- Installation begins.

**8.** When the installation is complete, the Select Recording File Storage Folder (Browse for Folder) window is displayed.**9.** Select the folder where you want to save recorded files, and then click [OK].

- The selected folder becomes the storage location for recorded files.

**10.** Click [Close].

- Installation is complete.



**MEMO** • For Vista users, a different screen to the one shown above is displayed. Follow the on-screen instructions to install.



### 1-5-3 Uninstalling

From the Windows "start" menu, select "Control Panel" → "Add or Remove Programs", and select "Aiphone\_JKW" to delete it.

### 1-5-4 Starting up the PC Application

To start up the PC Application, double-click the

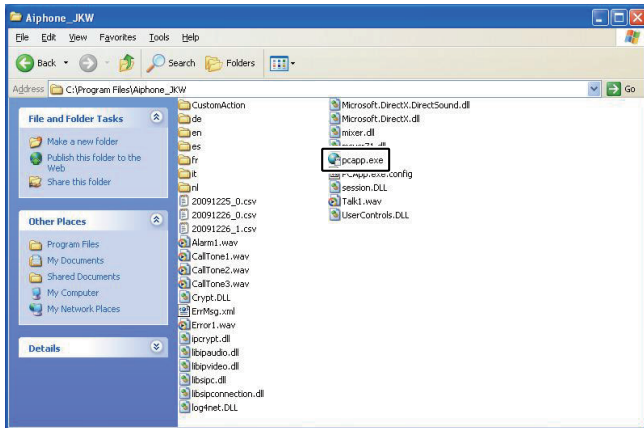
"  " icon on the desktop.  
Aiphone\_JKW

You can also start up the PC Application by selecting "Aiphone\_JKW" from the "All Programs" list in the "start" menu. Alternatively, you can run "pcapp.exe" from the installation folder (C:\Program Files\Aiphone\_JKW).

When selecting from the "All Programs" list



When running "pcapp.exe"



- If another location is specified during installation, run "pcapp.exe" from your selected location.



## 1-6 PC Application Window Names

The PC Application window consists of a "Standard Window" and an "Expanded Window".

You can switch between the Standard Window and the Expanded Window by clicking the [Standard window] or [Expand window] button.

### Standard Window

In the Standard Window, you can perform the following setting operations.

#### [SENSOR] display

Displays the status of incoming signal(s) from option unit(s)

P.47

#### Screen

Displays images from the door station

#### [MESSAGE] display

Displays a message when a function is operated

Message List
<Adaptor Name>
<Adaptor Name> CALLING FROM DOOR
<Door station No.>
<Adaptor Name> DOOR <Door station No.> COMMUNICATING
<Adaptor Name> DOOR <Door station No.> MONITORING
CALLING TO ANOTHER ROOM ST
<Adaptor Name> CALLING FROM ANOTHER ROOM ST
<Adaptor Name> COMMUNICATING WITH ANOTHER ROOM ST
<Adaptor Name> EXTERNAL INPUT
<Adaptor Name> EXTERNAL INPUT <No.>
<Adaptor Name> CALLING TO ANOTHER ROOM ST
<Adaptor Name> SYSTEM IS IN USE

#### [OPTION] button

Operates option unit

P.47

#### [Pan & tilt] button

Operates Pan & Tilt on the Zoom screen

P.43

#### [CALL] button

Calls the master monitor station

P.45

#### [MONITOR] button

Displays images from the door station on the screen P.46

#### [TALK] button

Starts communication

P.41 to 42

#### [● (Rec) / ■ (Stop)] button

Records the displayed image on the hard disk drive (HDD)  
Stops recording

P.48 to 49

#### [▶ (Open play window)] button

Plays back images recorded on the PC

P.50

#### [ (Minimize)] button

Minimizes the PC Application window

#### [ (Expand window)] button

Switches to the Expanded Window

#### [X (Close)] button

Closes the PC Application

#### Date Display

Displays the date set in the computer

#### [ZOOM / WIDE] button

Switches the door station image between wide and zoom

P.43

#### [ (Door release)] button

Releases the electronic door lock P.42

#### [ADJUST] button

Adjusts the image to make it easier to see when there is backlight in the day or when it is dark P.44

#### [OFF] button

Turns off Talk, Monitor, and Call P.41 to 47

#### [PC SETTING] button

Opens the PC Application Settings window P.35 to 40

#### Version Display

Displays the PC Application version



MEMO • This is the screen displayed after registration.

## Expanded Window

The following explains the various buttons in the Expanded Window and the display contents.  
The content on the left-hand side of the window is the same as the Standard Window.

### [Adaptor] display








Displays the Adaptor name  
If no name is set, the MAC Address is displayed

### [No] display

Displays the Adaptor number  
Selects the Adaptor

### [Status] display

Displays the Adaptor status

Color	Comment	Description
 Red	1 CALL DOOR	Displayed when there is a call from the door station
 Green	COMMUNICATION	Displayed during communication
 Green	MONITOR	Displayed during monitoring
 Orange	1 CALL ROOM ST	Displayed when there is a call from the master monitor station
 Orange	CALL	Displayed when there is a call from the PC Application
 Gray	<No display>	Encryption key not acquired (During standby)
 Blue	<No display>	Displayed during standby

### [Standard window] button

Switches to the Standard Window [P.13](#)

### [Sensor] display

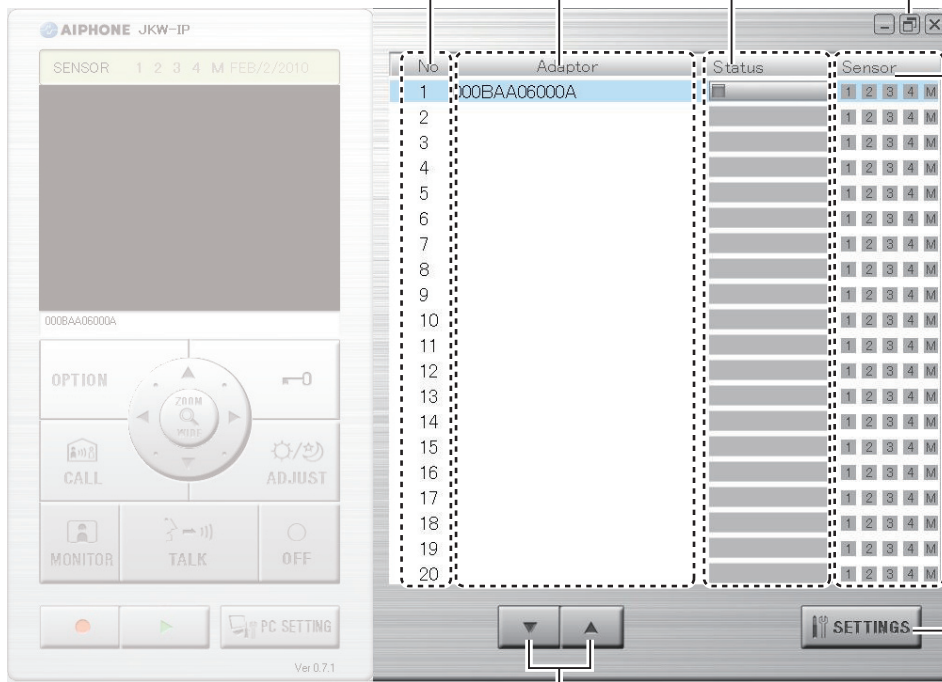
Displays the status of incoming signals from option unit(s)  
[P.47](#)

### [SETTINGS] button

Opens the settings window for the Adaptor  
[P.17](#)

### [▼▲] buttons

Changes the order of Adaptor display



- MEMO**
- You can select the corresponding Adaptor by clicking the line for the optional Adaptor. Clear the selection by clicking the selected Adaptor again.
  - Status display cannot indicate the usage status of other PC Applications.
  - To delete an Adaptor, move the mouse's pointer to the Adaptor you want to delete in the "disconnected" status, right-click, and then select "Delete".

## 2 IP Video Intercom Adaptor Settings

See "Settings List" [P.52](#) for a list of the IP Video Intercom Adaptor settings.

### 2-1 Registering the IP Video Intercom Adaptor

**Administrator**

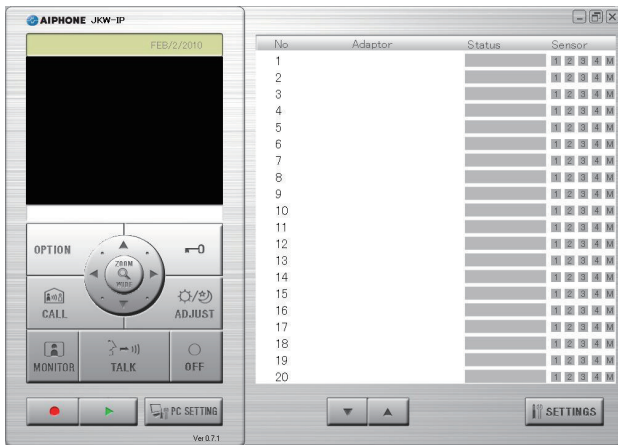
To operate the IP Video Intercom Adaptor, you need to register the IP Video Intercom Adaptor connected to the system. When making settings for the first time, be sure to make settings for the IP Video Intercom Adaptor with a Local connection. Even if it is to be used with Global, first make router settings and Network Settings [P.23 to 26](#) for Global with the Local connection.

Register from the Adaptor list on the right-hand side of the Expanded Window. When registration is complete, each IP Video Intercom Adaptor name (the default is the MAC Address) is displayed under "Adaptor" in the Adaptor list. The registered IP Video Intercom Adaptor is automatically recognized the next time the PC Application is started up, and it is displayed in the Adaptor list.

**MEMO**

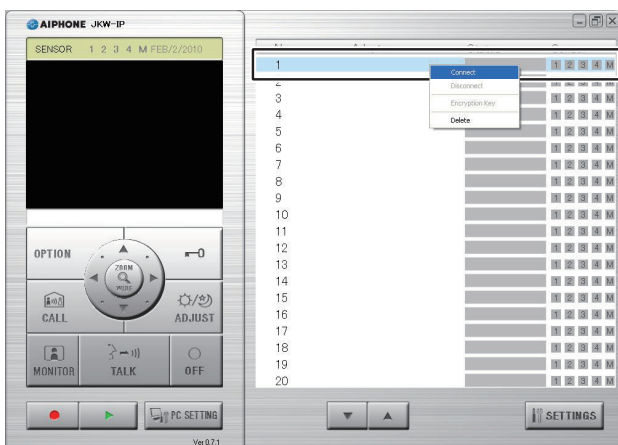
- You can change the Adaptor Name and IP Address for each IP Video Intercom Adaptor from Administrator Settings/ Network Settings. See "Network Settings" for more details. [P.23](#)

1. Start up the PC Application, and display the Expanded Window.



2. Select the number where you want to register the IP Video Intercom Adaptor, right-click, and then select "Connect" from the menu displayed.

- The Adaptor Registration window is displayed.



3. Enter the unique IP Address, Connection Port, Connection Password, and Web Port for the registered IP Video Intercom Adaptor.

- Enter "192.168.0.30" as the IP Address, "5060" as the Connection Port, "aiphone" as the Connection Password, and "443" as the Web Port.

**!** Duplicated IP Addresses cannot be set on the same LAN.

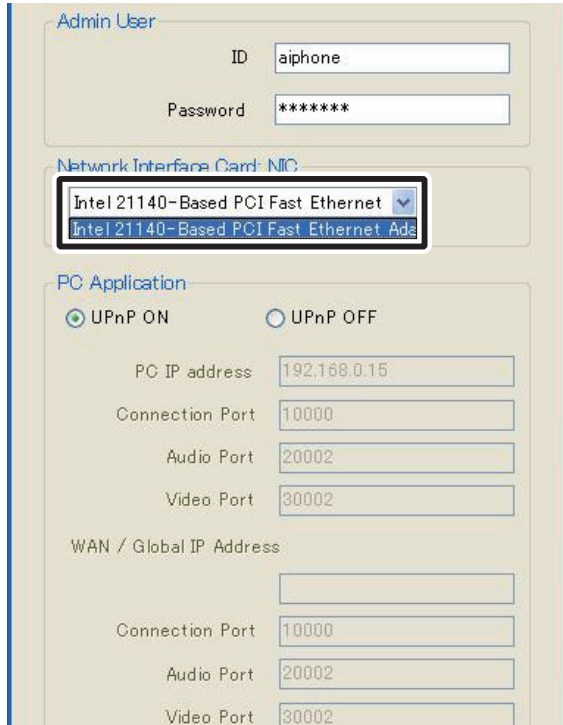
- For Global, enter the router's Global IP Address as the IP Address.
- If you do not know your Local IP Address, run "JKW-IP\_IP\_SEARCH.exe" from the CD-ROM supplied, and then click the "Search" button. It searches for the IP Video Intercom Adaptor on the network, and then displays the MAC Address and the IP Address. It is set to 192.168.0.30 at the time of shipping.

4. Enter the Administrator's ID and Password.

**MEMO**

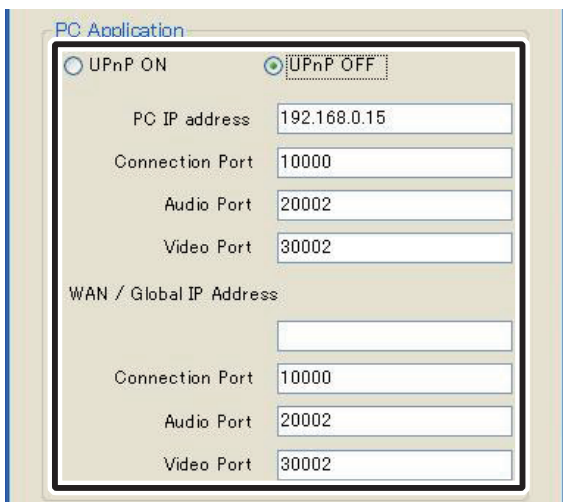
- Enter "aiphone" as the ID, and "aiphone" as the Password. If they are not entered correctly, an ID error will occur for login.
- You need a Static Global IP Address for the Global IP Address. It does not support DDNS service.

5. Select the optional NIC (Network Interface Card) being used.



6. For Global, if it cannot be automatically set with UPnP, select UPnP OFF and, after setting the router, enter the following items.

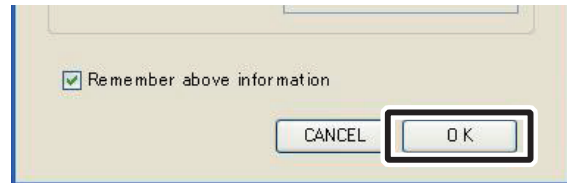
- If the router does not support UPnP, select UPnP OFF and enter the router information.
- For Local, and when it can be automatically set with Global, it is not necessary to enter the router information.



- For Global, it may be necessary to change ports when you are using multiple IP Video Intercom Adaptors or PC Applications. Please check our homepage at <http://www.aiphone.net> for more details.
- For the router setting information, see the Operation Manual supplied with the router.

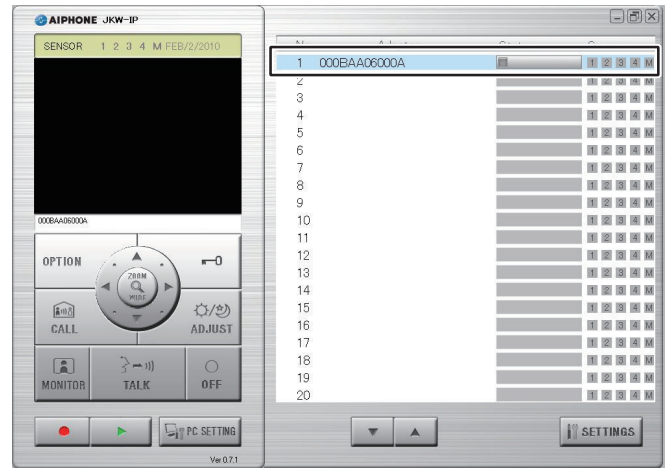
7. Click [OK].

- The Adaptor Registration window closes, and the IP Video Intercom Adaptor is registered.



- If the check mark is removed, the entered information is not remembered.

- When the IP Video Intercom Adaptor registration is complete, the name of the IP Video Intercom Adaptor is displayed in the [Adaptor] column and an icon (gray) is displayed in the [Status] column.



**MEMO**

- To make Adaptor settings, you need to enable SSL 3.0 from Internet Options - Advanced in Internet Explorer 6.0 and later.
- When connecting the IP Video Intercom Adaptor to a computer directly, use the Ethernet crossover cable.

## 2-2 Logging in

Administrator

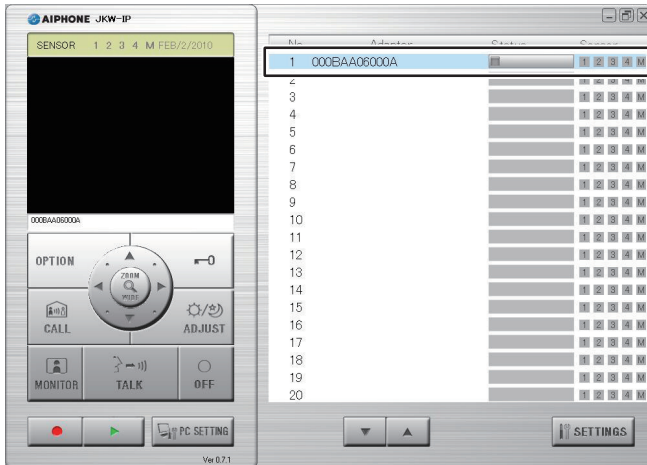
User

To modify IP Video Intercom Adaptor settings, you first need to login.

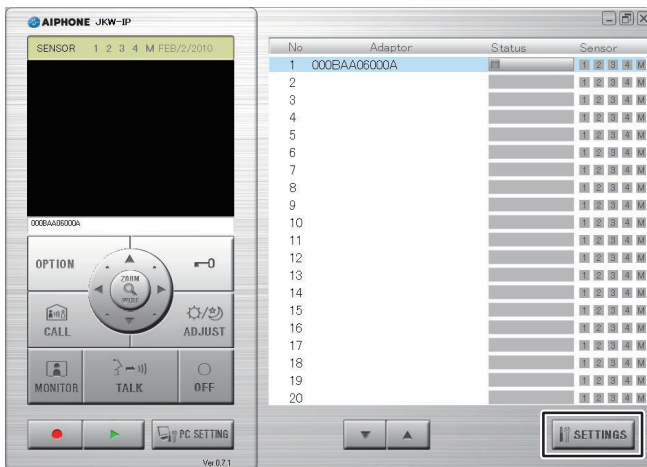
**MEMO** • Since you are not registered as a User before setting up, you can only login as the Administrator.

You can login as the "Administrator" or a "User". Setting items are restricted depending on which you use to login. Login using the following method.

1. Start up the PC Application, and select an optional "Adaptor" from the Expanded Window.



2. Click [SETTINGS].



**MEMO** • If the security warning and virus check program warning screens are displayed during start up, please approve them.



- Login is complete, and the User Settings window is displayed.
- Administrator / User are differentiated by the ID entered.

**MEMO** • If the "Status" display is not displayed, the IP Video Intercom Adaptor is not "connected". Select the relevant IP Video Intercom Adaptor, right-click, and then select "Connect" from the menu displayed to connect the IP Video Intercom Adaptor.

- If the check mark has been removed from "Remember above information" in the Adaptor Registration window, you need to enter the registration information again. See "Registering the IP Video Intercom Adaptor" **P.15** for more details.
- If no operations are performed for a set amount of time, a timeout is automatically generated. When an operation is performed, the message "The session has been expired. Please login." is displayed. Please login again.
- If the wrong Password is entered for a registered IP Video Intercom Adaptor, you need to enter the ID and Password.



## 2-3 Administrator Settings

Various Administrator settings for the IP Video Intercom Adaptor can be made from the Administrator Settings window while logged in as the Administrator.

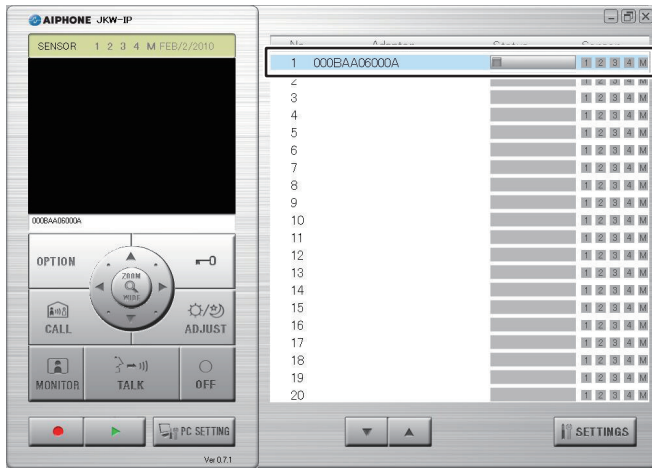
**MEMO** • You cannot change settings for multiple IP Video Intercom Adaptors at the same time. Make various settings for each IP Video Intercom Adaptor.

The following settings come under Administrator Settings.

Setting Item	Reference
Administrator Registration	<b>P.18</b>
User Registration	<b>P.19</b>
Email Setting (Adaptor)	<b>P.20</b>
Sensor input / Option output Settings	<b>P.21</b>
Network Settings	<b>P.23</b>
Log Downloading/Firmware Update	<b>P.27</b>

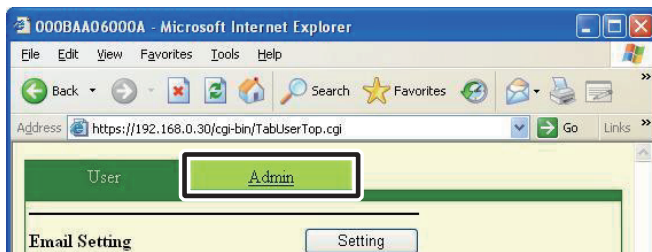
Use the following method to display the Administrator Settings window.

1. After starting up the PC Application, select an optional "Adaptor", and then login as the Administrator.
  - The User Settings window is displayed.



**MEMO** • See "Logging in" for more details on logging in. **P.17**

2. Click the [Admin] tab.
  - The Administrator Settings window is displayed.



**MEMO** • You cannot select the [Admin] tab when logged in as a User.

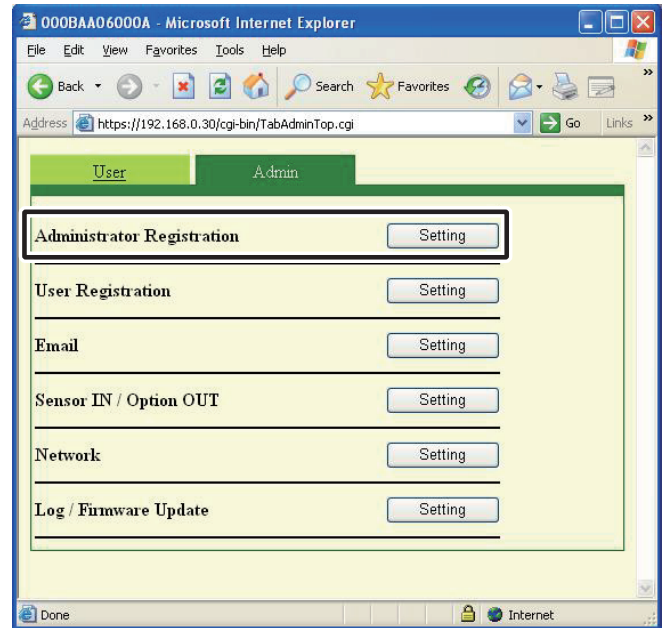
### 2-3-1 Administrator Registration

In Administrator Registration, you can change the Administrator ID and Administrator Password. The default settings are - Administrator ID: "aiphone" and Administrator Password: "aiphone".

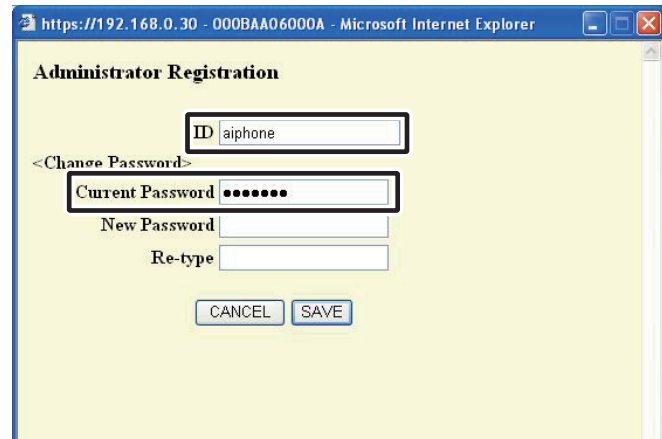
**!** We recommend changing the default password.

**MEMO** • If you are logged in as a User, you cannot perform Administrator Registration.

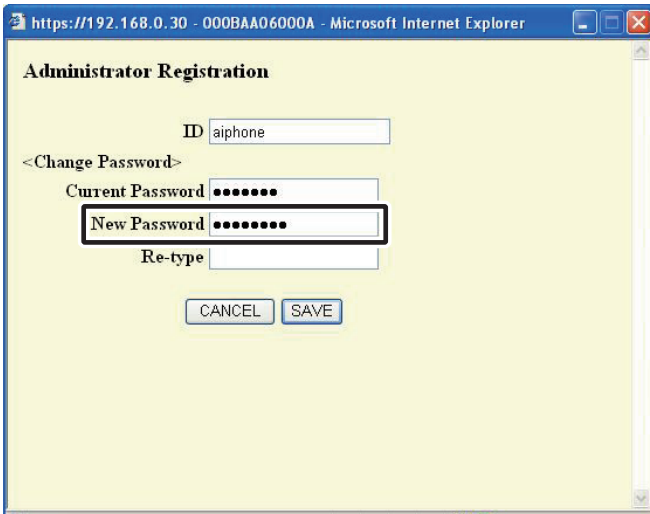
1. Click the [Setting] button of "Administrator Registration" from the Administrator Settings window.
  - The Administrator Registration window is displayed.



2. Enter the ID and the Current Password.
  - You can enter up to 16 single-byte alphanumeric characters for the ID.

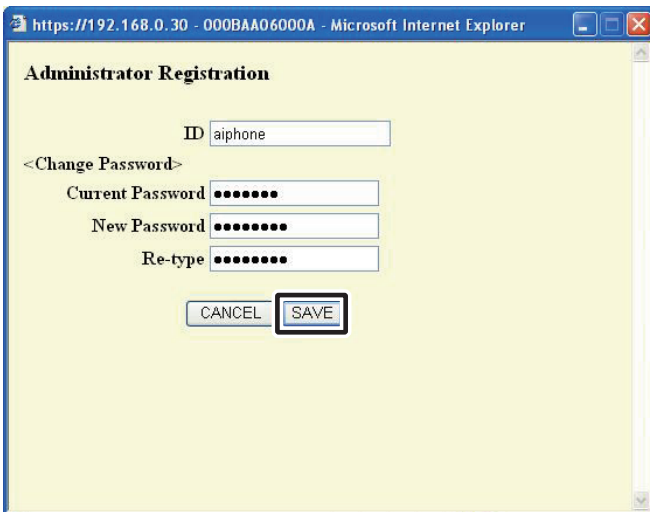


3. Enter a password in New Password.
  - You can enter up to 16 single-byte alphanumeric characters for the password.



4. Enter the new password again in the "Re-type" field as confirmation.
5. Click [SAVE].

• "[Administrator Registration] Setting has been saved." is displayed, the entered ID and new password are set, and you are returned to the Administrator Settings window.



• When you have changed the ID or password Change the ID or password in "Registering the IP Video Intercom Adaptor" P.15 to the same ID or password.

**MEMO**

- Setting operations are canceled if you click [CANCEL], and you are returned to the Administrator Settings window.
- If you forget the registered ID or password, press the default setting switch of the IP Video Intercom Adaptor for 5 seconds or more to return the settings to what they were at the time of shipping.

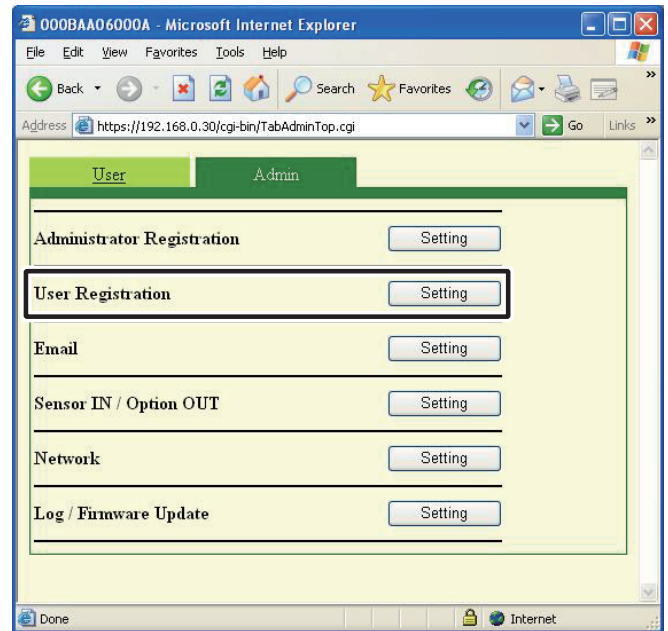
## 2-3-2 User Registration

Users other than the Administrator can be registered to allow them to use the IP Video Intercom Adaptor. Enter the User ID and User Password in User Registration.

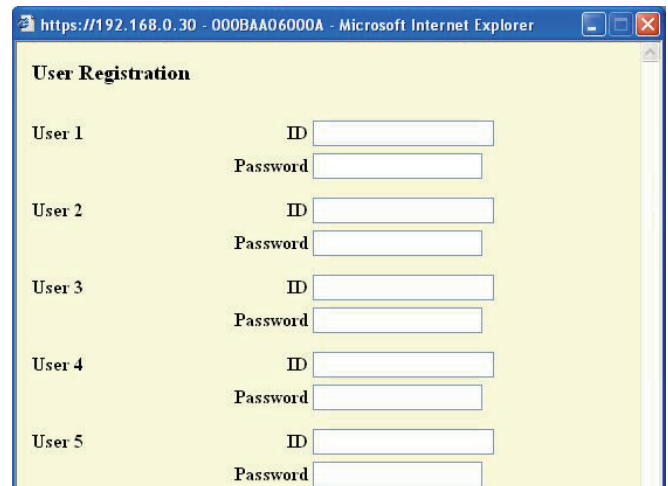
**MEMO**

- If you are logged in as a User, you cannot perform User Registration.

1. Click the [Setting] button of "User Registration" from the Administrator Settings window.
  - The User Registration window is displayed.

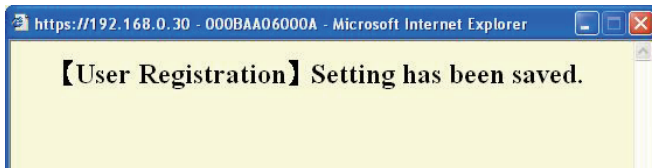


2. Enter the User's ID and Password.
  - You can register up to 9 users.



### 3. Click [SAVE].

- "[User Registration] Setting has been saved." is displayed, and you are returned to the Administrator Settings window.



- MEMO**
- Setting operations are canceled if you click [CANCEL], and you are returned to the Administrator Settings window.
  - All settings are returned to their defaults if you press the IP Video Intercom Adaptor default setting switch for 5 seconds or more.

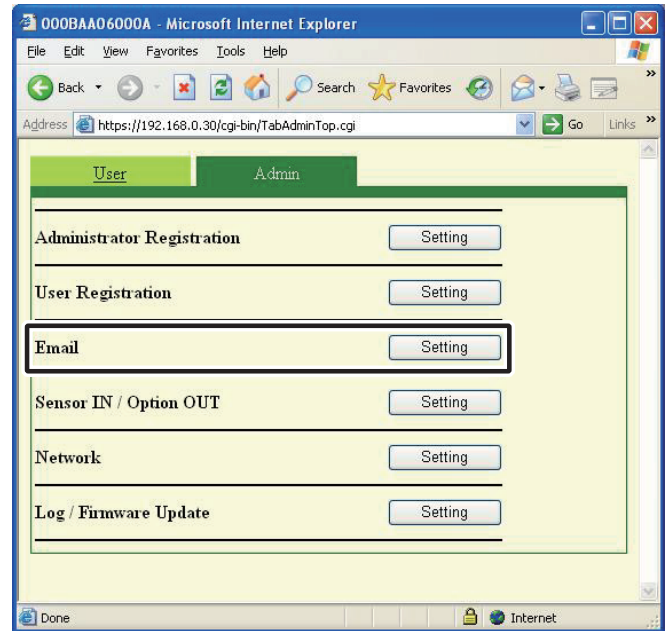
### 2-3-3 Email Setting (Adaptor)

In Email Setting, you can set information on the origin of the sent Email.

- MEMO**
- If you are logged in as a User, you cannot perform Email Setting.
  - Prepare an Email account for the IP Video Intercom Adaptor beforehand.

#### 1. Click the [Setting] button of "Email" from the Administrator Settings window.

- The Email Setting window is displayed.



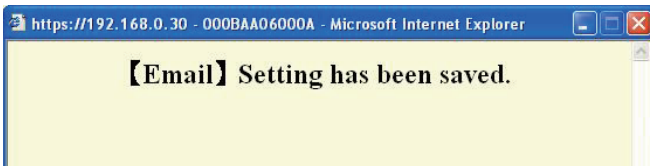
#### 2. Enter information for the "Adaptor Email Address", "SMTP Server", "(Email) login ID", "SMTP Password", and "SMTP Server Port" based on your Email account information.

- MEMO**
- The default SMTP Server Port setting is "465".
  - See **P.53** for the characters and symbols that can be used.



### 3. Click [SAVE].

- "[Email] Setting has been saved." is displayed, the entered Email address is set, and you are returned to the Administrator Settings window.



- MEMO**
- Setting operations are canceled if you click [CANCEL], and you are returned to the Administrator Settings window.
  - All settings are returned to their defaults if you press the IP Video Intercom Adaptor default setting switch for 5 seconds or more.

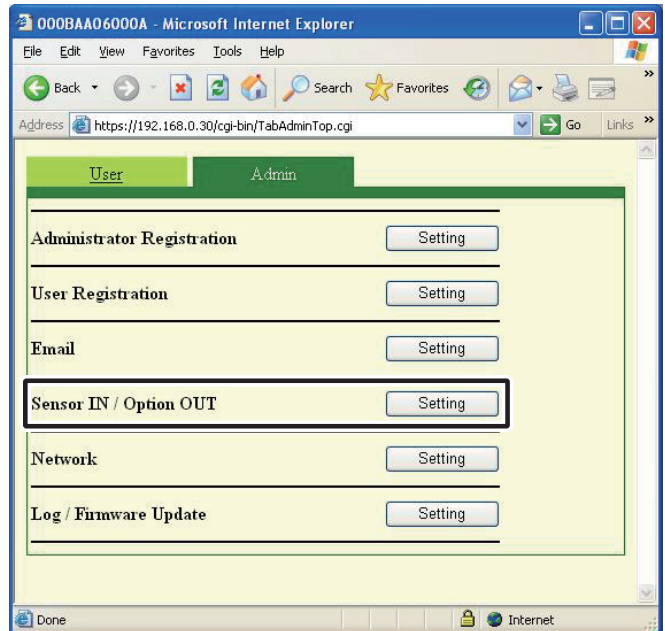
## 2-3-4 Sensor input / Option output Settings

In Sensor input / Option output Settings, you can set the Sensor input detection method, and select the Option output signal output duration. Sensor input detects the N.C. contact input for "N.C." and detects the N.O. contact input for "N.O.". The default settings are - Sensor input: "N.O.", and Option output: "3 seconds".

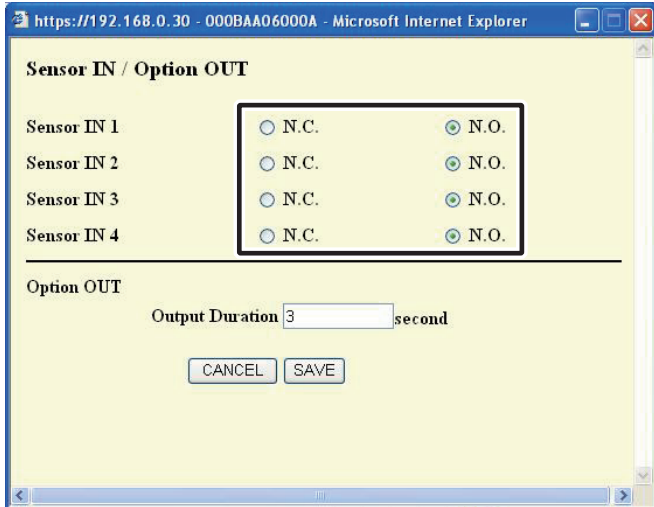
- MEMO**
- If you are logged in as a User, you cannot make Sensor input / Option output settings.

### 1. Click the [Setting] button of "Sensor IN / Option OUT" from the Administrator Settings window.

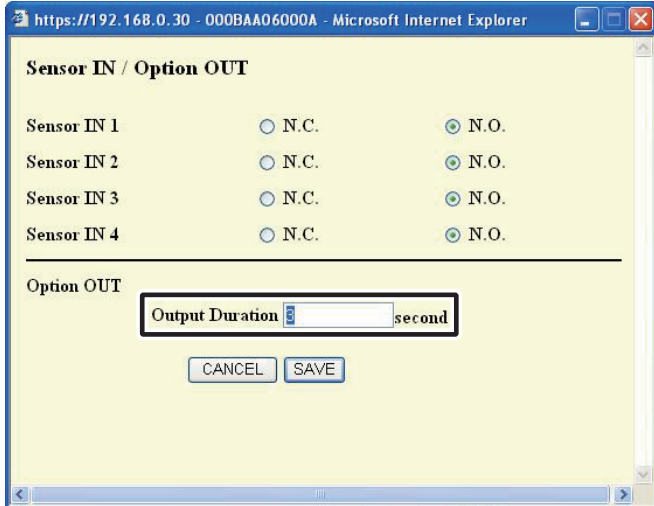
- The Sensor IN / Option OUT Setting window is displayed.



2. Select Sensor IN settings between 1 and 4 and make optional settings.



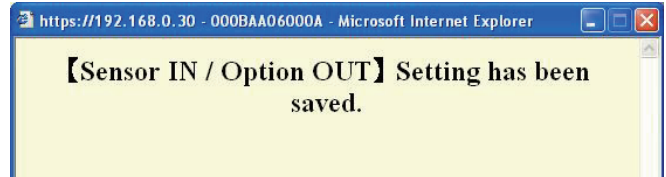
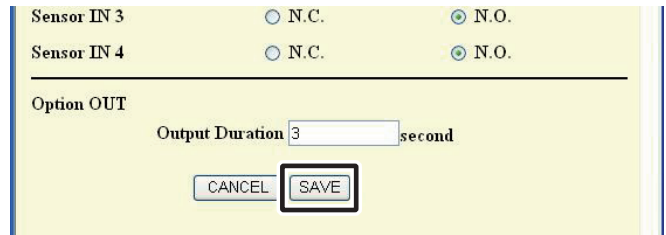
3. Enter the Output Duration for Option OUT.



- Set the Output Duration to between 0 and 600 seconds.
- When set to 0 seconds, it is only output when the "OPTION" button is clicked.

4. Click [SAVE].

- "[Sensor IN / Option OUT] Setting has been saved." is displayed, the Sensor input / Option output are set, and you are returned to the Administrator Settings window.




- MEMO**
- Setting operations are canceled if you click [CANCEL], and you are returned to the Administrator Settings window.
  - All settings are returned to their defaults if you press the IP Video Intercom Adaptor default setting switch for 5 seconds or more.

## 2-3-5 Network Settings

The following 6 settings come under Network Settings.

- Connection Settings
- Connection Port, Audio Port, Video Port, and Web Port Settings
- Update Encryption Key File
- Adaptor Name Settings
- Adaptor Language Settings
- Video Setting

**MEMO**

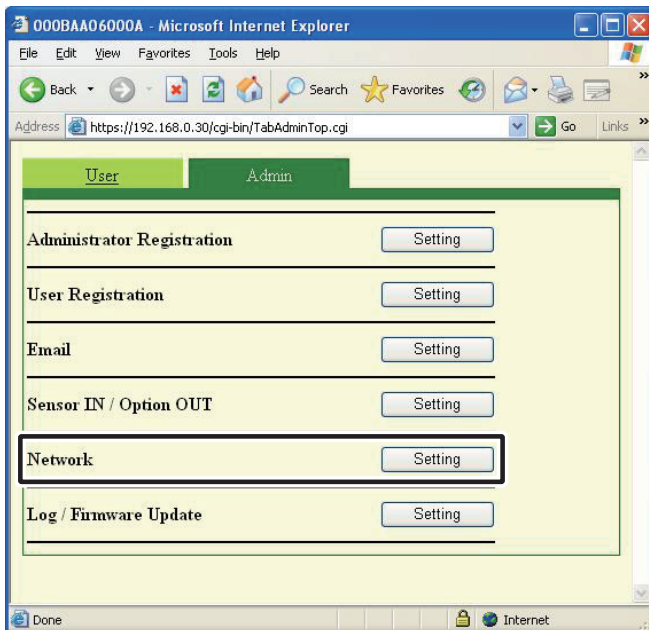
- If you are logged in as a User, you cannot make Network Settings.
- Reboot the IP Video Intercom Adaptor if you make Network Settings changes. If you do not reboot, settings for the IP Video Intercom Adaptor are not changed even though the settings for the PC Application have been changed.
- After initialization, operation of PC application is invalid for approximately 5 min. Either wait 5 min or perform "Disconnect" and "Connect" of corresponding adaptor in PC application.
- When updating the Encryption Key File, you need to download the Encryption Key and make settings for all PC Applications. See "Downloading Encryption Key" for more details. 

### Displaying the Network Settings window

You can make various settings from the Network Settings window.

1. Click the [Setting] button of "Network" from the Administrator Settings window.

- The Network Settings window is displayed.

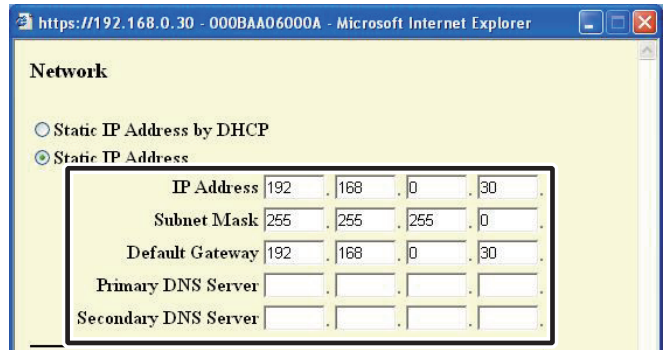


## Connection Settings

You can change the Static IP Address setting for the IP Video Intercom Adaptor. The default settings are - IP Address: "192.168.0.30", Subnet Mask: "255.255.255.0", and Default Gateway: "192.168.0.30".

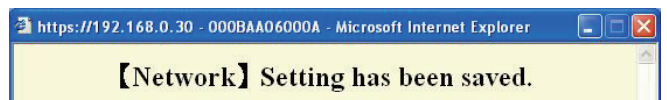
**MEMO** • Contact your Administrator for information on Static IP addresses.

1. Select Static IP Address and enter the "IP Address", "Subnet Mask", "Default Gateway", "Primary DNS Server", and "Secondary DNS Server".



2. Click [SAVE].

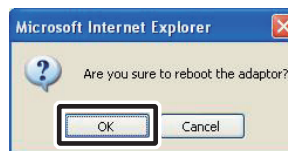
- "[Network] Setting has been saved." is displayed, and the Reboot Confirmation dialog is displayed.



**MEMO** • Setting operations are canceled if you click [CANCEL], and you are returned to the Administrator Settings window.

3. Click [OK].

- [System is initializing. Please wait for a while. Elapsed Time XX second.] is displayed, and the IP Video Intercom Adaptor is rebooted. It takes about 100 seconds to reboot.



- The STATUS indicator blinks. When the STATUS indicator changes to lit, rebooting is complete.
- You can also reboot with the [Reboot] button.

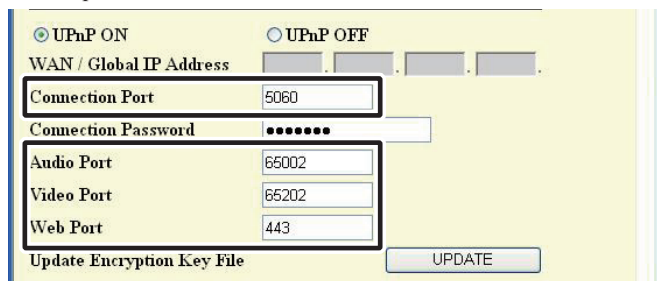
**MEMO** • All settings are returned to their defaults if you press the IP Video Intercom Adaptor default setting switch for 5 seconds or more.

- \* You need to set the router to acquire a Static IP address with DHCP. Depending on the router, some models may not have a setup function.

### Connection Port, Audio Port, Video Port, and Web Port Settings

You can change the settings for Connection Port, Audio Port, Video Port, and Web Port numbers. The default setting numbers are - Connection Port: "5060", Audio Port: "65002", Video Port: "65202", and Web Port: "443".

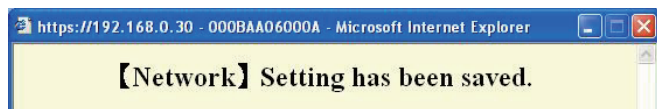
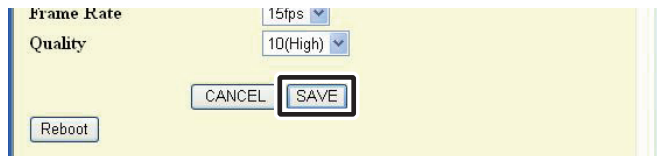
1. Enter the "Connection Port" number, "Audio Port" number, "Video Port" number, and "Web Port" number.
  - For Global, if it cannot be automatically set with UPnP, select UPnP OFF and, after setting the router, enter the WAN / Global IP Address.
  - For Global, it may be necessary to change ports when you are using multiple IP Video Intercom Adaptors or PC Applications. Please check our homepage at <http://www.aiphone.net> for more details.



- For the router setting information, see the Operation Manual supplied with the router.

2. Click [SAVE].

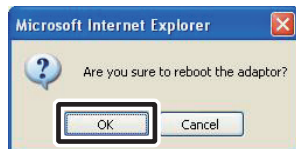
- "[Network] Setting has been saved." is displayed, and the Reboot Confirmation dialog is displayed.



**MEMO** • Setting operations are canceled if you click [CANCEL], and you are returned to the Administrator Settings window.

3. Click [OK].

- [System is initializing. Please wait for a while. Elapsed Time XX second.] is displayed, and the IP Video Intercom Adaptor is rebooted. It takes about 100 seconds to reboot.



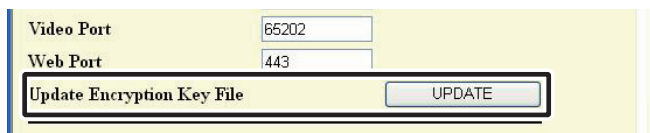
- The STATUS indicator blinks. When the STATUS indicator changes to lit, rebooting is complete.
- You can also reboot with the [Reboot] button.

**MEMO** • All settings are returned to their defaults if you press the IP Video Intercom Adaptor default setting switch for 5 seconds or more.

### Update Encryption Key File

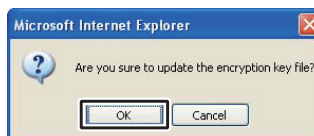
You can update the Encryption Key File.

1. Click [UPDATE].



- The Update Encryption Key File Confirmation dialog is displayed.

2. Click [OK].

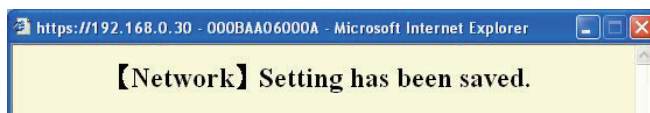
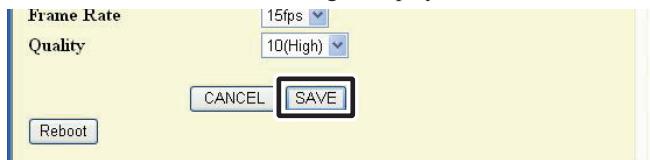


- "The encryption key file was updated." is displayed.



3. Click [SAVE].

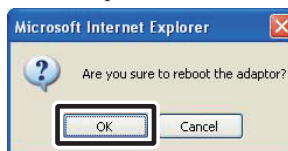
- "[Network] Setting has been saved." is displayed, and the Reboot Confirmation dialog is displayed.



**MEMO** • Setting operations are canceled if you click [CANCEL], and you are returned to the Administrator Settings window.

4. Click [OK].

- [System is initializing. Please wait for a while. Elapsed Time XX second.] is displayed, and the IP Video Intercom Adaptor is rebooted. It takes about 100 seconds to reboot.



- The STATUS indicator blinks. When the STATUS indicator changes to lit, rebooting is complete.
- You can also reboot with the [Reboot] button.

**MEMO** • All settings are returned to their defaults if you press the IP Video Intercom Adaptor default setting switch for 5 seconds or more.  
 • After updating the Encryption Key and make settings in all the PC Applications. See "Downloading Encryption Key" **P.32** for more details.

## Adaptor Name Settings

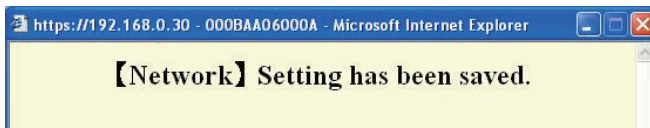
You can change the name of the IP Video Intercom Adaptor. The "MAC Address" is entered as the default.

### 1. Enter the "Adaptor Name".

**MEMO** • See **P.53** for the characters and symbols that can be used.

### 2. Click [SAVE].

- "[Network] Setting has been saved." is displayed, and the Reboot Confirmation dialog is displayed.



**MEMO** • Setting operations are canceled if you click [CANCEL], and you are returned to the Administrator Settings window.

### 3. Click [OK].

- [System is initializing. Please wait for a while. Elapsed Time XX second.] is displayed, and the IP Video Intercom Adaptor is rebooted. It takes about 100 seconds to reboot.



- The STATUS indicator blinks. When the STATUS indicator changes to lit, rebooting is complete.
- You can also reboot with the [Reboot] button.

**MEMO** • If a name is not set, the MAC Address is used as the Adaptor Name.  
• All settings are returned to their defaults if you press the IP Video Intercom Adaptor default setting switch for 5 seconds or more.

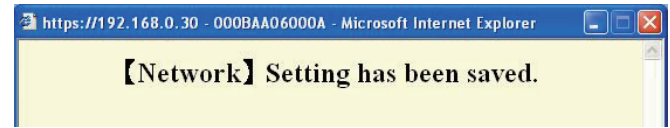
## Adaptor Language Settings

You can select the language used for the IP Video Intercom Adaptor Email transmissions, etc. from "English", "French", "Spanish", "German", "Dutch", "Italian", and "Japanese". The default setting is "English".

### 1. Click the drop-down menu button for "Adaptor Language", and then select the language.

### 2. Click [SAVE].

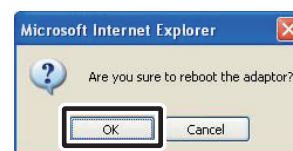
- "[Network] Setting has been saved." is displayed, and the Reboot Confirmation dialog is displayed.



**MEMO** • Setting operations are canceled if you click [CANCEL], and you are returned to the Administrator Settings window.

### 3. Click [OK].

- [System is initializing. Please wait for a while. Elapsed Time XX second.] is displayed, and the IP Video Intercom Adaptor is rebooted. It takes about 100 seconds to reboot.



- The STATUS indicator blinks. When the STATUS indicator changes to lit, rebooting is complete.
- You can also reboot with the [Reboot] button.

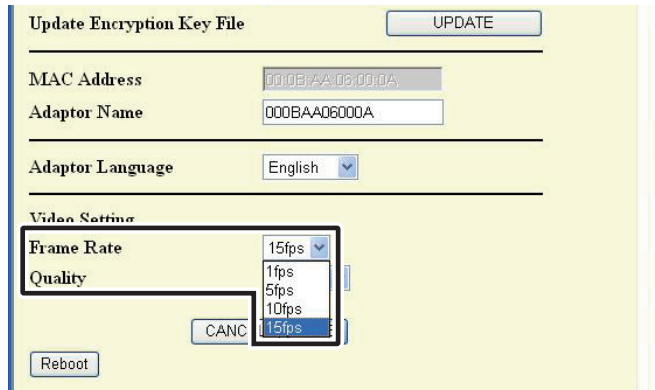
**MEMO** • All settings are returned to their defaults if you press the IP Video Intercom Adaptor default setting switch for 5 seconds or more.



## Video Setting

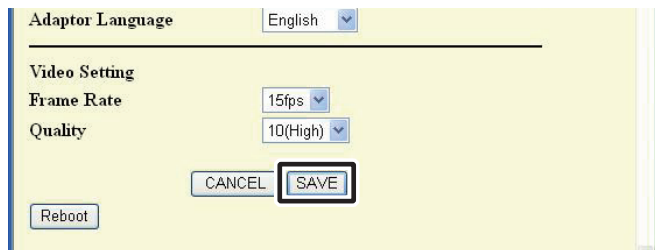
Select the Frame Rate from "1fps", "5fps", "10fps", and "15fps", and select the Quality from "1 (Low)" to "10 (High)". The default settings are - Frame Rate: "15fps", and Quality: "10 (High)".

1. Click the drop-down menu buttons from Video Setting for "Frame Rate" and "Quality", and make the settings.

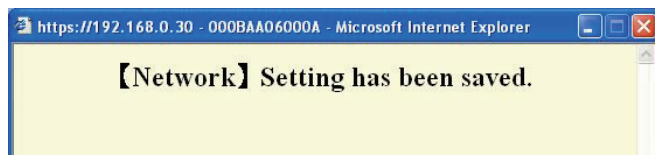


2. Click [SAVE].

- "[Network] Setting has been saved." is displayed, and the Reboot Confirmation dialog is displayed.

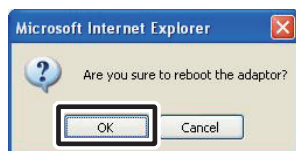


**MEMO** • Setting operations are canceled if you click [CANCEL], and you are returned to the Administrator Settings window.



3. Click [OK].

- [System is initializing. Please wait for a while. Elapsed Time XX second.] is displayed, and the IP Video Intercom Adaptor is rebooted. It takes about 100 seconds to reboot.



- The STATUS indicator blinks. When the STATUS indicator changes to lit, rebooting is complete.
- You can also reboot with the [Reboot] button.

**MEMO**

- All settings are returned to their defaults if you press the IP Video Intercom Adaptor default setting switch for 5 seconds or more.
- Raising the Frame Rate from 1fps to 15fps gives you a smoother image quality. Also, raising the Quality from 1 to 10 gives you a finer image. However, raising both Frame Rate and Quality may place a heavy load on the network.

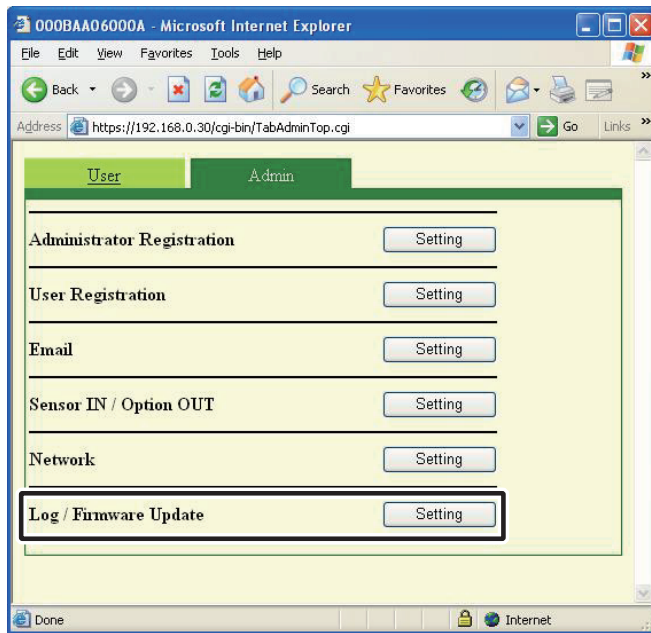
### 2-3-6 Log Downloading/Firmware Update

#### Log Downloading

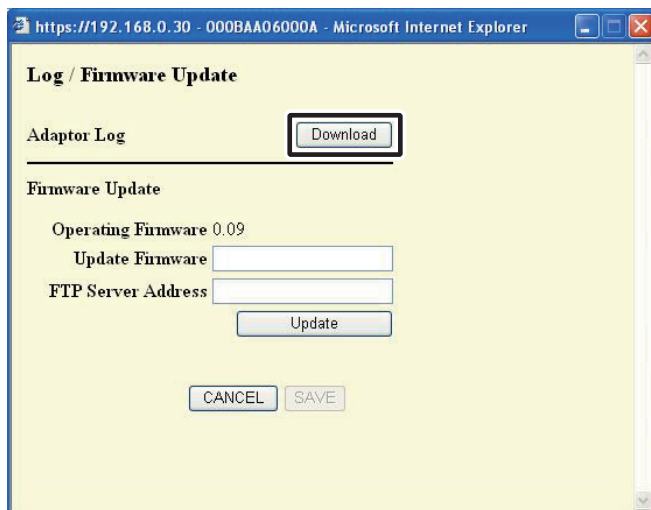
You can acquire an operations log from the IP Video Intercom Adaptor.

- MEMO**
- If you are logged in as a User, you cannot perform a Log Downloading/Firmware Update.
  - The IP Video Intercom Adaptor records the most recent 10 days worth of operations logs. When the recording capacity is exceeded, the logs are overwritten, starting from the log with the oldest recording date.

1. Click the [Setting] button of "Log/Firmware Update" from the Administrator Settings window.
  - The Log/Firmware Update window is displayed.

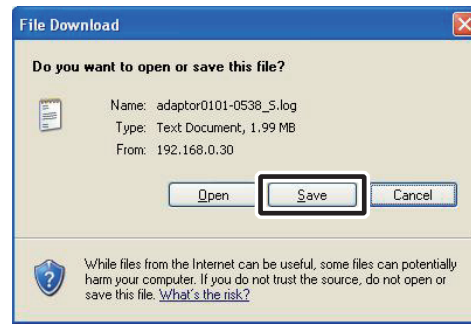


2. Click [Download] from "Adaptor Log".
  - The Log File Download dialog is displayed.

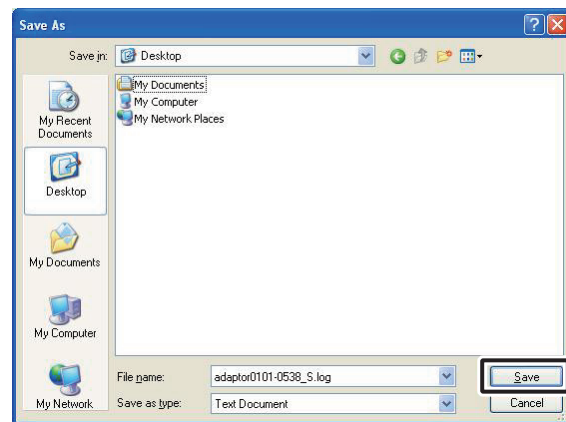


- MEMO**
- Downloading is canceled if you click [CANCEL], and you are returned to the Administrator Settings window.

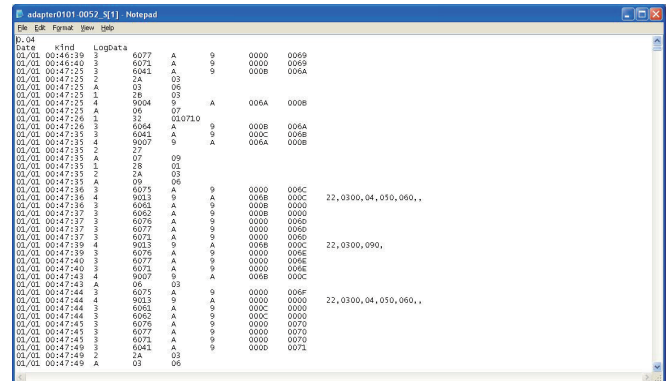
3. Click [Save].
  - The Save As dialog is displayed and you can give the file a name.



4. Select the target directory, and then click [Save].
  - You are returned to the Log/Firmware Update window.



#### Operations Log Example



- The IP Video Intercom Adaptor may not operate correctly during log downloading.

## Firmware Update

To update the IP Video Intercom Adaptor firmware, you need to set the PC as a server beforehand and then save the firmware to be updated on the server.

You may also need to turn off the Windows Firewall and security software functions.


### Setting up an FTP Server

Select "Add or Remove Programs" from the computer's "Control Panel", and then click "Add/Remove Windows Components". Select "Internet Information Services (IIS)", and then click "Details".

Select "File Transfer Protocol (FTP) Service", and then click "OK".

On the following page, click "Next".

FTP Server setup is complete.

 The Internet Information Services are not available for Windows XP Home Edition. Please check our homepage at <http://www.aiphone.net>.

### Downloading Updated Firmware Data

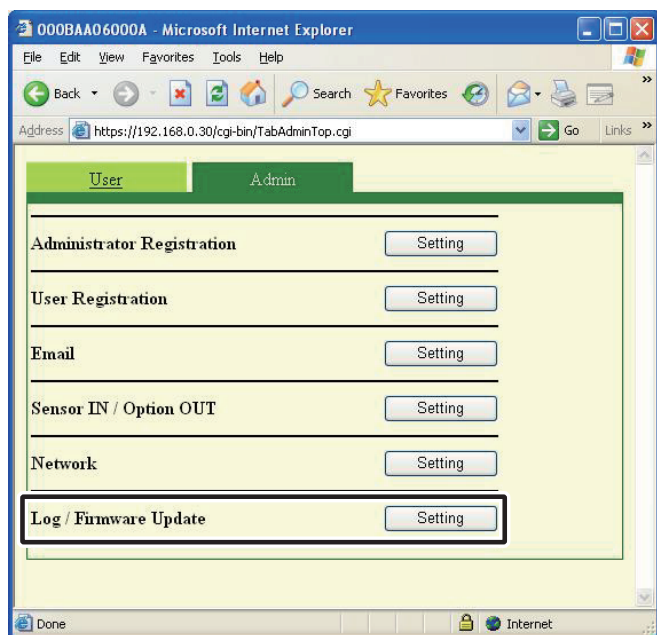
Please access our homepage at <http://www.aiphone.net/> and download the firmware data.

For the download procedure, see the instructions on our homepage.

Save the downloaded data in the folder "C:\inetpub\ftproot" of the computer which has been set up as the FTP server.

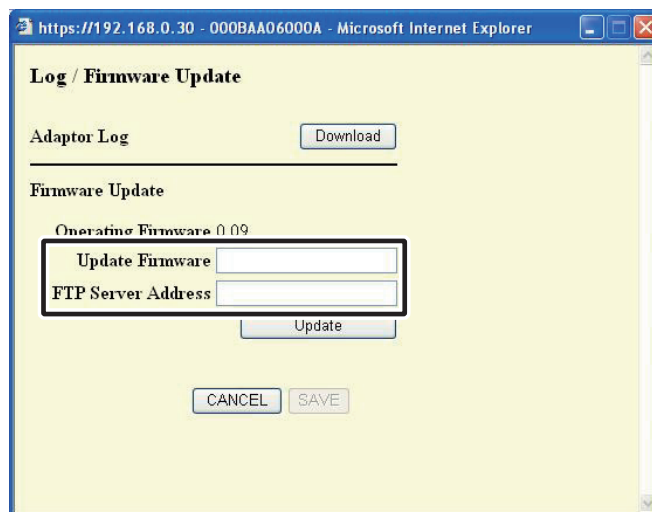
**1.** Click the [Setting] button of "Log/Firmware Update" from the Administrator Settings window.

• The Log/Firmware Update window is displayed.



**2.** Enter a version for Update Firmware and FTP Server Address, and then click [Update].

• The Update Confirmation dialog is displayed.



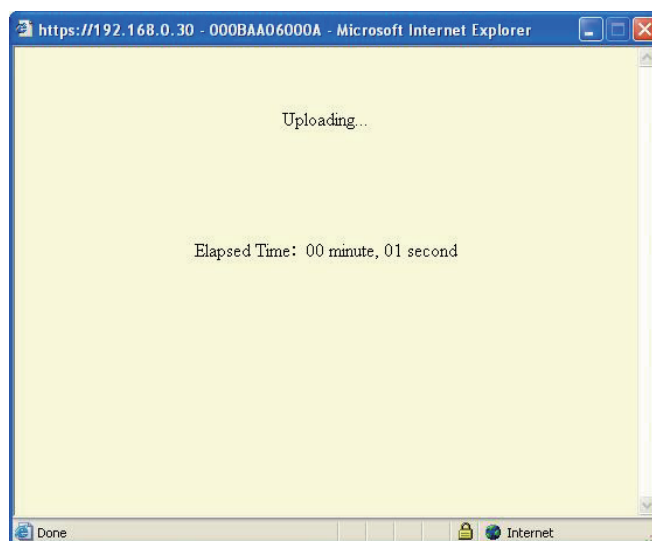
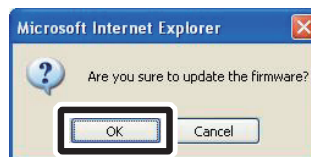
**MEMO**

- When entering the Update Firmware, please omit the periods ".". For example: If the version is "1.01", enter "101"
- For the FTP Server Address, enter the name of the server where the update file is saved. Normally, this is the IP Address of the user's computer.

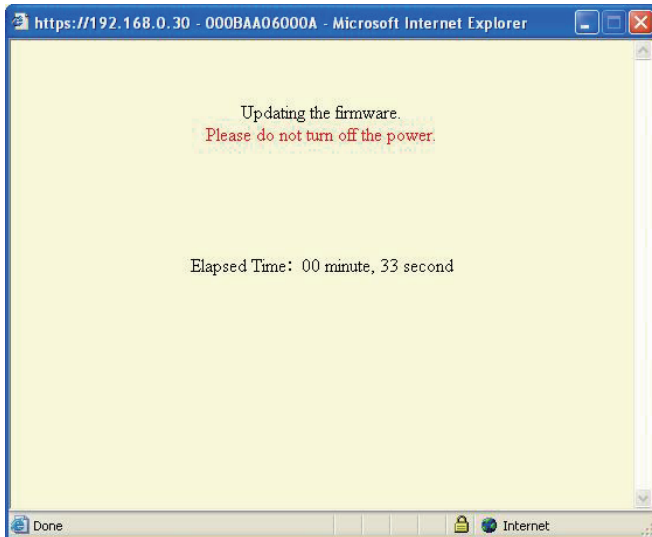
**3.** Click [OK].

• The update file is downloaded from the FTP server. It takes several seconds to download.

• The Update window is displayed, and the update begins.







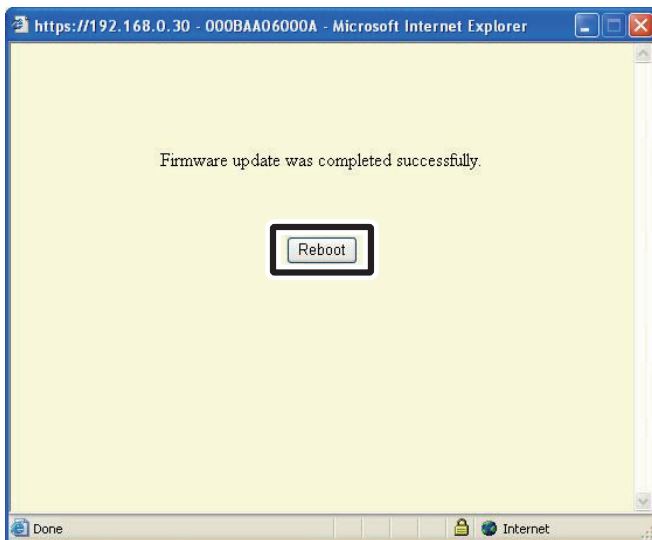
- The downloaded update file is written to the circuit board. Writing takes about 2 minutes.
- "Firmware update was completed successfully." is displayed, and the update process is complete.

**MEMO** • Do not turn off the power while the firmware is being written. If the power is turned off while it is writing, the product will malfunction.

#### 4. Click [Reboot].

- [System is initializing. Please wait for a while. Elapsed Time XX second.] is displayed, and the IP Video Intercom Adaptor is rebooted. It takes about 100 seconds to reboot.
- When the reboot is complete, the Administrator Settings window is displayed.

**MEMO** • If the update fails, the [Return] button is displayed. Click [Return] and go back to 2.



**MEMO** • Depending on the computer and the OS environment, the screen displays may differ.

⚠ The corresponding IP Video Intercom Adaptor does not operate during firmware updating.

## 2-4 Registering IP Video Intercom Adaptor Users

User

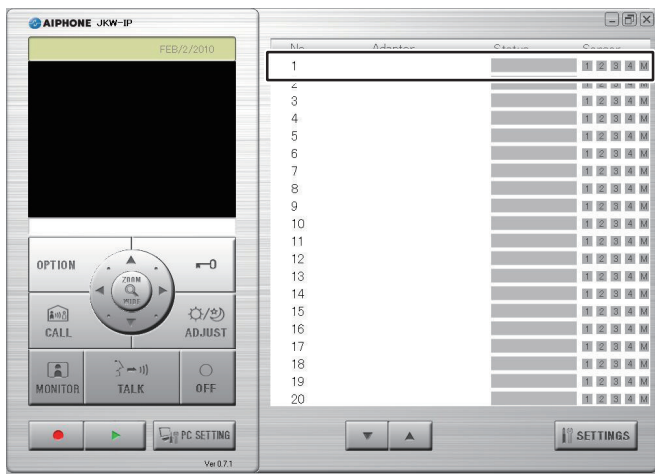
To enable a User (besides the Administrator) to use the IP Video Intercom Adaptor, you need to install the PC Application into the user's computer, and register the user information. See [P.10](#) for the PC Application installation procedure.

You can register up to 9 users to one IP Video Intercom Adaptor.

**MEMO** • Contact your Administrator for information about the IP Video Intercom Adaptor and details of users registered to the IP Video Intercom Adaptor.

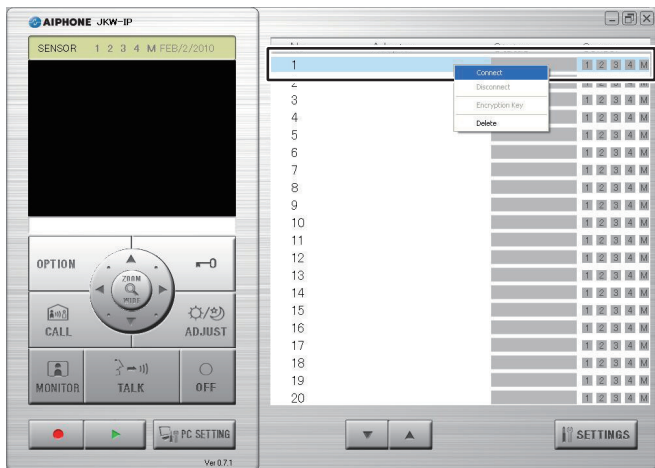
Use the following steps to register users to the IP Video Intercom Adaptor.

1. Start up the PC Application, and select an optional "Adaptor" from the Expanded Window.



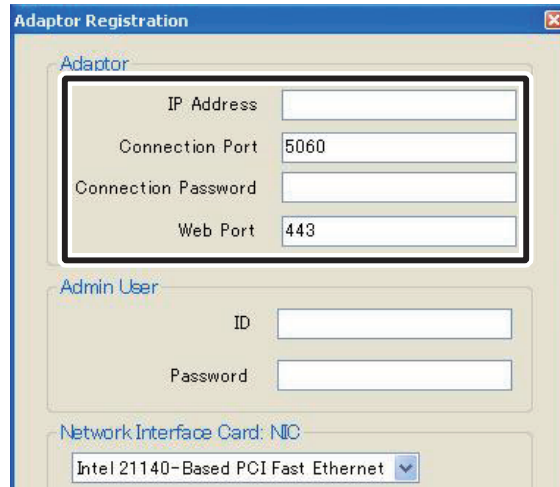
2. Select the number where you want to register the IP Video Intercom Adaptor, right-click, and then select "Connect" from the menu displayed.

• The Adaptor Registration window is displayed.



3. Enter the unique IP Address, Connection Port, Connection Password, and Web Port for the registered IP Video Intercom Adaptor.

• Contact your Administrator beforehand for the IP Address, Connection Port, Connection Password, and Web Port to be entered. The default settings are - IP Address: "192.168.0.30", Connection Port: "5060", Connection Password: "aiphone", and Web Port: "443".



• For Global, enter the router's Global IP Address as the IP Address.  
 • If you do not know your Local IP Address, run "JKW-IP\_IP\_SEARCH.exe" from the CD-ROM supplied, and then click the "Search" button. It searches for the IP Video Intercom Adaptor on the network, and then displays the MAC Address and the IP Address.

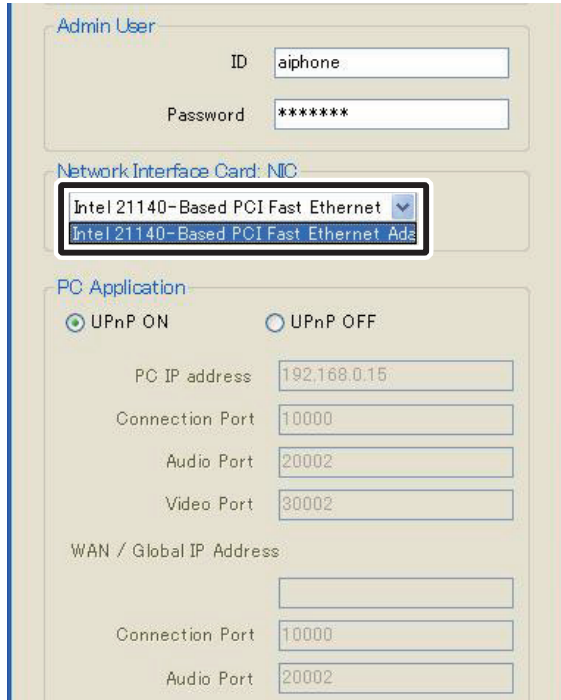
4. Enter the User's ID and Password.

• The ID and Password registered previously in User Registration [P.19](#) of Administrator Settings are required.



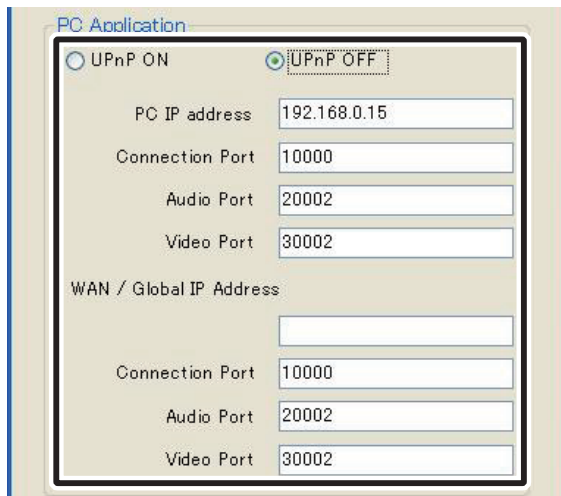
**MEMO** • You need a Static Global IP Address for the Global IP Address. It does not support DDNS service.

5. Select the optional NIC (Network Interface Card) being used.



6. For Global, if it cannot be automatically set with UPnP, select UPnP OFF and, after setting the router, enter the following items.

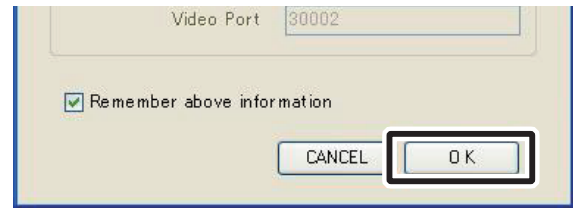
- If the router does not support UPnP, select UPnP OFF and enter the router information.
- For Local, and when it can be automatically set with Global, it is not necessary to enter the router information.



- For Global, it may be necessary to change ports when you are using multiple IP Video Intercom Adaptors or PC Applications. Please check our homepage at <http://www.aiphone.net> for more details.
- For the router setting information, see the Operation Manual supplied with the router.

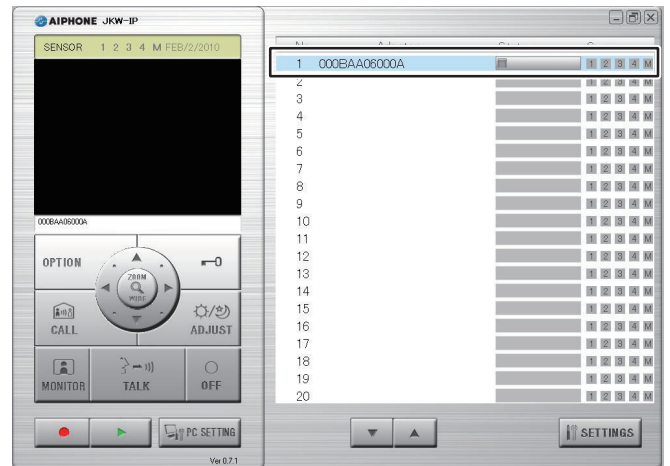
7. Click [OK].

- The Adaptor Registration window closes, and the IP Video Intercom Adaptor is registered.



- If the check mark is removed, the entered information is not remembered.

- When the IP Video Intercom Adaptor registration is complete, the name of the IP Video Intercom Adaptor is displayed in the [Adaptor] column and an icon (gray) is displayed in the [Status] column.



**MEMO**

- To make Adaptor settings, you need to enable SSL 3.0 from Internet Options - Advanced in Internet Explorer 6.0 and later.
- When connecting the IP Video Intercom Adaptor to a computer directly, use the Ethernet crossover cable.

## 2-5 User Settings

Administrator User

User Settings for the PC Application can be made from the User Settings window while logged in as the Administrator or a User.

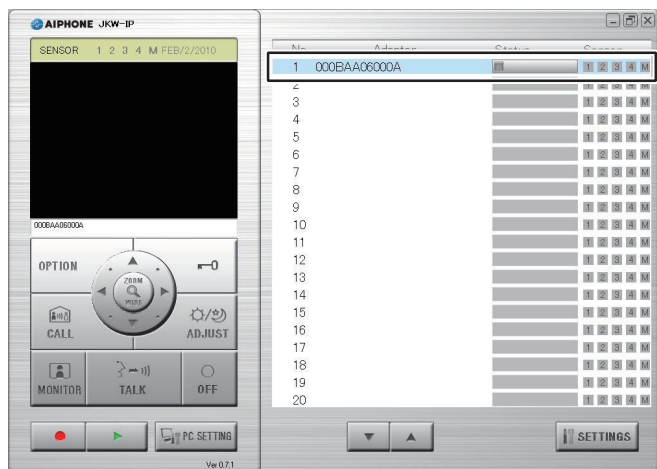
### 2-5-1 Downloading Encryption Key

To use the Door release and Option Output with the PC Application, you need to obtain the Encryption Key Files from each IP Video Intercom Adaptor beforehand and set them for the respective IP Video Intercom Adaptors with the PC Application.

Also, when the Administrator updates the Encryption Key, it needs to be reacquired and installed again.

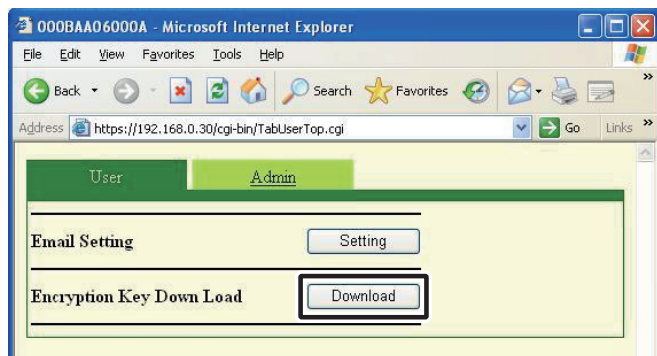
#### Downloading and Setting the Encryption Key File

1. After starting up the PC Application, select an optional "Adaptor", and then login as the Administrator or a User.
  - The User Settings window is displayed.



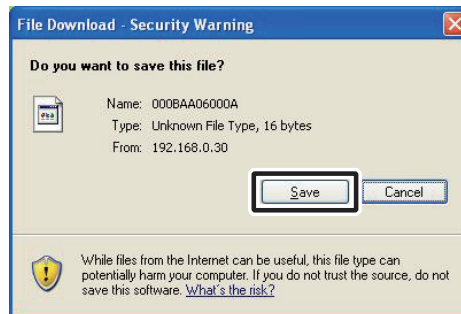
**MEMO** • See "Logging in" for more details on logging in.

2. Click [Download] of [Encryption Key Down Load] from the User Settings window.
  - The Encryption Key File Download screen is displayed.
  - The MAC Address for the IP Video Intercom Adaptor is displayed as the Encryption Key File name.



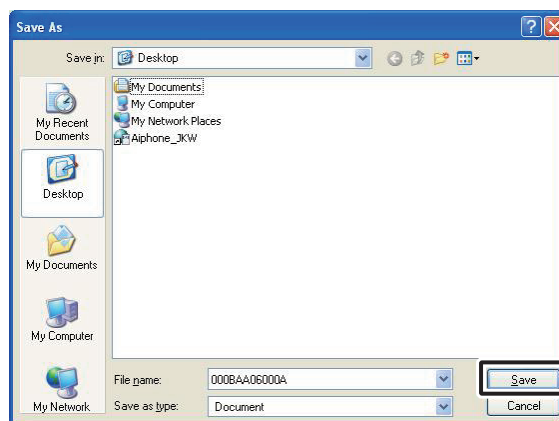
3. Click [Save].

- The Save As dialog screen is displayed and you can give the file a name.



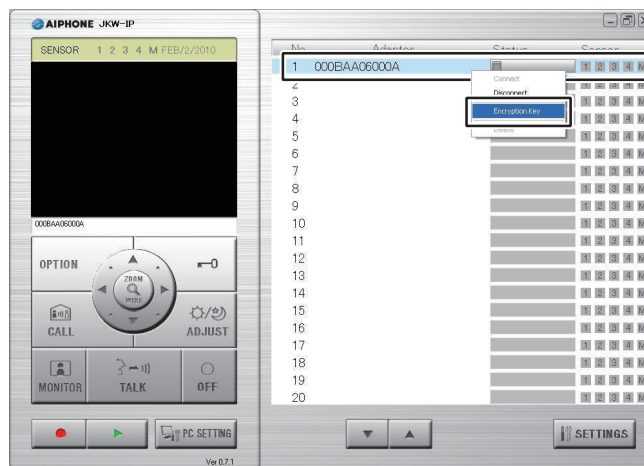
4. Select the target directory, and then click [Save].

- The Encryption Key File is saved, and you are returned to the User Settings window.

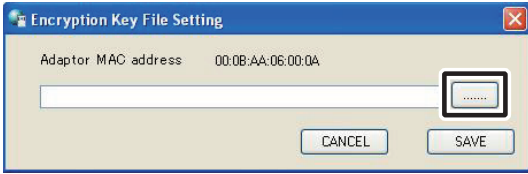


5. From the Expanded Window, after selecting an "Adaptor" from the list, right-click and select "Encryption Key" from the menu displayed.

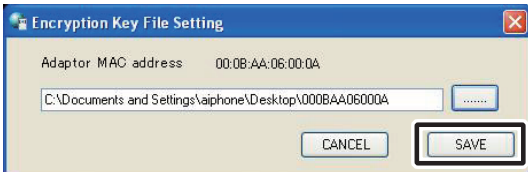
- The Encryption Key File Setting window is displayed.



- Select the Encryption Key File corresponding to the selected "Adaptor".



- Click [SAVE].
  - The Encryption Key is set, and you are returned to the Expanded Window.



**MEMO** • Setting operations are canceled if you click [CANCEL], and you are returned to the Expanded Window.

- When the Encryption Key setup is complete, the icon in the [Status] column changes from gray to blue.

- Carry out 1. to 7. for all IP Video Intercom Adaptors connected to the system.

**MEMO** • Even if the Encryption Key does not match, the Status display changes to blue. If this occurs, you cannot operate Door release or Options. Set the Key again after updating the Encryption Key File. See "Update Encryption Key File" **P.24** in Administrator Settings for details on updating the Encryption Key File.

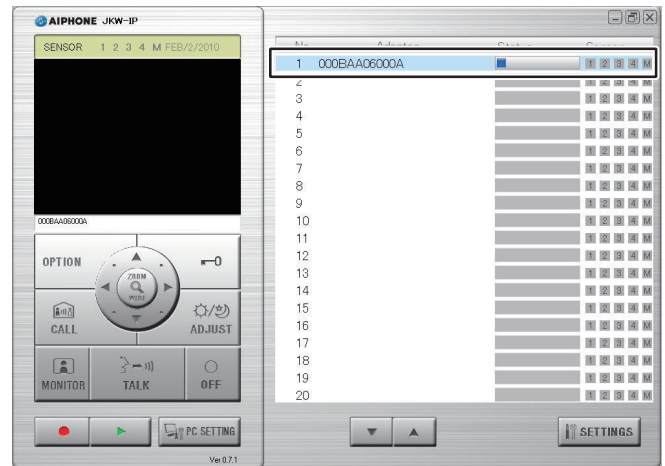
## 2-5-2 Email Setting

Various User Settings for the PC Application can be made from the User Settings window while logged in as the Administrator or a User.

**MEMO** • You cannot change settings for multiple IP Video Intercom Adaptors at the same time. Make various settings for each IP Video Intercom Adaptor.

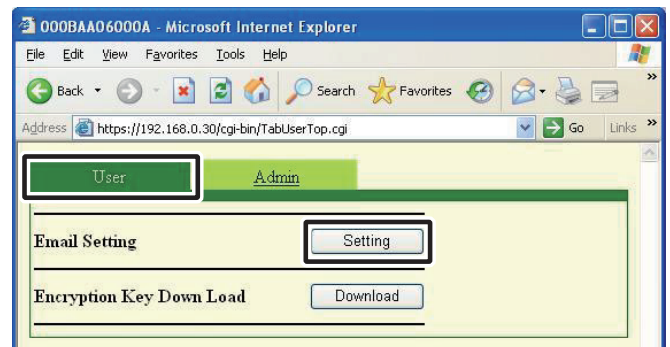
Use the following method to display the User Settings window.

- After starting up the PC Application, select an optional "Adaptor", and then login as the Administrator or a User.
  - The User Settings window is displayed.



**MEMO** • See "Logging in" for more details on logging in. **P.17**

- Click [Setting] of [Email Setting] from the User Settings window.





### Setting the Target Email Address and the Email Timing

Register the Email Address of the receiver to which a notification is to be sent when a Door Call, Sensor Detection, or System Start is detected.

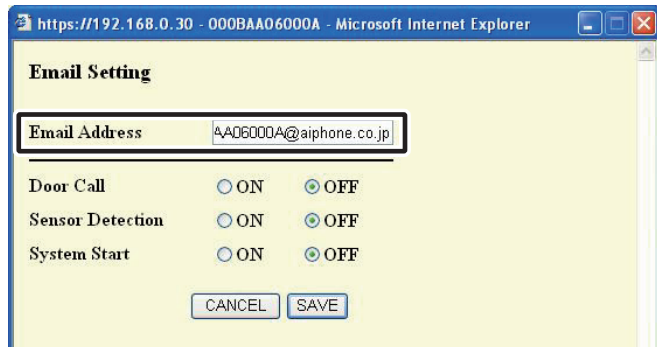
In the Email Timing settings, you can set whether or not Email is transmitted when Door Call, Sensor Detection, or System Start is detected.

- When Door Call is set to "ON", the snapshot displayed on the monitor at the time of the call is attached to the Email and sent. No Email is sent from the second call.
- When Sensor Detection is set to "ON", Email is sent when the sensor detection is activated.

**MEMO** • To send Emails from the IP Video Intercom Adaptor, the Administrator needs to make the [Email Setting] beforehand.

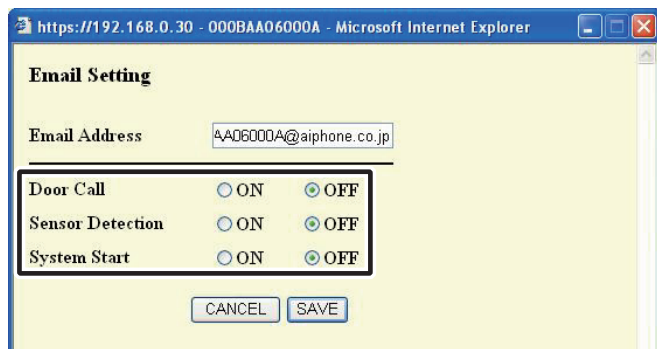
#### Setting the target Email Address

1. Enter an Email address in the "Email Address" field in the Email Setting window.



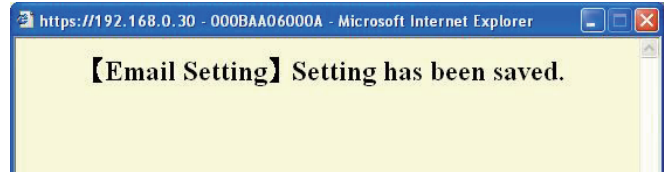
#### Email Timing Settings

2. Select the check box for the timing setting from the Email Setting window.



3. Click [SAVE].

- "[Email Setting] Setting has been saved." is displayed, the entered Email Address is set, and you are returned to the User Settings window.



**MEMO** • Setting operations are canceled if you click [CANCEL], and you are returned to the User Settings window.  
 • All settings are returned to their defaults if you press the IP Video Intercom Adaptor default setting switch for 5 seconds or more.

# 3 PC Application Settings

## 3-1 Setting the PC Application

Administrator

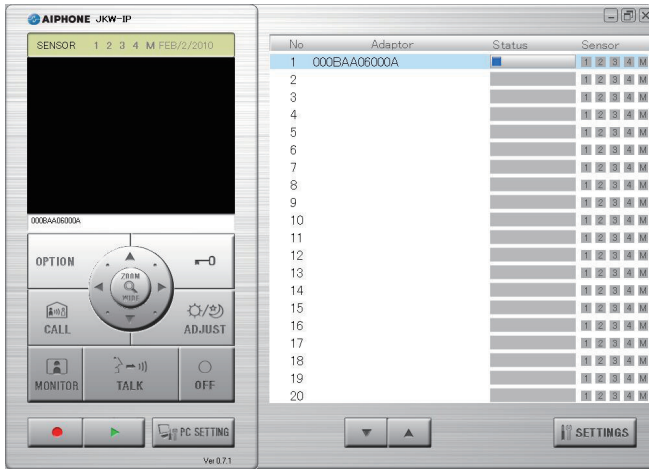
User

Various settings for the PC Application can be made from the PC Application Settings window.

Use the following method to display the PC Application Settings window.

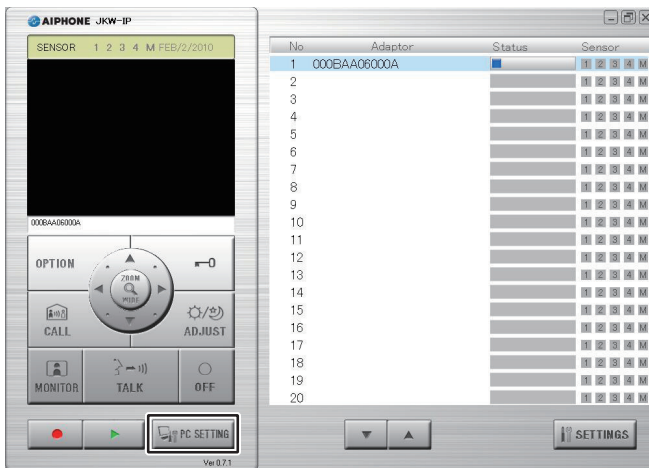
### 1. Starting up the PC Application

- The Expanded Window is displayed.



### 2. Click [PC SETTING].

- The PC Application Settings window is displayed.



### 3-1-1 Volume Settings

To adjust the volume, click the "Volume" tab from the PC Application Settings window to display the settings screen. The following 3 settings come under Volume Settings.

- Microphone Volume
- Speaker Volume
- Tone Volume

#### <<Note: Volume Adjustment>>

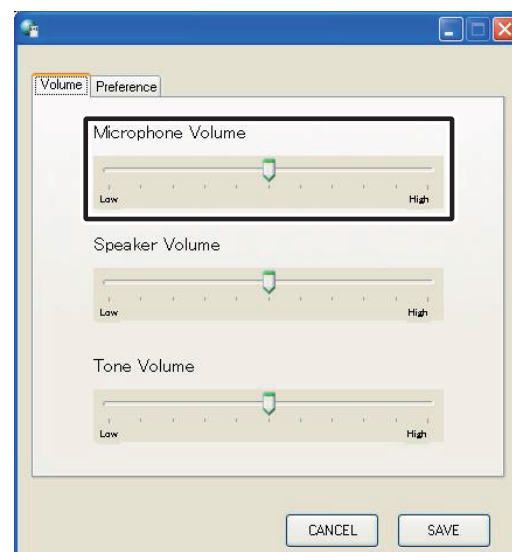
- When talking, if you cannot hear audio from the door station or the master monitor station even after turning up the Speaker Volume, try turning down the Microphone Volume little by little. (Because it uses a hands-free (VOX) system, if the Microphone Volume is too high, it might not switch to the receiver's side.)
- The Microphone Volume settings and the Speaker Volume settings are synchronized with the computer's settings. Please note that the communication volume is changed when you change the volume in "Sounds and Audio Devices Properties" from the computer.
- Depending on the computer's environment, the sound quality may be bad or communication may not be possible.

**CAUTION** Do not adjust the volume with your ear close to the speaker. A sudden increase in volume could damage your eardrum.

### Microphone Volume Settings

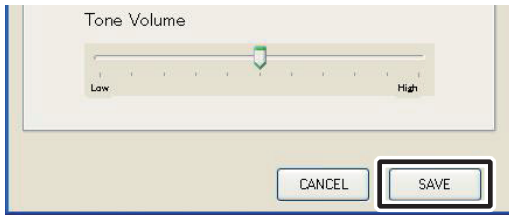
The Microphone Volume can be set.

1. Move the Microphone Volume slider left or right to set the optimum volume.



**2.** Click [SAVE].

- The Microphone Volume is set and the PC Application Settings window closes.



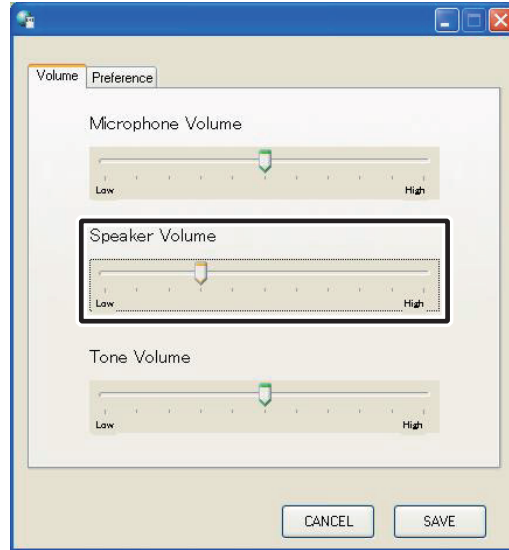
**MEMO**

- Setting operations are canceled if you click [CANCEL], and the PC Application Settings window closes.
- The Microphone Volume settings are synchronized with the computer's settings. For more information, see the Operation Manual supplied with your computer.

## Speaker Volume Settings

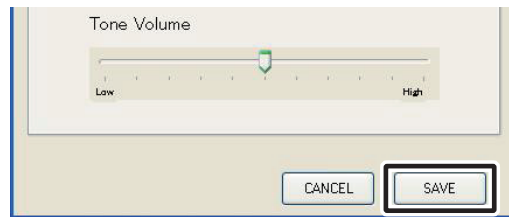
The Speaker Volume can be set.

**1.** Move the Speaker Volume slider left or right to set the optimum volume.



**2.** Click [SAVE].

- The Speaker Volume is set and the PC Application Settings window closes.



**MEMO**

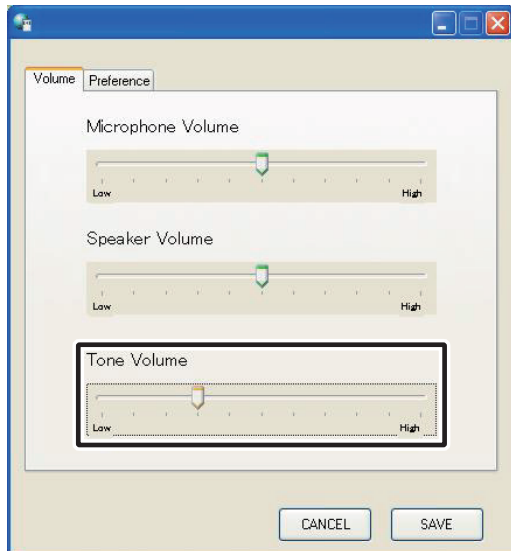
- Setting operations are canceled if you click [CANCEL], and the PC Application Settings window closes.
- The Speaker Volume settings are synchronized with the computer's settings. For more information, see the Operation Manual supplied with your computer.



## Tone Volume Settings

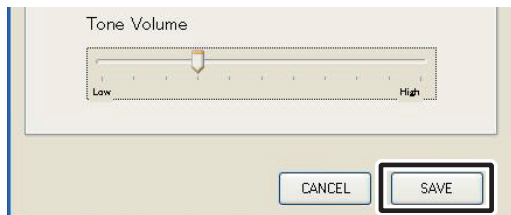
The Tone Volume can be set. It is linked to Call Tone and Sensor Detection Tone.

1. Move the Tone Volume slider left or right to set the optimum volume.



2. Click [SAVE].

- The Tone Volume is set and the PC Application Settings window closes.



**MEMO** • Setting operations are canceled if you click [CANCEL], and the PC Application Settings window closes.

## 3-1-2 Preference Settings

To adjust the Preference Settings, click the "Preference" tab from the PC Applications Settings window to display the settings screen.

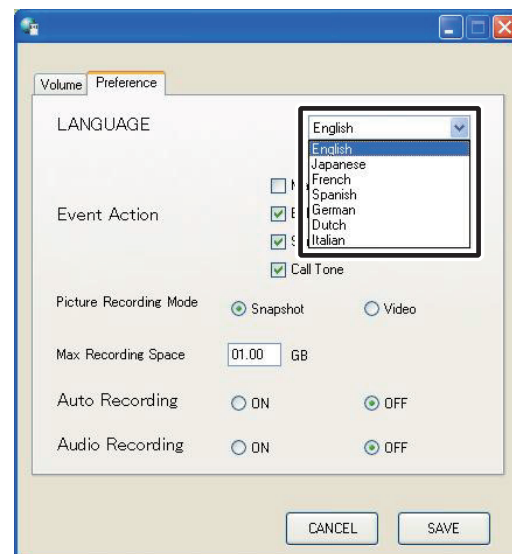
The following 6 settings come under Preference settings.

- LANGUAGE Settings
- Event Action Settings
- Picture Recording Mode Settings
- Max Recording Space Settings
- Auto Recording Settings
- Audio Recording Settings

### LANGUAGE Settings

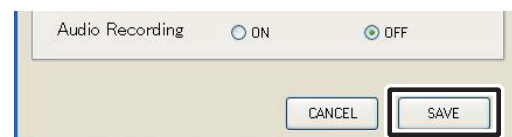
You can select the screen display language from "English", "French", "Spanish", "German", "Dutch", "Italian", and "Japanese". The default setting is "English".

1. Click the drop-down menu button for "LANGUAGE", and then select the language.



2. Click [SAVE].

- Saves the setting and closes PC application.

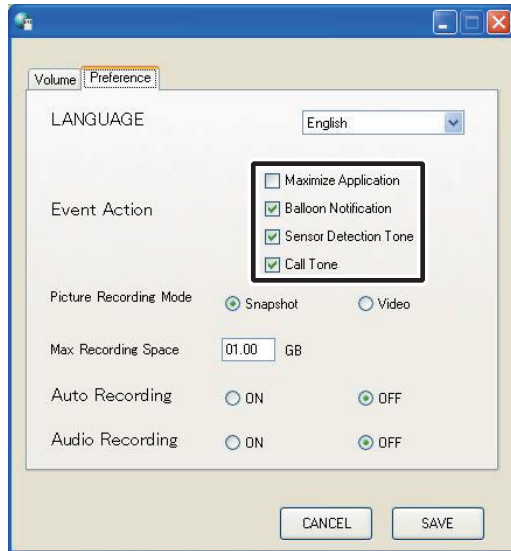


**MEMO** • Setting operations are canceled if you click [CANCEL], and the PC Application Settings window closes.  
• To apply the selected language, you need to restart the PC Application.

## Event Action Settings

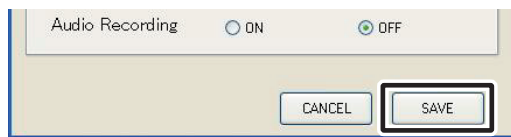
You can set Maximize Application (screen display), Balloon Notification, Sensor Detection Tone, and Call Tone to either ON or OFF. The default settings are - Maximize Application (screen display) only: "OFF", the other settings are all "ON".

1. Select Event Action and change the settings.



2. Click [SAVE].

- Event Action is set and the PC Application Settings window closes.



**MEMO** • Setting operations are canceled if you click [CANCEL], and the PC Application Settings window closes.

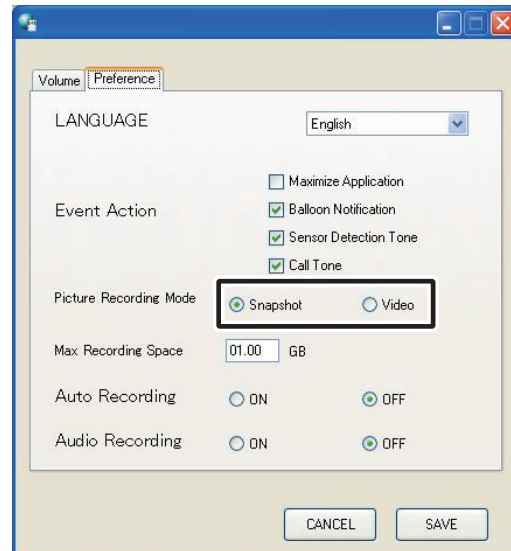
### Event Action Operation List

Setting	Description	Reference
Maximize Application	When there is a call from (one of) the door station(s), or when Sensor Detection occurs (even when minimized), the PC Application is automatically maximized.	
Balloon Notification	When there is a call from (one of) the door station(s), or when Sensor Detection occurs, a Balloon Notification appears.	P.47
Sensor Detection Tone	When a sensor connected to the IP Video Intercom Adaptor or master monitor station operates, the Sensor Detection Tone sounds.	P.47
Call Tone	When there is a call from (one of) the door station(s), the Call Tone sounds.	P.41 P.44

## Picture Recording Mode Settings

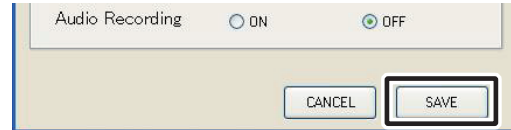
You can choose the image recording method from "Snapshot" which only records one image from the door station, or "Video" which continuously records images from the door station. The default setting is [Snapshot].

1. Click [Snapshot] or [Video] in Picture Recording Mode.



2. Click [SAVE].

- Saves the setting and closes PC application.



**MEMO** • Setting operations are canceled if you click [CANCEL], and the PC Application Settings window closes.  
 • You cannot make audio recordings when [Snapshot] is set.  
 • When [Video] is set, and the [Audio Recording Settings] P.40 is set to ON, manual video recording and audio recording are performed simultaneously. You cannot make audio recordings when Auto Recording is set.

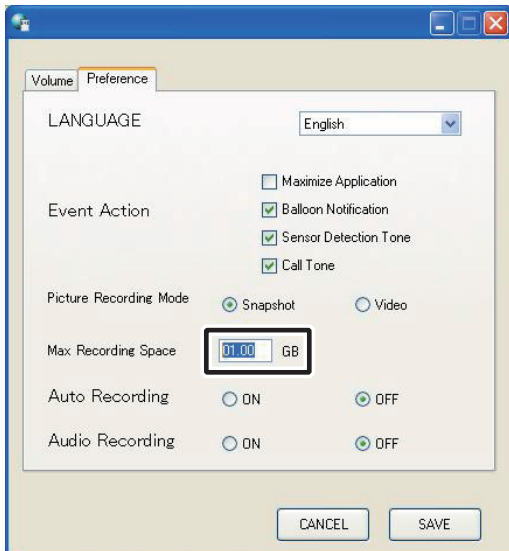
### Snapshot Recording and Video Recording Operation List

Setting	Description
Snapshot	Auto recording When there is a call from the door station, only one snapshot image of the entrance is recorded. A snapshot is also recorded for the second call.
	Manual recording During calls from the door station, when monitoring the door station, and when talking with the door station, you can manually record only one entrance image using snapshot.
Video	Auto recording When there is a call from the door station, the video recording of the entrance starts. If there is a call from another door station during video recording, the recording is stopped. Video recording stops when a call from the door station is answered. Video recording stops when the call from the door station ends, and you are returned to the standby screen.
	Manual recording During calls from the door station, when monitoring the door station, and when talking with the door station, you can make video recordings of the entrance manually. When communication starts during the video recording of monitoring, you can continue the recording. When the communication or the monitoring ends, video recording stops. When [Audio Recording Settings] P.40 is set to ON, audio recording can also be performed when manual video recording is performed, during monitoring of the door station, and when talking with the door station.

## Max Recording Space Settings

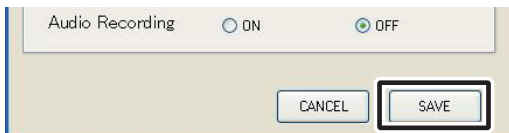
You can set the Max Recording Space for images to between "00.01" and "10.00" GB. The default setting is "01.00".

1. Enter a value between "00.01" and "10.00" as the Max Recording Space.



2. Click [SAVE].

• Saves the setting and closes PC application.

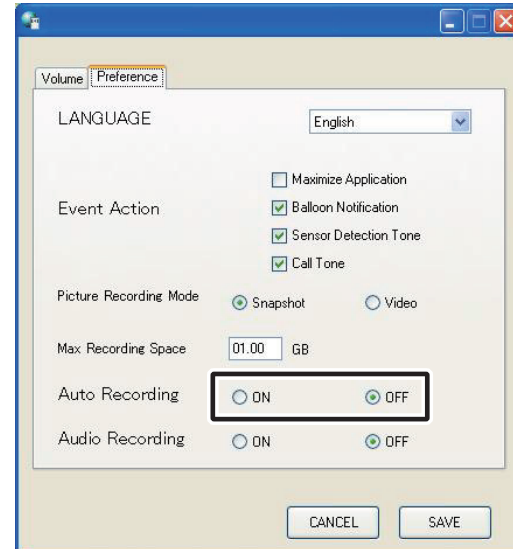


- MEMO**
- Setting operations are canceled if you click [CANCEL], and the PC Application Settings window closes.
  - You cannot record more than will fit in the free space on the computer.
  - You cannot record more than will fit in the set Max Recording Space. (Do not overwrite)

## Auto Recording Settings

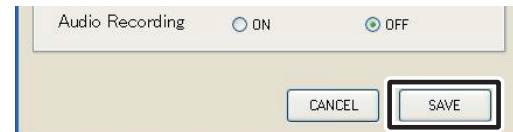
You can select whether or not to automatically record images of the door station when a call is received from the door station. The default setting is "OFF".

1. Click [ON] or [OFF] in Auto Recording.



2. Click [SAVE].

• Saves the setting and closes PC application.



- MEMO**
- Setting operations are canceled if you click [CANCEL], and the PC Application Settings window closes.

## Audio Recording Settings

You can select whether or not to make an audio recording during manual video recording. The default setting is "OFF" (No audio recording performed).

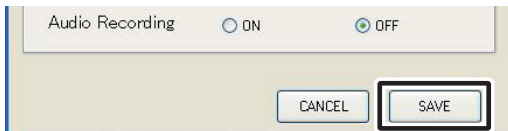
### 1. Click [ON] or [OFF] in Audio Recording.

- When performing Audio Recording, be sure to set Picture Recording Mode to [Video]. You cannot make audio recordings when [Snapshot] is set.



### 2. Click [SAVE].

- Saves the setting and closes PC application.



#### MEMO

- Setting operations are canceled if you click [CANCEL], and the PC Application Settings window closes.
- Even if Audio Recording is ON, recording will not start during auto video recording or when the machine is in calling mode (before beginning to talk).

# 4 PC Application Basic Operations

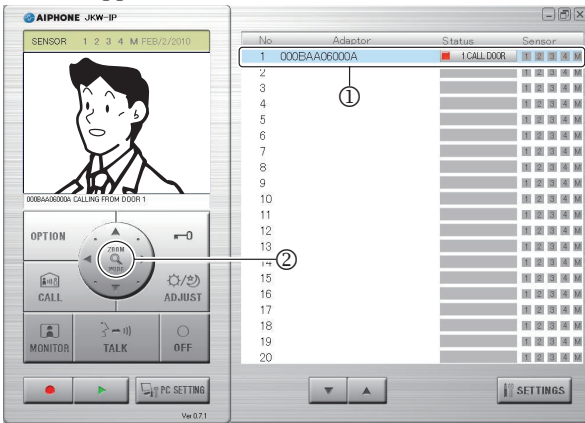
## 4-1 Video Intercom Functions

By using the PC Application, you can operate the following video intercom functions for the video intercom system and synchronized devices (electronic door lock and other connected devices, etc.) connected to the IP Video Intercom Adaptor.

Controllable Video Intercom Functions	Reference
Answering a call from the door station	<b>P.41</b>
Door release	<b>P.42</b>
Zoom/Wide, Pan & Tilt	<b>P.43</b>
Adjust image	<b>P.44</b>
Room-to-room communication (Communication with a master monitor station)	<b>P.44</b>
Entrance monitoring	<b>P.46</b>
Sensor Detection from Connected Equipment	<b>P.47</b>
Option Output from IP Video Intercom Adaptor	<b>P.47</b>
Balloon Notification	<b>P.47</b>

### 4-1-1 Answering a call from the door station

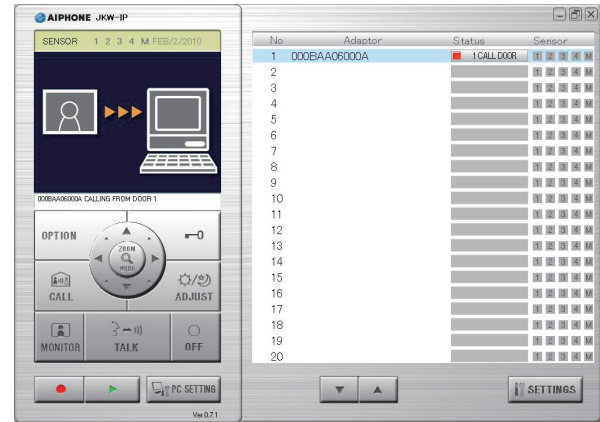
- When there is a call from the door station, a call tone sounds and the entranceway image is displayed on the PC Application screen.



Status:	(Red) 1 CALL DOOR (Numbers indicate the order of the calls)
MESSAGE:	<Adaptor Name> CALLING FROM DOOR <Door station No.>

- The corresponding "Adaptor" (the IP Video Intercom Adaptor connected to the calling door station) enters Selected status (①).
- In this status, you can switch the image display to Zoom screen/Wide screen by clicking the [ZOOM / WIDE] (②). For more information, see "Zoom/Wide, Pan & Tilt". **P.43**
- The screen is switched when "Zoom/Wide" or "Pan & Tilt" is operated from a master monitor station or another PC Application.
- When the call timer's set time (about 45 seconds) has elapsed, the PC Application returns to standby status. The PC Application also returns to standby status when the master monitor station answers a call from the door station.
- The communication time depends on the master monitor station settings.
- The Instant voice call function is not available in the PC Application.
- If the check mark is removed from Call Tone in "Event Action Settings" **P.38**, the call tone will not sound.

The screen for image acquisition is displayed until the image is displayed on the PC Application screen.



When the system is composed of multiple IP Video Intercom Adaptors, master monitor stations, door stations, and PCs.

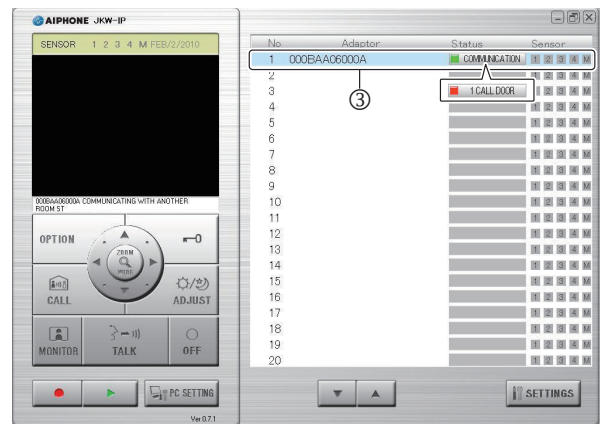
All PC Applications are called when there is a call from any of the door stations in the system.

**MEMO**

- When a master monitor station is communicating with the PC Application, and a call comes in from the door station of the master monitor station, only the PC Application currently active is called.
- When calling multiple PC Applications, the displayed image may be slowed down.
- When calling multiple PC Applications, the image displayed on the PC Application may be delayed, depending on the number of connections.

When the following processes occur one after another, "1 CALL DOOR" and "COMMUNICATION" are displayed alternately in the "Status" display section of the Expanded Window (③).

- When there is a call from the door station of the master monitor station while talking with the master monitor station.

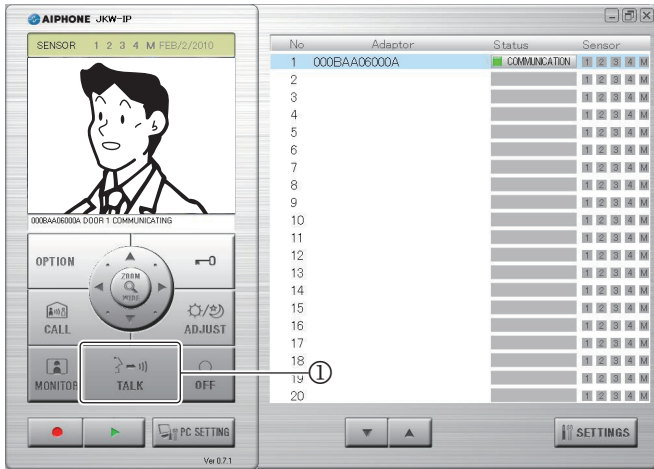


- When you click "OFF", the image from the calling door station is displayed, and you can click [TALK] to start the communication.

**MEMO**

- Even if the master monitor station does not have a recording function, you can record using the PC Application.

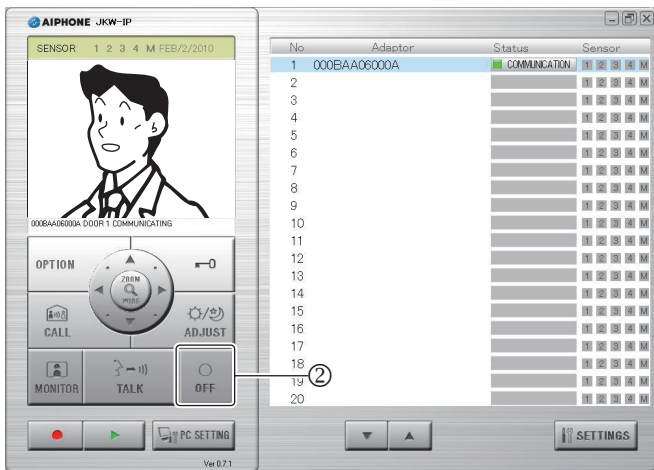
2. Click [TALK] (①), for a call from the door station.
  - You can click [TALK] (①) to communicate, even if the screen for image acquisition is displayed.



Status:	(Green) COMMUNICATION
MESSAGE:	<Adaptor Name> DOOR <Door station No.> COMMUNICATING

- You can communicate with the door station.
- Priority transmission  
While [TALK] is clicked and held during communication with the door station, transmissions from the computer take priority. If [TALK] is not clicked and held, it enters hands-free mode.

3. When the communication is complete, click [OFF] (②).

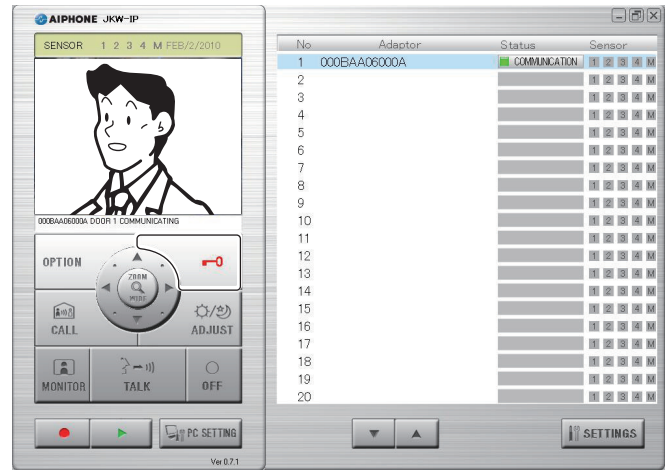


- The PC Application returns to standby status.

## 4-1-2 Door release

While being called from the door station, talking or monitoring, you can unlock the door from the PC Application by clicking [ (Door release) ] on the PC Application.

1. Click [ (Door release) ].
  - The door is unlocked while the button is clicked and held.
  - When unlocked, [ (Door release) ] turns red.
  - \* Depending on the communication delay, the timing of the button turning red and the actual door release may differ.



**MEMO** • To perform door release, you need to set the Encryption Key.



### 4-1-3 Zoom/Wide, Pan & Tilt

By using the following steps, the monitor screen of the PC Application can be switched between a wide picture and a zoom picture.

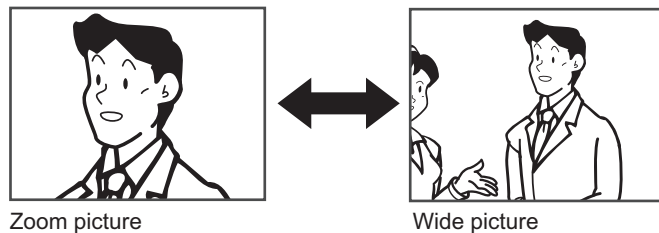
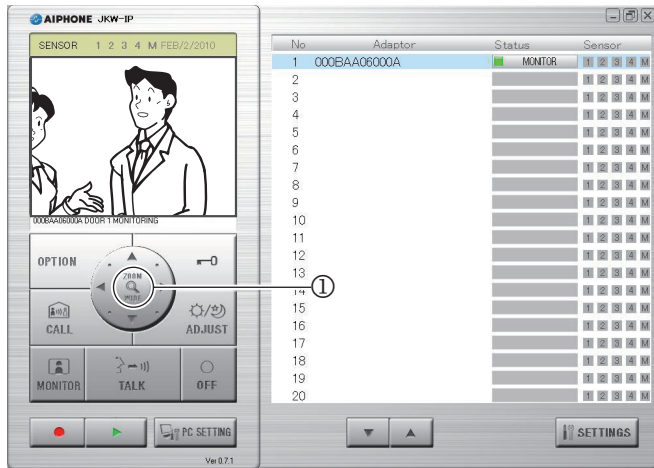
- Calling from the door station
- Entrance monitoring
- Communicating with the door station

By using Pan & Tilt when a zoom picture is displayed, a wide picture can be split into 9 images and displayed as 1 picture.

**MEMO** • If the door station is operated from another PC Application or a master monitor station at the same time as Zoom/Wide or Pan & Tilt, the master monitor station operation may not be enabled, due to communication overlap and control processing.

#### Zoom/Wide switching

1. Click [ZOOM / WIDE] (①) when the image is displayed on the PC Application screen.



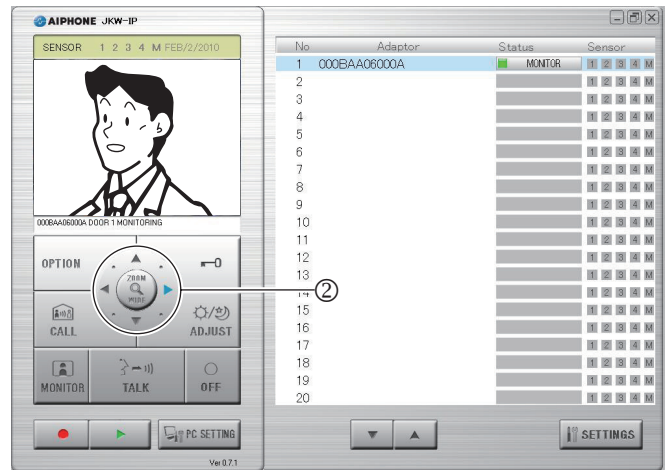
- The screen switches between the zoom picture and the wide picture each time you click [ZOOM / WIDE].

**MEMO** • If visitors are not displayed in the center of the screen during Zoom, click [Pan & tilt], and then move the screen.  
• When the screen switches from a wide picture to a zoom picture, the image from the position preset by the master monitor station is displayed.

⚠ Depending on the properties of the door station camera, the wide screen may appear more distorted than the zoom screen, but this is not a malfunction.

#### Pan & Tilt operation

1. Click the [Pan & tilt] (②) ▲▼◀▶ buttons while a zoom picture is displayed.



- The target image is displayed.
- You can move the image diagonally by clicking the [Pan & tilt] diagonal buttons.

#### Moving the image with the [Pan & tilt] button

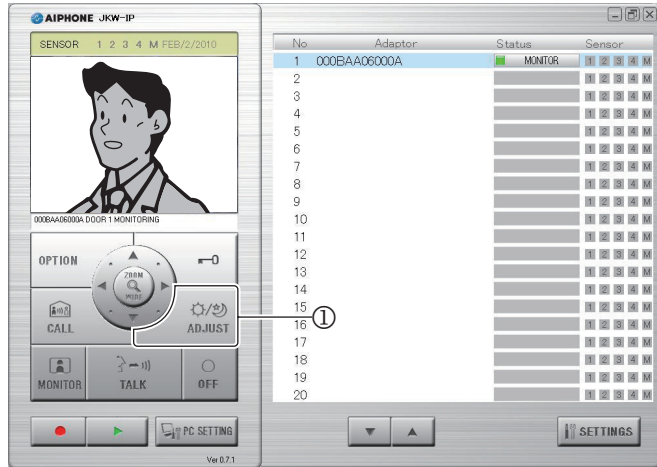


### 4-1-4 Adjust image

If the image displayed on the PC Application screen is difficult to see, you can adjust the image using [ADJUST] (①).

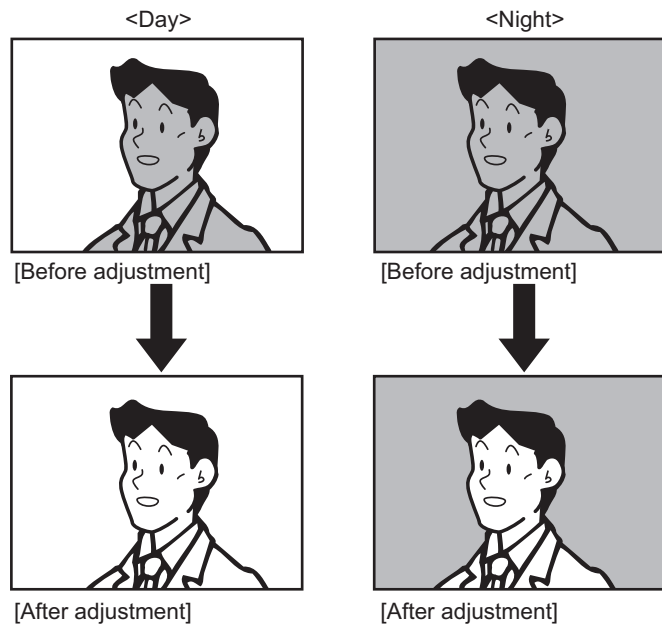
You can adjust the backlight during the day when a bright background makes it difficult to see.

You can make it brighter at night when it is darker.



• If you click [ADJUST] again while the image is being adjusted, the image is returned to the status from before adjustments were made.

#### Backlight adjustment, Night sensitivity adjustment image



**MEMO**

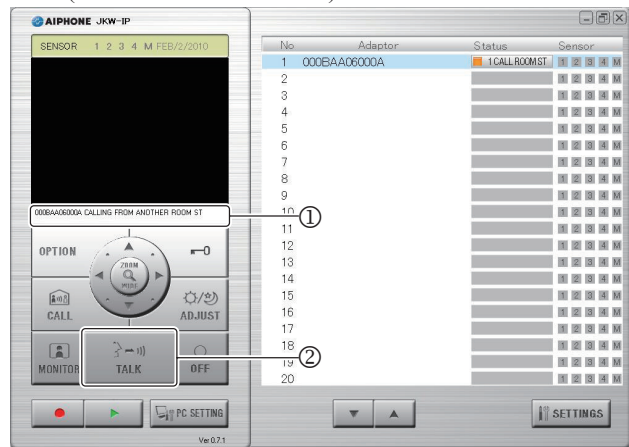
- If the door station is operated from another PC Application at the same time as Adjust image, the operation may not be enabled, due to communication overlap and control processing.
- Clicking [ADJUST] (①) at night may make visitors' faces easier to see, but may also make moving objects more difficult to see.
- The discrimination between day and night is performed automatically by the door station.

### 4-1-5 Room-to-room communication (Communication with a master monitor station)

Mutual calls and communication are possible between the PC Application and the master monitor station.

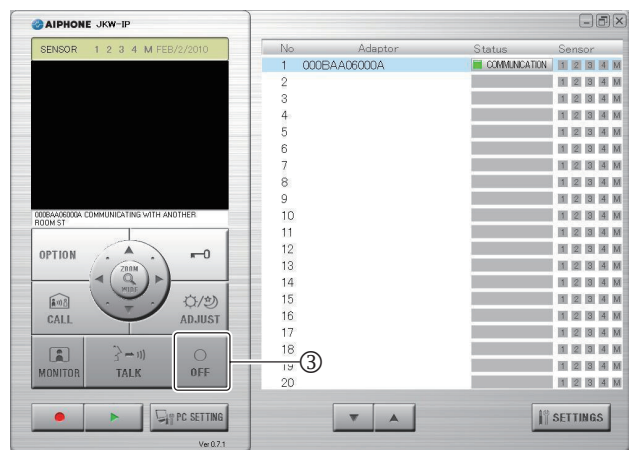
#### Receiving a call from / communicating with the master monitor station

1. A call tone sounds when there is a call from the master monitor station, and a message is displayed in the PC Application's [MESSAGE] display (①).
  - All PC Applications are called when there is a call from any of the master monitor stations in the system.
  - \*If the check mark is removed from Call Tone in "Event Action Settings" P.38, the call tone will not sound.
  - When the master monitor station ends room-to-room communication, the PC Application returns to standby status (this includes call timeouts).



Status:	■ (Orange) 1 CALL ROOM ST (Numbers indicate the order of the calls)
MESSAGE:	<Adaptor Name> CALLING FROM ANOTHER ROOM ST

2. When this happens, click [TALK] (②).
  - You can then talk to the master monitor station.
3. To end the communication, click [OFF] (③).



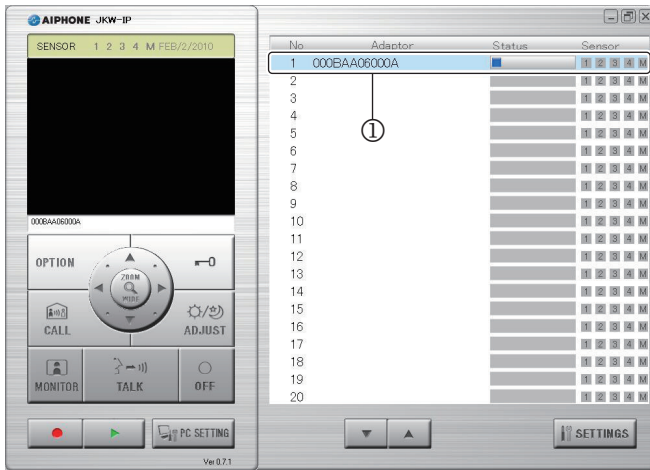
• The PC Application returns to standby status.



### Calling / communicating with the master monitor station

If you want to call a master monitor station from the PC Application, you can choose to call all master monitor stations in the system, or call one specific master monitor station.

1. From the "Adaptor" display (①) in the Expanded Window, select the master monitor station-connected IP Video Intercom Adaptor you want to call.

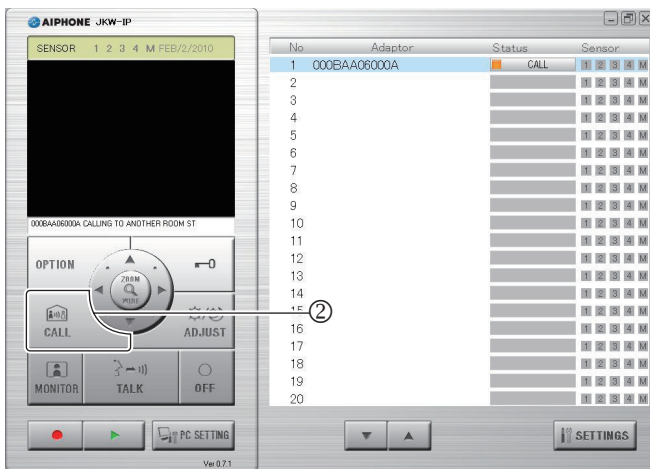


- When calling all master monitor stations in the system, do not select any Adaptors. If an Adaptor is selected, you can release it by clicking it again.

**MEMO** • You cannot select specific multiple Adaptors. You can select "One Adaptor" or "All Adaptors".

2. Click [CALL] (②).

- You can choose to call the master monitor station connected to the IP Video Intercom Adaptor that you selected, or call all master monitor stations.



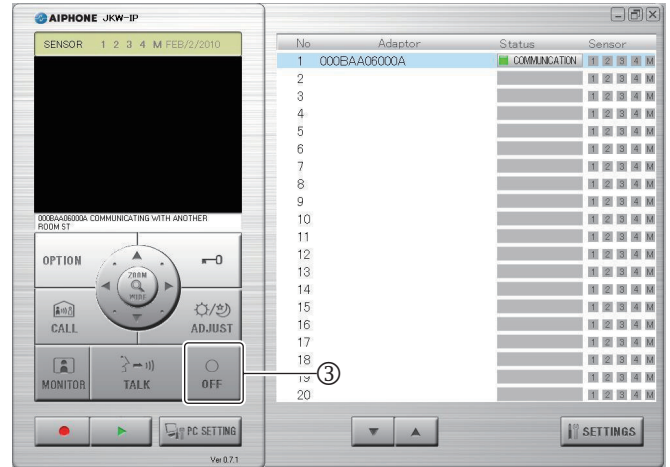
Status :	(Orange) CALL
MESSAGE :	<Adaptor Name> CALLING TO ANOTHER ROOM ST

- When you call all the master monitor stations, "CALLING TO ANOTHER ROOM ST" is displayed.

3. You can communicate when a master monitor station starts the communication.

- When you are calling all the master monitor stations, communicate with the master monitor station which starts the communication first. The other master monitor stations enter standby mode.

4. To end the communication, click [OFF] (③).

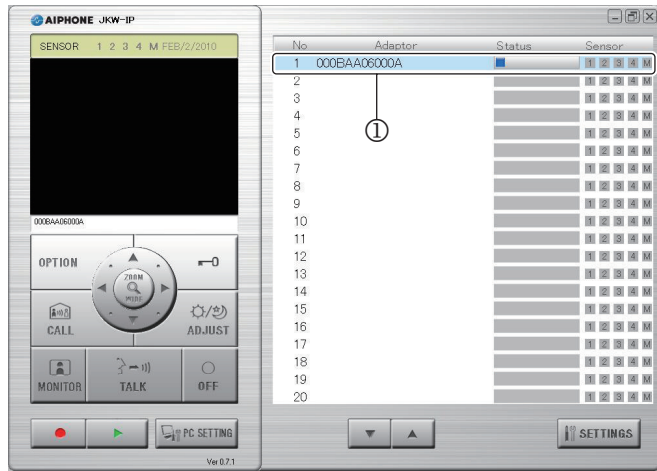


- The PC Application returns to standby status.
- The master monitor station cannot perform an OFF operation to finish calls from the PC Application.

### 4-1-6 Entrance monitoring

You can monitor a door station from the PC Application.

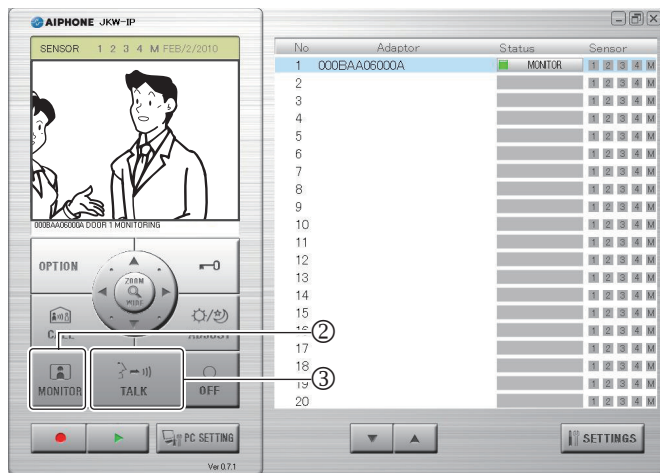
1. From the "Adaptor" display (①) in the Expanded Window, select one door station-connected IP Video Intercom Adaptor you want to monitor.



- If an Adaptor is selected, you can release it by clicking it again.

**MEMO** • You can only select one Adaptor to monitor the door station.

2. Click [MONITOR] (②).



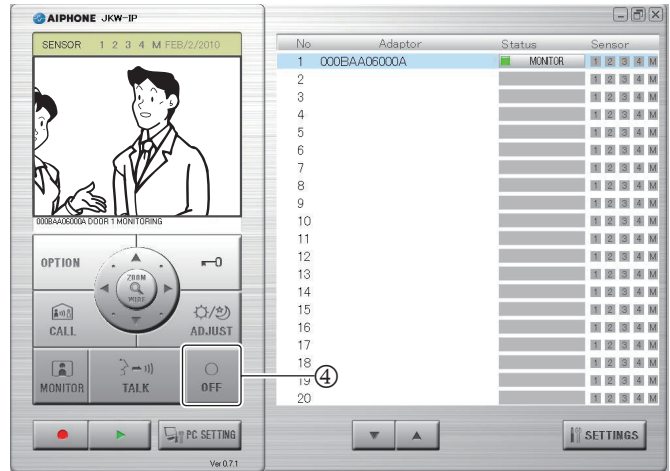
Status :	(Green) MONITOR
MESSAGE :	<Adaptor Name> DOOR <Door station No.> MONITORING

- The image from the door station connected to the selected Adaptor is displayed, and audio is received.
- While monitoring, click [TALK] (③) to begin talking. At night, the door station's LED for night illumination lights.
- The discrimination between day and night is performed automatically by the door station.

**MEMO**

- The entrance monitoring turns off automatically after approximately 1 minute. To monitor the entrance again, repeat from 1.
- During entrance monitoring, the entrance monitoring time can be extended by approximately 1 minute by clicking [MONITOR] again.
- During entrance monitoring, the screen is set to the wide screen display. It switches to the zoom screen when the [ZOOM / WIDE] button is clicked.
- At night, the door station's LED for night illumination does not light until [TALK] (③) is clicked.

3. To finish monitoring, click [OFF] (④).

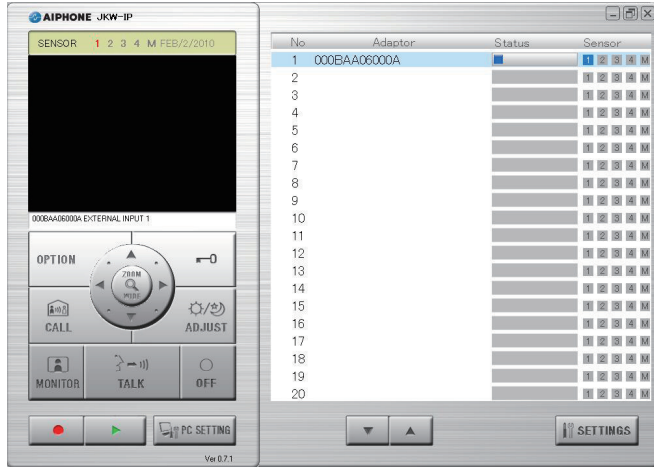


- The PC Application returns to standby status.
- When the monitor display time has elapsed, the monitoring is automatically switched off, and it returns to standby status.

### 4-1-7 Sensor Detection from Connected Equipment

You will be notified by the PC Application if sensors connected to the master monitor station and IP Video Intercom Adaptor are activated.

1. If a sensor detects an abnormality, or the connected call button etc. is pressed, the Sensor Detection Tone occurs.



MESSAGE : <Adaptor Name> EXTERNAL INPUT  
or  
<Adaptor Name> EXTERNAL INPUT <No.>

2. Click [OFF].
  - The Sensor Detection Tone stops.
  - The Sensor Detection Tone can also be stopped in the following situations.

#### Sensor Detection Tone Recovery

External (Sensor) input	Description
IP Video Intercom Adaptor external input	After 30 seconds, it stops automatically.
Master monitor station external input	Stopped by the master monitor station. After 30 seconds, it stops automatically.

- \*If the check mark is removed from Sensor Detection Tone in "Event Action Settings" **P.38**, the Sensor Detection Tone will not occur.
- If sensors are activated during communication, the Sensor Detection Tone will not occur.

### 4-1-8 Option Output from IP Video Intercom Adaptor

You can operate equipment connected to the IP Video Intercom Adaptor from the PC Application.

1. Click [OPTION].

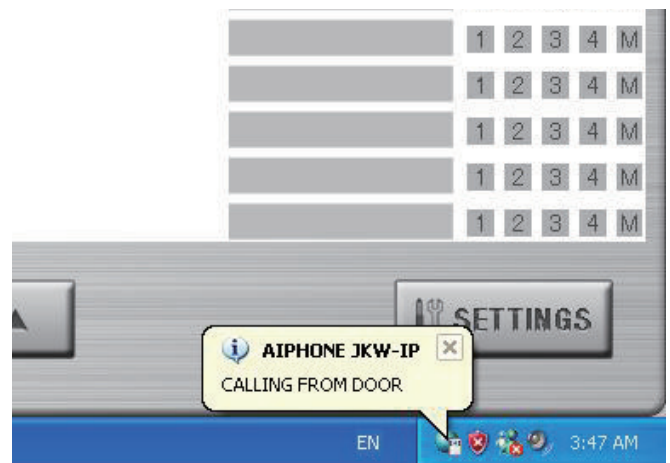
**MEMO**

- The [OPTION] button turns green while being operated.
- To perform option output operations, you need to set the Encryption Key.

\*Depending on the communication delay, the timing of the button turning green and the actual control timing may differ.

### 4-1-9 Balloon Notification

When an event occurs, a balloon notification is displayed on the PC screen.



#### Balloon Notification Content

Notification	Event Content
CALLING FROM DOOR	Indicates a call from a door station.
CALLING FROM ROOM ST	Indicates a call from a master monitor station.
EXTERNAL INPUT	Indicates external input detection.
CANNOT RECORD. SPACE IS FULL.	Displayed when there is not enough free space on the hard disk drive.

**MEMO**

- If there is not enough free space on the hard disk drive during a door call, the message "CANNOT RECORD. SPACE IS FULL." is displayed.
- The balloon notification disappears automatically when the computer is operated. The balloon notification also disappears if you click it while it is displayed.
- See "Event Action Settings" for Balloon Notification settings. **P.38**

## 4-2 Recording Function

The PC Application can record images from the video intercom system connected to the IP Video Intercom Adaptor automatically or manually.

### 4-2-1 Auto Recording

When a call is received from the door station, the entranceway images are recorded automatically.

If there is a call from another door station during communication, the image displayed on the PC Application is automatically recorded after the communication ends.

When communication with the door station starts, Auto Recording stops. Auto Recording also stops when the call from the door station ends, and you are returned to the standby screen.

See "Auto Recording Settings" for more information on automatic recording. [P.39](#)

**MEMO** • When Auto Recording is set and the call from the door station ends, recording stops.

### Snapshot recording when Auto Recording is set

One snapshot image of the entrance is recorded when the following condition is met.

- When the call button at the door station is pressed

See "Picture Recording Mode Settings" for more information on snapshot images. [P.38](#)

**MEMO** • A snapshot can also be recorded for the second call from the door station.  
 • If there is a call from a door station during communication, a snapshot of the image displayed on the PC Application is automatically recorded after the communication ends.

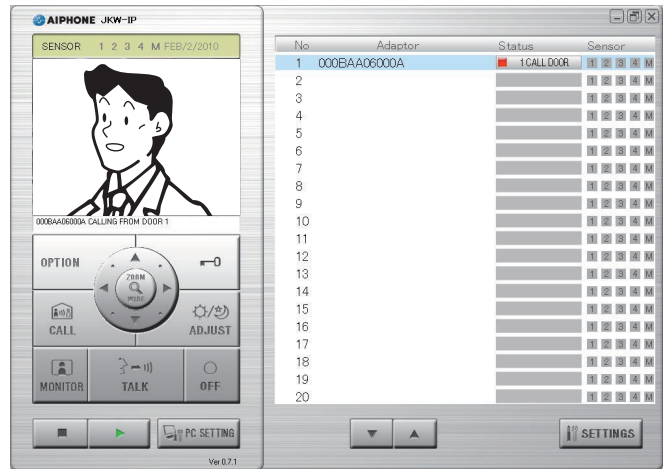
### Video recording when Auto Recording is set

A video recording of the entrance is made when the following condition is met.

- When the call button at the door station is pressed

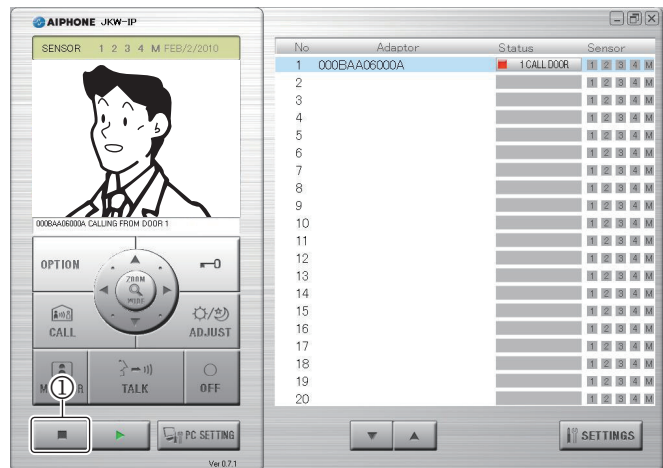
See "Picture Recording Mode Settings" for more information on video recording settings. [P.38](#)

1. Once the above operation has been performed, video recording starts for the image displayed on the PC Application screen.



- If there is a call from another door station during video recording, video recording is stopped.

2. If you want to stop video recording, click [■(Stop)] (①).



- Video recording stops when a call from the door station is answered.
- Video recording stops when the call ends, and you are returned to the standby screen.



## 4-2-2 Manual recording

You can make a snapshot recording or video recording of the entrance when the following conditions are met.

- Calling from the door station
- Entrance monitoring
- Communicating with the door station

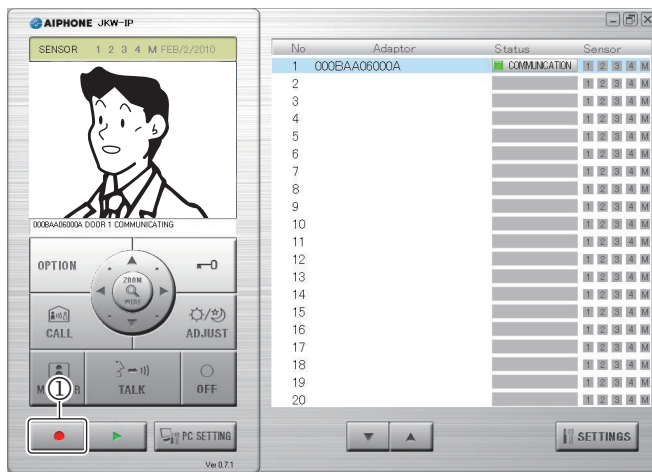
### Snapshot recording

You can only record one snapshot image of the entrance manually when the following conditions are met.

- Calling from the door station
- Entrance monitoring
- Communicating with the door station

See "Picture Recording Mode Settings" for more information on snapshot recording. **P.38**

1. Click [●(Rec)] (①), while communicating with the door station.



- Only one snapshot of the image displayed on the PC Application screen is recorded.

### Video recording

You can make a video recording of the entrance manually when the following conditions are met.

- Calling from the door station
- Entrance monitoring
- Communicating with the door station

When communication starts during the video recording of monitoring, you can continue recording.

When the communication or monitoring ends, video recording stops.

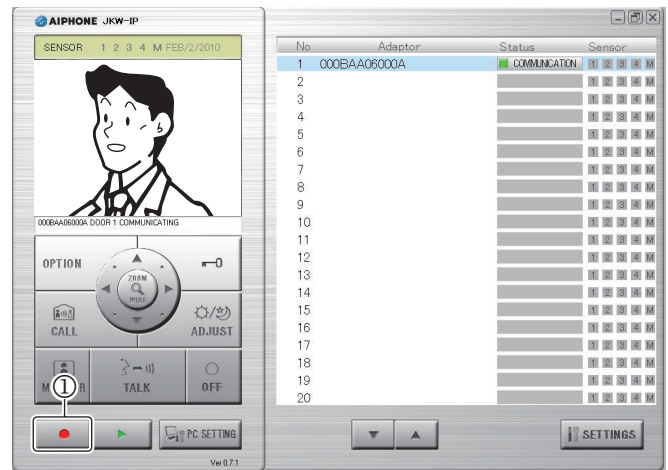
See "Picture Recording Mode Settings" for more information on video recording settings. **P.38**

If Audio Recording is set, you can make video and audio recordings simultaneously when the following conditions are met.

- Entrance monitoring
- Communicating with the door station

See "Audio Recording Settings" for more information on audio recording settings. **P.40**

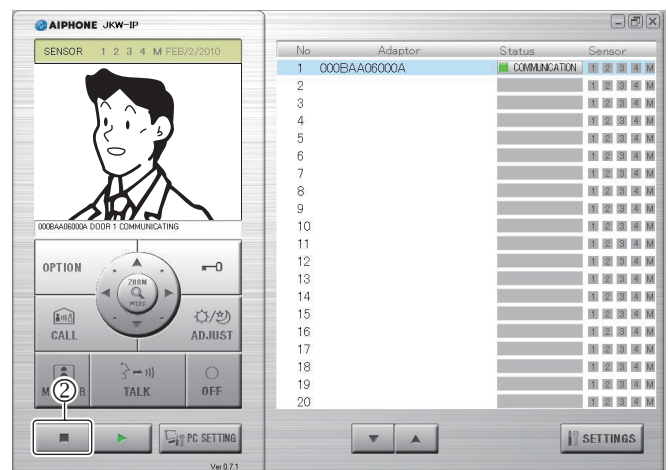
1. Click [●(Rec)] (①), while communicating with the door station.



- Starts video recording the image displayed on the PC Application screen.
- If you are video recording while receiving a call from a door station, and there is a call from another door station, video recording is stopped.

**MEMO** • When you click [TALK] while recording the monitoring, recording continues until the set Communication time has elapsed or until [OFF] is clicked.

2. To stop video recording, click [■(Stop)] (②).



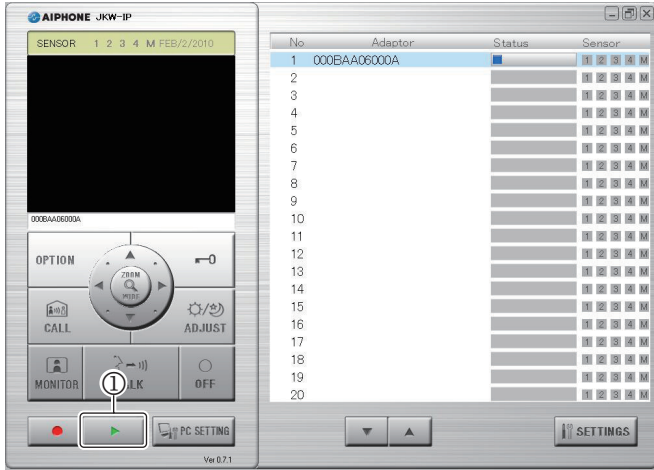
- When the door station's monitoring time has elapsed, video recording is stopped.
- Video recording stops when communication with the door station ends.

## 4-3 Playback Function

In the PC Application, you can play back, stop, pause, slow down the playback, and fast forward the recorded images. You can delete any unnecessary recorded files.

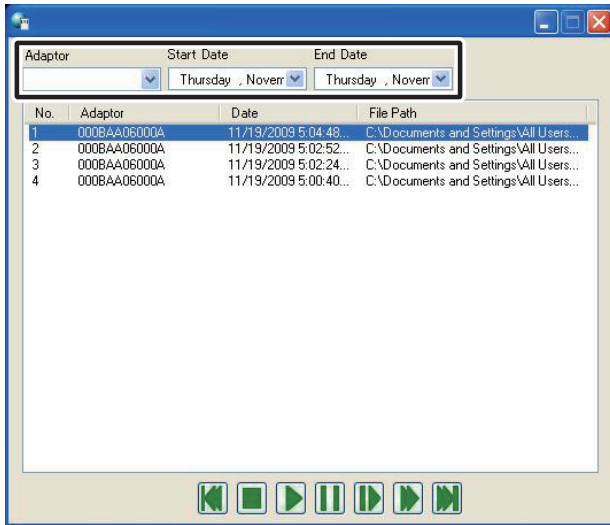
### 4-3-1 Play recorded image

1. Click [▶(Open play window)] (①) in the Standard Window.



- The recorded file list is displayed.

2. Enter the target Adaptor and the recording period (Start Date/End Date).












- A list of recorded files corresponding to the search conditions is displayed.
- Dates in the recorded file list are displayed in reverse chronological order.
- You can display the data in the recorded file list in order of Adaptor name or date by clicking either "Adaptor" or "Date".
- The name entered under Network Settings in Administrator Settings is displayed as the Adaptor.

3. Select a recorded file.

4. Select a playback operation.


- The snapshot or video is displayed on the PC Application screen. If audio has been recorded for the video, the audio is also played back.
- If you click another recorded file during playback, playback of the recorded file stops.
- If a call is received from a door station or another room station during playback, playback of the recorded file stops.

### Playback Operations List

Button Name	Description
 (Play)	<p>The selected recorded file is played back at normal speed.</p> <ul style="list-style-type: none"> <li>• When playback reaches the end of the recorded file, the file directly below the recorded file is automatically played back.</li> <li>• When playback ends for the final recorded file in the list, the last frame of the last file is displayed as a paused screen.</li> <li>• Under normal playback conditions, one snapshot recorded image is usually displayed for 2 seconds.</li> <li>• If you click  during fast forward or slow playback, it returns to normal playback speed.</li> </ul>
 (Stop)	<p>Stops playback of recorded files.</p> <ul style="list-style-type: none"> <li>• When the playback of a recorded file is stopped, no image is displayed on the screen.</li> </ul>
 (Pause)	<p>Pauses the recorded file currently being played back.</p> <ul style="list-style-type: none"> <li>• While paused, clicking  again moves the recorded images along one frame at a time.</li> <li>• When the playback of the final frame of a recorded file is paused, and you click  again, the first frame of the recorded file directly below the current file is displayed.</li> </ul>
 (Slow)	<p>The recorded file is played back at about one quarter of the normal speed.</p>
 (Fast Forward)	<p>The recorded file is played back at about four times the normal speed.</p>
 (Prior File)	<ul style="list-style-type: none"> <li>• During normal playback Replays the recorded file currently being played back from the beginning.</li> <li>• During Stop The recorded file one line above the currently selected file is selected.</li> <li>• During Pause The first frame of the recorded file currently being paused is displayed. If the first frame of the recorded file is paused, then the first frame of the recorded file directly above the current file is displayed.</li> <li>• During Slow Replays the recorded file currently being played back in slow motion from the beginning.</li> <li>• During Fast Forward Replays the recorded file currently being played back in fast forward from the beginning.</li> </ul>

Continued on the next page

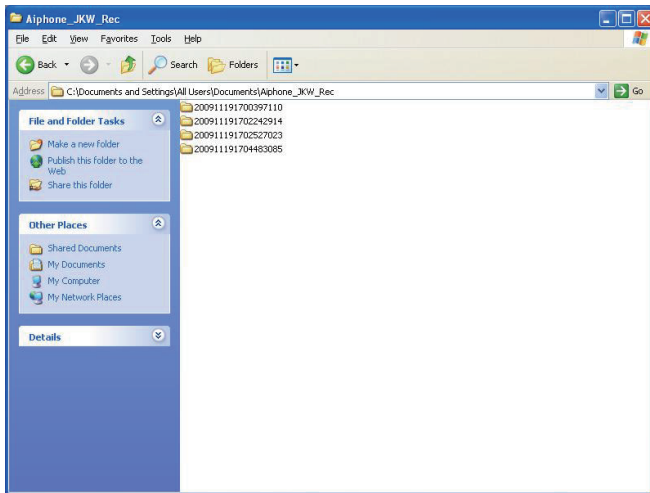


Button Name	Description
 (Next File)	<ul style="list-style-type: none"> <li>• During normal playback The recorded file directly below the file currently being played is played back.</li> <li>• During Stop The recorded file one line below the currently selected file is selected.</li> <li>• During Pause The first frame in the recorded file directly below the file currently being paused is displayed. If the first frame of the recorded file is paused, then the first frame of the recorded file directly below the current file is displayed.</li> <li>• During Slow The recorded file directly below the file currently playing is played back in slow motion from the beginning.</li> <li>• During Fast Forward The recorded file directly below the file currently playing is played back in fast forward from the beginning.</li> </ul>

### 4-3-2 Deleting a Recorded File

You can delete any unnecessary recorded files.

1. Open Aiphone\_JKW\_Rec.
  - If you selected a different directory during installation, please open the appropriate directory.



- The folder name is the date of recording.

3. Select a recorded file.
4. Right-click and select Delete.
  - The recorded file is deleted.

## 4-4 Sending Email

You can have Emails sent to the computer, PDA, or cell phone whenever a door call, sensor detection, or system start up occurs.

**!** To send Email from the IP Video Intercom Adaptor, you first need to setup a valid Email address and Email server.

See "Email Setting (Adaptor)" in Administrator Settings **P.20** and "Email Setting" in User Settings **P.33** for more information on Email settings.

### Content of transmitted Email

Timing	Title	Text
When there is a call from the door station	<Adaptor Name>	<Adaptor Name> CALLING FROM DOOR <Door station No.>
When the master monitor station detects External (Sensor) input	<Adaptor Name>	<Adaptor Name> EXTERNAL INPUT
When JKW-IP detects External (Sensor) input	<Adaptor Name>	<Adaptor Name> EXTERNAL INPUT <No.>
When the system starts up	<Adaptor Name>	<Adaptor Name> SYSTEM START

### MEMO

- The mail title and text cannot be changed.
- The above-mentioned events which have occurred in the previous 60 seconds are summarized and sent in the Email.
- A snapshot (QVGA JPEG) is attached to an Email when a door call occurs.

# 5 Others

## Settings List

Setting Contents		Setting Range	Default	Setting Authority	Saved Settings Location
Administrator Registration	Administrator ID	Up to 16 single-byte alphanumeric characters	aiphone	Administrator	JKW-IP
	Administrator Password	Up to 16 single-byte alphanumeric characters	aiphone	Administrator	JKW-IP
User Registration	User ID	Up to 16 single-byte alphanumeric characters	—	Administrator	JKW-IP
	User Password	Up to 16 single-byte alphanumeric characters	—	Administrator	JKW-IP
Network Settings (Adaptor)	Adaptor Name	Up to 24 single-byte alphanumeric characters and symbols <sup>*1</sup>	MAC Address	Administrator	JKW-IP
	Connection	Manually or by DHCP	Manually	Administrator	JKW-IP
	IP Address	Each field 0 to 255 (decimal)	192.168.0.30	Administrator	JKW-IP
	Subnet Mask	Each field 0 to 255 (decimal)	255.255.255.0	Administrator	JKW-IP
	Default Gateway	Each field 0 to 255 (decimal)	192.168.0.30	Administrator	JKW-IP
	Primary DNS Server	Each field 0 to 255 (decimal)	—	Administrator	JKW-IP
	Secondary DNS Server	Each field 0 to 255 (decimal)	—	Administrator	JKW-IP
	MAC Address	—	—	—	JKW-IP
	Web Port	443-64999	443	Administrator	JKW-IP
	Connection Port	1024-64999	5060	Administrator	JKW-IP
	Connection Password	Up to 8 single-byte alphanumeric characters	aiphone	Administrator	JKW-IP
	Audio Port	65000-65199	65002	Administrator	JKW-IP
	Video Port	65200-65399	65202	Administrator	JKW-IP
	Update Encryption Key File	—	—	Administrator	JKW-IP
Email Setting (Adaptor)	Adaptor Email Address	Up to 180 single-byte alphanumeric characters and symbols <sup>*2</sup>	—	Administrator	JKW-IP
	SMTP Server	Up to 64 single-byte alphanumeric characters and symbols <sup>*3</sup>	—	Administrator	JKW-IP
	(Email) login ID	Up to 180 single-byte alphanumeric characters and symbols <sup>*2</sup>	—	Administrator	JKW-IP
	SMTP Password	Up to 64 single-byte alphanumeric characters	—	Administrator	JKW-IP
	SMTP Server Port	1-65535	465	Administrator	JKW-IP
Adaptor Language Settings	Adaptor Language	English, French, Spanish, German, Dutch, Italian, Japanese	English	Administrator	JKW-IP
Video Setting	Resolution	—	QVGA (320x240)	Administrator	JKW-IP
	Frame Rate	1, 5, 10, 15 fps	15 fps	Administrator	JKW-IP
	Quality	1 (Low) to 10 (High)	10	Administrator	JKW-IP
Sensor input Settings	Sensor input	N.C. or N.O.	N.O.	Administrator	JKW-IP
Option output Settings	Option output	—	N.O.	Administrator	JKW-IP
	Output Duration	0 to 600 seconds, Output when clicked if 0 is set.	3 seconds	Administrator	JKW-IP
LANGUAGE Settings (PC Application)	PC Application LANGUAGE Settings	English, French, Spanish, German, Dutch, Italian, Japanese	English	User	PC
Event Action Settings	Maximize Application	ON or OFF	OFF	User	PC
	Balloon Notification	ON or OFF	ON	User	PC
	Sensor Detection Tone	ON or OFF	ON	User	PC
	Call Tone	ON or OFF	ON	User	PC
Picture Recording Mode Settings	Picture Recording Mode	Snapshot or Video	Snapshot	User	PC
Max Recording Space Settings	Max Recording Space	00.01 to 10.00 GB	01.00 GB	User	PC
Auto Recording Settings	When there is a call from a door station, Auto Recording	ON or OFF	OFF	User	PC
Audio Recording Settings	When Manual & Video Recording, Audio Recording	ON or OFF	OFF	User	PC
Email (Notification) Settings	(Target) Email Address	—	—	User	JKW-IP
	Transmit Email when there is a call from the Door station	ON or OFF	OFF	User	JKW-IP
	Transmit Email when Sensor input is detected	ON or OFF	OFF	User	JKW-IP
	Transmit Email when the system is started up	ON or OFF	OFF	User	JKW-IP
Volume Settings	Microphone Volume	Synchronized with PC settings for Low to High	—	User	PC
	Speaker Volume	Synchronized with PC settings for Low to High	—	User	PC
	Tone Volume	Low to High	Medium	User	PC
Network Settings (PC Application)	Web Port	443-64999	443	User	PC
	Connection Port	0-65535	10000	User	PC
	Audio Port	0-65535	20002	User	PC
	Video Port	0-65535	30002	User	PC

**\*1 Supported symbols**

! # \$ % & ' \* + - / ? ^ \_ ` { | } ~ ( ) < > [ ] ; @ .

**\*2 Supported symbols**

! # \$ % & ' \* + - / = ? ^ \_ ` { | } ~ ( ) < > [ ] : ; , @ .

**\*3 Supported symbols**

! # \$ % & ' \* + - / = ? ^ \_ ` { | } ~ .

**Operation Status Comment List**

A list of comments displayed in the PC Application.








**Operation Status Comment List**

NAMES	Display Text	Notes
Select Adaptor	<Adaptor Name>	The selected Adaptor Name is displayed.
Calling from door station	<Adaptor Name> CALLING FROM DOOR <Door station No.>	Adaptor Name and Door No. are displayed
Communication with a door station	<Adaptor Name> DOOR <Door station No.> COMMUNICATING	Adaptor Name and Door No. are displayed
Entrance monitoring	<Adaptor Name> DOOR <Door station No.> MONITORING	Adaptor Name and Door No. are displayed
Calling to the room stations	CALLING TO ANOTHER ROOM ST	
Calling from another room station	<Adaptor Name> CALLING FROM ANOTHER ROOM ST	Adaptor Name is displayed
Room-to-room communication	<Adaptor Name> COMMUNICATING WITH ANOTHER ROOM ST	Adaptor Name is displayed
Master Station External (Sensor) Input	<Adaptor Name> EXTERNAL INPUT	Adaptor Name is displayed
Adaptor External (Sensor) Input	<Adaptor Name> EXTERNAL INPUT <No.>	Adaptor Name is displayed
Individual calling to another room station	<Adaptor Name> CALLING TO ANOTHER ROOM ST	Adaptor Name is displayed
In use	<Adaptor Name> SYSTEM IS IN USE	Adaptor Name is displayed

**"Status" list**

A "Status" list displayed in the PC Application's Expanded Window.

**"Status" list**

Color	Comment	Description
 Red	1 CALL DOOR	Displayed when there is a call from the door station Numbers indicate the order of the calls
 Green	COMMUNICATION	Displayed during communication
 Green	MONITOR	Displayed during monitoring
 Orange	1 CALL ROOM ST	Displayed when there is a call from the master monitor station Numbers indicate the order of the calls
 Orange	CALL	Displayed when there is a call from the PC Application
 Gray	<No display>	Encryption key not acquired (During standby)
 Blue	<No display>	Displayed during stand by

## Technical Precautions

- Cleaning: Clean the units with a soft cloth dampened with a neutral household cleanser. Do not use an abrasive cleanser or cloth.
- If you are experiencing difficulties with the device such as "Settings not working well", please check our homepage at <http://www.aiphone.net/>.

# Specifications


Item		Description
Power		DC18 V
Current consumption		Standby 110 mA, Maximum 200 mA
Communication		Hands-free / Priority transmission
Image Format		JPEG
Image Resolution		320×240 (QVGA)
Network	Interface	10BASE-T/100BASE-TX Ethernet
	Protocol	TCP/IP, UDP/IP, SIP
Environment	Bandwidth	320 K to 8 Mbps (per IP Video Intercom Adaptor)
	Operating Temperature	0 ° C to 40 ° C (+32 ° F to +104 ° F)
Dimensions		200 (H)×150 (W)×35.5 (D) mm 7-7/8 (H) x 5-15/16(W) x 1-7/16 (inches)
Weight		Main Unit: Approx. 370 g (0.82 lbs)
Color		White

The PC Application is protected by intellectual property rights owned by International Systems Research Co. It is expressly forbidden to remove, use, or distribute any or all of the parts of the PC Application's component software without first obtaining the necessary license from International Systems Research Co.

# Warranty

Aiphone warrants that its products have no material or workmanship defects under normal use conditions for two years after delivery to the end user. Aiphone will perform repair or replacement free of charge if the product is defective and the warranty applies to the defect. Aiphone reserves unto itself the sole right to make the final decision whether there is a defect in materials and/or workmanship and whether or not the product is under warranty. This warranty shall not apply to any Aiphone product which has been subject to misuse, neglect, accident, or to use in violation of instructions furnished, nor extended to units which have been repaired or altered outside of the factory. This warranty does not cover batteries or damage caused by batteries used in connection with the unit. This warranty only includes carry-in repairs. Any repairs must be made at the shop or place designated in writing by Aiphone. Aiphone will not be responsible for any costs incurred during on-site service calls. Aiphone will not provide compensation for any loss or damage incurred by the breakdown or malfunction of its products during use, or for any consequent inconvenience or losses that may result.

---

The object area of  is the EU.

This equipment has been tested and found to comply with the limits for a Class B digital device, pursuant to Part 15 of the FCC Rules. These limits are designed to provide reasonable protection against harmful interference in a residential installation. This equipment generates, uses, and can radiate radio frequency energy, and if not installed and used in accordance with the instructions, may cause harmful interference to radio communications. However, there is no guarantee that interference will not occur in a particular installation. If this equipment does cause harmful interference to radio or television reception, which can be determined by turning the equipment off and on, the user is encouraged to try to correct the interference by one or more of the following measures:

- Reorient or relocate the receiving antenna
- Connect the equipment to an outlet on a circuit different from that to which the receiver is connected. Increase the separation between the equipment and receiver.
- Consult the dealer or an experienced radio/TV technician for help.



*Providing Peace of Mind*

<http://www.aiphone.net/>